

**CEBPD Antibody (C-term)**  
**Affinity Purified Rabbit Polyclonal Antibody (Pab)**  
**Catalog # AP12648b**

**Specification**

---

**CEBPD Antibody (C-term) - Product Information**

Application	<b>WB,E</b>
Primary Accession	<a href="#">P49716</a>
Other Accession	<a href="#">Q03484</a> , <a href="#">Q00322</a> , <a href="#">Q02756</a> , <a href="#">NP_005186.2</a> , <a href="#">Q9N0J3</a>
Reactivity	<b>Human</b>
Predicted	<b>Bovine, Mouse, Rat, Sheep</b>
Host	<b>Rabbit</b>
Clonality	<b>Polyclonal</b>
Isotype	<b>Rabbit IgG</b>
Antigen Region	<b>169-197</b>

**CEBPD Antibody (C-term) - Additional Information**

**Gene ID** 1052

**Other Names**

CCAAT/enhancer-binding protein delta, C/EBP delta, Nuclear factor NF-IL6-beta, NF-IL6-beta, CEBPD

**Target/Specificity**

This CEBPD antibody is generated from rabbits immunized with a KLH conjugated synthetic peptide between 169-197 amino acids from the C-terminal region of human CEBPD.

**Dilution**

WB~~1:1000

**Format**

Purified polyclonal antibody supplied in PBS with 0.09% (W/V) sodium azide. This antibody is purified through a protein A column, followed by peptide affinity purification.

**Storage**

Maintain refrigerated at 2-8°C for up to 2 weeks. For long term storage store at -20°C in small aliquots to prevent freeze-thaw cycles.

**Precautions**

CEBPD Antibody (C-term) is for research use only and not for use in diagnostic or therapeutic procedures.

**CEBPD Antibody (C-term) - Protein Information**

**Name** CEBPD

**Function** Transcription activator that recognizes two different DNA motifs: the CCAAT homology common to many promoters and the enhanced core homology common to many enhancers (PubMed:[16397300](#)). Important transcription factor regulating the expression of genes involved in immune and inflammatory responses (PubMed:[16397300](#), PubMed:[1741402](#)). Transcriptional activator that enhances IL6 transcription alone and as heterodimer with CEBPB (PubMed:[1741402](#)).

#### Cellular Location

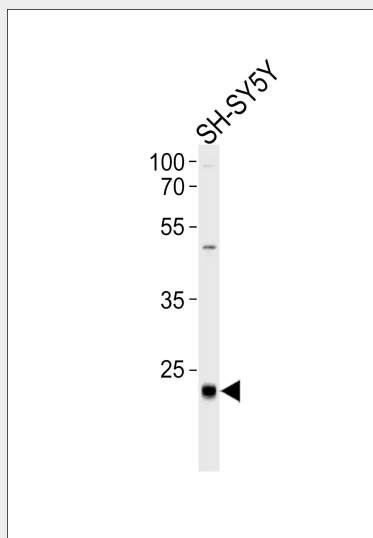
Nucleus.

#### CEBPD Antibody (C-term) - Protocols

Provided below are standard protocols that you may find useful for product applications.

- [Western Blot](#)
- [Blocking Peptides](#)
- [Dot Blot](#)
- [Immunohistochemistry](#)
- [Immunofluorescence](#)
- [Immunoprecipitation](#)
- [Flow Cytometry](#)
- [Cell Culture](#)

#### CEBPD Antibody (C-term) - Images



CEBPD Antibody (C-term) (Cat. #AP12648b) western blot analysis in SH-SY5Y cell line lysates (35ug/lane). This demonstrates the CEBPD antibody detected the CEBPD protein (arrow).

#### CEBPD Antibody (C-term) - Background

The protein encoded by this intronless gene is a bZIP transcription factor which can bind as a homodimer to certain DNA regulatory regions. It can also form heterodimers with the related protein CEBP-alpha. The encoded protein is important in the regulation of genes involved in immune and inflammatory responses, and may be involved in the regulation of genes associated with activation and/or differentiation of macrophages. The cytogenetic

location of this locus has been reported as both 8p11 and 8q11.

#### **CEBPD Antibody (C-term) - References**

- Zannetti, C., et al. J. Biol. Chem. 285(45):34773-34780(2010)  
Wang, J., et al. Proc. Natl. Acad. Sci. U.S.A. 107(37):16131-16136(2010)  
Hour, T.C., et al. Biochem. Pharmacol. 80(3):325-334(2010)  
Bennett, C.E., et al. Diab Vasc Dis Res 7(3):195-203(2010)  
Payne, V.A., et al. Biochem. J. 425(1):215-223(2010)