

SQLE Antibody (N-term)
Affinity Purified Rabbit Polyclonal Antibody (Pab)
Catalog # AP12624a**Specification**

SQLE Antibody (N-term) - Product Information

Application	WB, IHC-P,E
Primary Accession	O14534
Other Accession	NP_003120.2
Reactivity	Human
Host	Rabbit
Clonality	Polyclonal
Isotype	Rabbit IgG
Calculated MW	63923
Antigen Region	68-97

SQLE Antibody (N-term) - Additional Information**Gene ID** 6713**Other Names**

Squalene monooxygenase, Squalene epoxidase, SE, SQLE, ERG1

Target/Specificity

This SQLE antibody is generated from rabbits immunized with a KLH conjugated synthetic peptide between 68-97 amino acids from the N-terminal region of human SQLE.

DilutionWB~~1:1000
IHC-P~~1:10~50**Format**

Purified polyclonal antibody supplied in PBS with 0.09% (W/V) sodium azide. This antibody is purified through a protein A column, followed by peptide affinity purification.

Storage

Maintain refrigerated at 2-8°C for up to 2 weeks. For long term storage store at -20°C in small aliquots to prevent freeze-thaw cycles.

Precautions

SQLE Antibody (N-term) is for research use only and not for use in diagnostic or therapeutic procedures.

SQLE Antibody (N-term) - Protein Information**Name** SQLE**Synonyms** ERG1

Function Catalyzes the stereospecific oxidation of squalene to (S)- 2,3-epoxysqualene, and is considered to be a rate-limiting enzyme in steroid biosynthesis.

Cellular Location

Microsome membrane; Peripheral membrane protein. Endoplasmic reticulum membrane; Peripheral membrane protein

Tissue Location

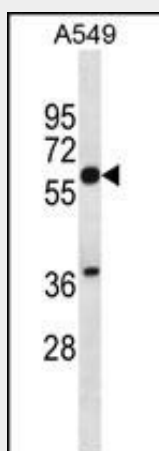
Detected in liver (at protein level).

SQLE Antibody (N-term) - Protocols

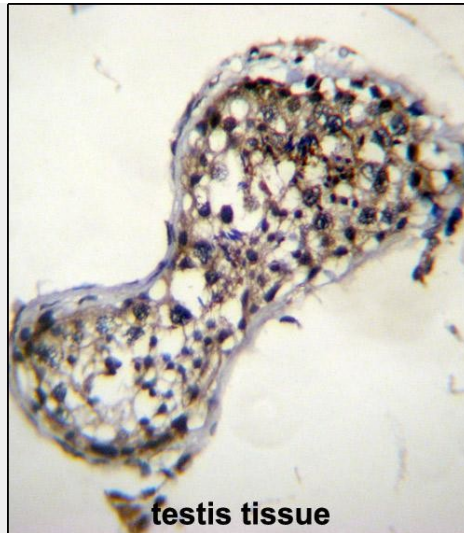
Provided below are standard protocols that you may find useful for product applications.

- [Western Blot](#)
- [Blocking Peptides](#)
- [Dot Blot](#)
- [Immunohistochemistry](#)
- [Immunofluorescence](#)
- [Immunoprecipitation](#)
- [Flow Cytometry](#)
- [Cell Culture](#)

SQLE Antibody (N-term) - Images



SQLE Antibody (N-term) (Cat. #AP12624a) western blot analysis in A549 cell line lysates (35ug/lane). This demonstrates the SQLE antibody detected the SQLE protein (arrow).



SQLE Antibody (N-term) (Cat. #AP12624a) immunohistochemistry analysis in formalin fixed and paraffin embedded human testis tissue followed by peroxidase conjugation of the secondary antibody and DAB staining. This data demonstrates the use of SQLE Antibody (N-term) for immunohistochemistry. Clinical relevance has not been evaluated.

SQLE Antibody (N-term) - Background

Squalene epoxidase catalyzes the first oxygenation step in sterol biosynthesis and is thought to be one of the rate-limiting enzymes in this pathway.

SQLE Antibody (N-term) - References

Bailey, S.D., et al. Diabetes Care (2010) In press :
Talmud, P.J., et al. Am. J. Hum. Genet. 85(5):628-642(2009)
Lu, Y., et al. J. Lipid Res. 49(12):2582-2589(2008)
Helms, M.W., et al. Br. J. Cancer 99(5):774-780(2008)
Liu, Y., et al. Lung Cancer 56(3):307-317(2007)