

HINFP Antibody (Center)
Affinity Purified Rabbit Polyclonal Antibody (Pab)
Catalog # AP12622c

Specification

HINFP Antibody (Center) - Product Information

Application	WB,E
Primary Accession	O9BOA5
Other Accession	NP_945322.1 , NP_056332.2
Reactivity	Human, Mouse
Host	Rabbit
Clonality	Polyclonal
Isotype	Rabbit IgG
Antigen Region	317-346

HINFP Antibody (Center) - Additional Information

Gene ID 25988

Other Names

Histone H4 transcription factor, Histone nuclear factor P, HiNF-P, MBD2-interacting zinc finger protein, Methyl-CpG-binding protein 2-interacting zinc finger protein, HINFP, MIZF, ZNF743

Target/Specificity

This HINFP antibody is generated from rabbits immunized with a KLH conjugated synthetic peptide between 317-346 amino acids from the Central region of human HINFP.

Dilution

WB~~1:1000

Format

Purified polyclonal antibody supplied in PBS with 0.09% (W/V) sodium azide. This antibody is purified through a protein A column, followed by peptide affinity purification.

Storage

Maintain refrigerated at 2-8°C for up to 2 weeks. For long term storage store at -20°C in small aliquots to prevent freeze-thaw cycles.

Precautions

HINFP Antibody (Center) is for research use only and not for use in diagnostic or therapeutic procedures.

HINFP Antibody (Center) - Protein Information

Name HINFP

Synonyms MIZF, ZNF743

Function Transcriptional repressor that binds to the consensus sequence 5'-CGGACGTT-3' and to the RB1 promoter. Transcriptional activator that promotes histone H4 gene transcription at the G1/S phase transition in conjunction with NPAT. Also activates transcription of the ATM and PRKDC genes. Autoregulates its expression by associating with its own promoter.

Cellular Location

Nucleus. Note=Associated with discrete nuclear foci

Tissue Location

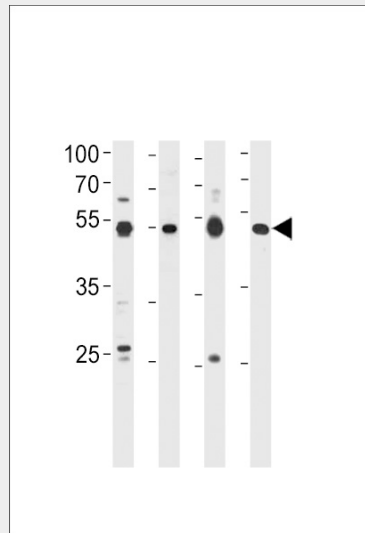
Ubiquitous. Highly expressed in brain, heart, skeletal muscle, spleen, kidney, small intestine, placenta and liver

HINFP Antibody (Center) - Protocols

Provided below are standard protocols that you may find useful for product applications.

- [Western Blot](#)
- [Blocking Peptides](#)
- [Dot Blot](#)
- [Immunohistochemistry](#)
- [Immunofluorescence](#)
- [Immunoprecipitation](#)
- [Flow Cytometry](#)
- [Cell Culture](#)

HINFP Antibody (Center) - Images



HINFP Antibody (Center) (Cat. #AP12622c) western blot analysis in 293 cell line, human placenta, mouse brain and spleen tissue lysates (35ug/lane). This demonstrates the HINFP antibody detected the HINFP protein (arrow).

HINFP Antibody (Center) - Background

MIZF interacts with methyl-CpG-binding protein-2 (MBD2; MIM 603547), a component of the MeCP1 histone deacetylase (HDAC) complex, and plays a role in DNA methylation and transcription repression.

HINFP Antibody (Center) - References

- Bailey, S.D., et al. Diabetes Care 33(10):2250-2253(2010)
Talmud, P.J., et al. Am. J. Hum. Genet. 85(5):628-642(2009)
Mitra, P., et al. J. Cell. Physiol. 219(2):438-448(2009)
Medina, R., et al. Biochemistry 47(44):11415-11423(2008)
Medina, R., et al. Cancer Res. 67(21):10334-10342(2007)