

EIF4H Antibody (Center)
Affinity Purified Rabbit Polyclonal Antibody (Pab)
Catalog # AP12612c**Specification**

EIF4H Antibody (Center) - Product Information

| | |
|-------------------|--|
| Application | WB, IHC-P,E |
| Primary Accession | Q15056 |
| Other Accession | Q9WUK2 , NP_114381.1 |
| Reactivity | Human |
| Predicted | Mouse |
| Host | Rabbit |
| Clonality | Polyclonal |
| Isotype | Rabbit IgG |
| Calculated MW | 27385 |
| Antigen Region | 127-156 |

EIF4H Antibody (Center) - Additional Information**Gene ID** 7458**Other Names**

Eukaryotic translation initiation factor 4H, eIF-4H, Williams-Beuren syndrome chromosomal region 1 protein, EIF4H, KIAA0038, WBSCR1, WSCR1

Target/Specificity

This EIF4H antibody is generated from rabbits immunized with a KLH conjugated synthetic peptide between 127-156 amino acids from the Central region of human EIF4H.

DilutionWB~~1:1000
IHC-P~~1:10~50**Format**

Purified polyclonal antibody supplied in PBS with 0.09% (W/V) sodium azide. This antibody is purified through a protein A column, followed by peptide affinity purification.

Storage

Maintain refrigerated at 2-8°C for up to 2 weeks. For long term storage store at -20°C in small aliquots to prevent freeze-thaw cycles.

Precautions

EIF4H Antibody (Center) is for research use only and not for use in diagnostic or therapeutic procedures.

EIF4H Antibody (Center) - Protein Information**Name** EIF4H

Synonyms KIAA0038, WBSCR1, WSCR1

Function Stimulates the RNA helicase activity of EIF4A in the translation initiation complex. Binds weakly mRNA.

Cellular Location

Cytoplasm, perinuclear region.

Tissue Location

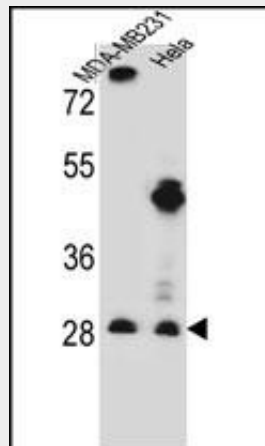
The short isoform is the predominant isoform and is expressed alone in liver and skeletal muscle. Both isoforms are expressed in fibroblast, spleen, testis and bone marrow. Levels are high in lung and pancreas and low in heart, frontal cortex and kidney

EIF4H Antibody (Center) - Protocols

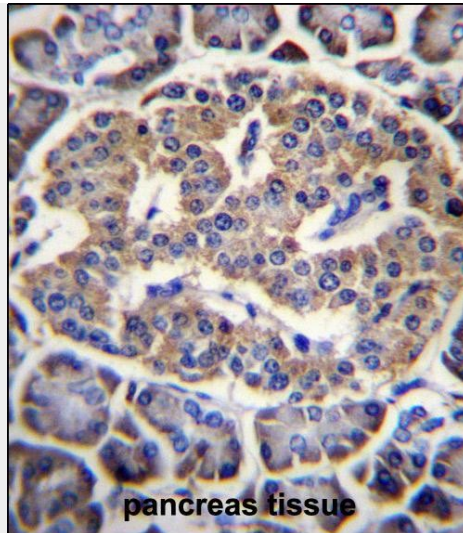
Provided below are standard protocols that you may find useful for product applications.

- [Western Blot](#)
- [Blocking Peptides](#)
- [Dot Blot](#)
- [Immunohistochemistry](#)
- [Immunofluorescence](#)
- [Immunoprecipitation](#)
- [Flow Cytometry](#)
- [Cell Culture](#)

EIF4H Antibody (Center) - Images



EIF4H Antibody (Center) (Cat. #AP12612c) western blot analysis in MDA-MB231, HeLa cell line lysates (35ug/lane). This demonstrates the EIF4H antibody detected the EIF4H protein (arrow).



EIF4H Antibody (Center) (Cat. #AP12612c) immunohistochemistry analysis in formalin fixed and paraffin embedded human pancreas tissue followed by peroxidase conjugation of the secondary antibody and DAB staining. This data demonstrates the use of EIF4H Antibody (Center) for immunohistochemistry. Clinical relevance has not been evaluated.

EIF4H Antibody (Center) - Background

This gene encodes one of the translation initiation factors, which functions to stimulate the initiation of protein synthesis at the level of mRNA utilization. This gene is deleted in Williams syndrome, a multisystem developmental disorder caused by the deletion of contiguous genes at 7q11.23. Alternative splicing of this gene generates 2 transcript variants.

EIF4H Antibody (Center) - References

Feng, T., et al. Hum. Genet. 128(3):269-280(2010)
Zhu, X., et al. Genet. Epidemiol. 34(2):171-187(2010)
Mokas, S., et al. Mol. Biol. Cell 20(11):2673-2683(2009)
Marintchev, A., et al. Cell 136(3):447-460(2009)
Rozovsky, N., et al. RNA 14(10):2136-2148(2008)