

**ABI2 Antibody (N-term)**  
**Affinity Purified Rabbit Polyclonal Antibody (Pab)**  
**Catalog # AP12566A**

**Specification**

---

**ABI2 Antibody (N-term) - Product Information**

Application	WB, FC,E
Primary Accession	<a href="#">O9NYB9</a>
Other Accession	<a href="#">P62484</a> , <a href="#">NP_005750.4</a>
Reactivity	Human, Mouse
Host	Rabbit
Clonality	Polyclonal
Isotype	Rabbit IgG
Calculated MW	55663
Antigen Region	1-30

**ABI2 Antibody (N-term) - Additional Information**

**Gene ID** 10152

**Other Names**

Abl interactor 2, Abelson interactor 2, Abi-2, Abl-binding protein 3, AbIBP3, Arg-binding protein 1, ArgBP1, ABI2, ARGBPIA

**Target/Specificity**

This ABI2 antibody is generated from rabbits immunized with a KLH conjugated synthetic peptide between 1-30 amino acids from the N-terminal region of human ABI2.

**Dilution**

WB~~1:1000  
FC~~1:10~50

**Format**

Purified polyclonal antibody supplied in PBS with 0.09% (W/V) sodium azide. This antibody is purified through a protein A column, followed by peptide affinity purification.

**Storage**

Maintain refrigerated at 2-8°C for up to 2 weeks. For long term storage store at -20°C in small aliquots to prevent freeze-thaw cycles.

**Precautions**

ABI2 Antibody (N-term) is for research use only and not for use in diagnostic or therapeutic procedures.

**ABI2 Antibody (N-term) - Protein Information**

**Name** ABI2 {ECO:0000303|PubMed:28397838, ECO:0000312|HGNC:HGNC:24011}

**Function** Regulator of actin cytoskeleton dynamics underlying cell motility and adhesion. Functions as a component of the WAVE complex, which activates actin nucleating machinery Arp2/3 to drive lamellipodia formation (PubMed:[21107423](#)). Acts as a regulator and substrate of nonreceptor tyrosine kinases ABL1 and ABL2 involved in processes linked to cell growth and differentiation. Positively regulates ABL1-mediated phosphorylation of ENAH, which is required for proper polymerization of nucleated actin filaments at the leading edge (PubMed:[10498863](#), PubMed:[7590236](#), PubMed:[8649853](#)). Contributes to the regulation of actin assembly at the tips of neuron projections. In particular, controls dendritic spine morphogenesis and may promote dendritic spine specification toward large mushroom-type spines known as repositories of memory in the brain (By similarity). In hippocampal neurons, may mediate actin-dependent BDNF-NTRK2 early endocytic trafficking that triggers dendrite outgrowth (By similarity). Participates in ocular lens morphogenesis, likely by regulating lamellipodia-driven adherens junction formation at the epithelial cell-secondary lens fiber interface (By similarity). Also required for nascent adherens junction assembly in epithelial cells (PubMed:[15572692](#)).

#### Cellular Location

Cytoplasm. Nucleus

#### Tissue Location

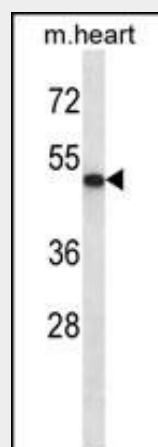
Widely expressed. Abundant in testes, ovary, thymus, and colon, with lower but detectable levels in prostate, peripheral blood leukocytes, and spleen.

### ABI2 Antibody (N-term) - Protocols

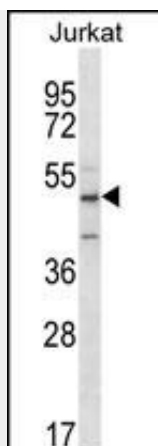
Provided below are standard protocols that you may find useful for product applications.

- [Western Blot](#)
- [Blocking Peptides](#)
- [Dot Blot](#)
- [Immunohistochemistry](#)
- [Immunofluorescence](#)
- [Immunoprecipitation](#)
- [Flow Cytometry](#)
- [Cell Culture](#)

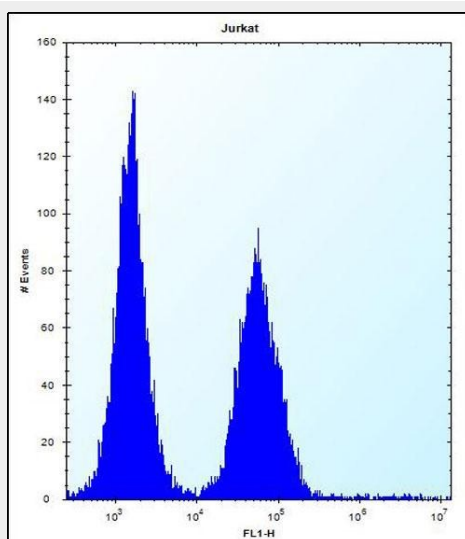
### ABI2 Antibody (N-term) - Images



ABI2 Antibody (N-term) (Cat. #AP12566a) western blot analysis in mouse heart tissue lysates (35ug/lane). This demonstrates the ABI2 antibody detected the ABI2 protein (arrow).



ABI2 Antibody (N-term) (Cat. #AP12566) western blot analysis in Jurkat cell line lysates (35ug/lane). This demonstrates the ABI2 antibody detected the ABI2 protein (arrow).



ABI2 Antibody (N-term) (Cat. #AP12566a) flow cytometric analysis of Jurkat cells (right histogram) compared to a negative control cell (left histogram). FITC-conjugated donkey-anti-rabbit secondary antibodies were used for the analysis.

### **ABI2 Antibody (N-term) - Background**

ABI2 may act in regulation of cell growth and transformation by interacting with nonreceptor tyrosine kinases ABL1 and/or ABL2. May be involved in cytoskeletal reorganization. Regulates ABL1/c-Abl-mediated phosphorylation of MENA.

### **ABI2 Antibody (N-term) - References**

- Ryu, J.R., et al. Mol. Cell. Biol. 29(7):1735-1748(2009)
- Kano, S., et al. Cancer Res. 68(14):5572-5580(2008)
- Sugiyama, N., et al. Mol. Cell Proteomics 6(6):1103-1109(2007)
- Li, Y., et al. J. Cell. Sci. 120 (PT 8), 1436-1446 (2007) :
- O'Donnell, C.J., et al. BMC Med. Genet. 8 SUPPL 1, S4 (2007) :