

**LIPM Antibody (C-term)**  
**Affinity Purified Rabbit Polyclonal Antibody (Pab)**  
**Catalog # AP12530b**

**Specification**

---

**LIPM Antibody (C-term) - Product Information**

Application	WB, IHC-P,E
Primary Accession	<a href="#">Q5VYY2</a>
Other Accession	<a href="#">NP_001121687.1</a>
Reactivity	Human
Host	Rabbit
Clonality	Polyclonal
Isotype	Rabbit IgG
Calculated MW	48233
Antigen Region	318-346

**LIPM Antibody (C-term) - Additional Information**

**Gene ID** 340654

**Other Names**

Lipase member M, 311-, Lipase-like abhydrolase domain-containing protein 3, LIPM, LIPL3

**Target/Specificity**

This LIPM antibody is generated from rabbits immunized with a KLH conjugated synthetic peptide between 318-346 amino acids from the C-terminal region of human LIPM.

**Dilution**

WB~~1:1000  
IHC-P~~1:10~50

**Format**

Purified polyclonal antibody supplied in PBS with 0.09% (W/V) sodium azide. This antibody is purified through a protein A column, followed by peptide affinity purification.

**Storage**

Maintain refrigerated at 2-8°C for up to 2 weeks. For long term storage store at -20°C in small aliquots to prevent freeze-thaw cycles.

**Precautions**

LIPM Antibody (C-term) is for research use only and not for use in diagnostic or therapeutic procedures.

**LIPM Antibody (C-term) - Protein Information**

**Name** LIPM

**Synonyms** LIPL3

**Function** Plays a highly specific role in the last step of keratinocyte differentiation. May have an essential function in lipid metabolism of the most differentiated epidermal layers.

**Cellular Location**

Secreted.

**Tissue Location**

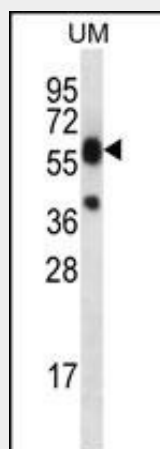
Exclusively expressed in the epidermis within the granular keratinocytes.

**LIPM Antibody (C-term) - Protocols**

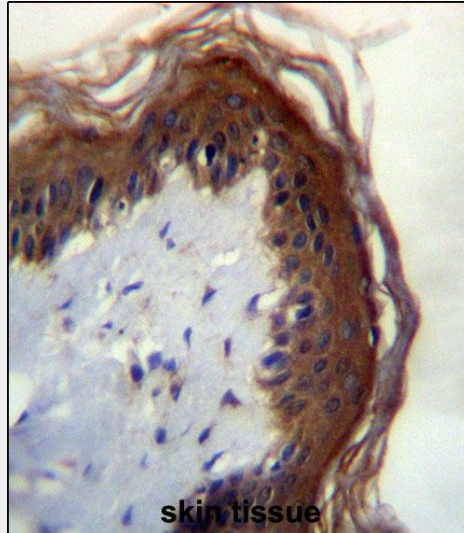
Provided below are standard protocols that you may find useful for product applications.

- [Western Blot](#)
- [Blocking Peptides](#)
- [Dot Blot](#)
- [Immunohistochemistry](#)
- [Immunofluorescence](#)
- [Immunoprecipitation](#)
- [Flow Cytometry](#)
- [Cell Culture](#)

**LIPM Antibody (C-term) - Images**



LIPM Antibody (C-term) (Cat. #AP12530b) western blot analysis in uterus tumor cell line lysates (35ug/lane). This demonstrates the LIPM antibody detected the LIPM protein (arrow).



LIPM Antibdy (C-term) (Cat. #AP12530b)immunohistochemistry analysis in formalin fixed and paraffin embedded human skin tissue followed by peroxidase conjugation of the secondary antibody and DAB staining.This data demonstrates the use of LIPM Antibdy (C-term) for immunohistochemistry. Clinical relevance has not been evaluated.

#### **LIPM Antibody (C-term) - Background**

LIPM plays a highly specific role in the last step of keratinocyte differentiation. May have an essential function in lipid metabolism of the most differentiated epidermal layers.

#### **LIPM Antibody (C-term) - References**

Toulza, E., et al. Genome Biol. 8 (6), R107 (2007) :