

WDR86 Antibody (C-term)
Affinity Purified Rabbit Polyclonal Antibody (Pab)
Catalog # AP12522b

Specification

WDR86 Antibody (C-term) - Product Information

Application	WB, IHC-P,E
Primary Accession	Q86T14
Other Accession	NP_938026.2
Reactivity	Human
Host	Rabbit
Clonality	Polyclonal
Isotype	Rabbit IgG
Calculated MW	40731
Antigen Region	286-316

WDR86 Antibody (C-term) - Additional Information

Gene ID 349136

Other Names

WD repeat-containing protein 86, WDR86

Target/Specificity

This WDR86 antibody is generated from rabbits immunized with a KLH conjugated synthetic peptide between 286-316 amino acids from the C-terminal region of human WDR86.

Dilution

WB~~1:1000
IHC-P~~1:10~50

Format

Purified polyclonal antibody supplied in PBS with 0.09% (W/V) sodium azide. This antibody is purified through a protein A column, followed by peptide affinity purification.

Storage

Maintain refrigerated at 2-8°C for up to 2 weeks. For long term storage store at -20°C in small aliquots to prevent freeze-thaw cycles.

Precautions

WDR86 Antibody (C-term) is for research use only and not for use in diagnostic or therapeutic procedures.

WDR86 Antibody (C-term) - Protein Information

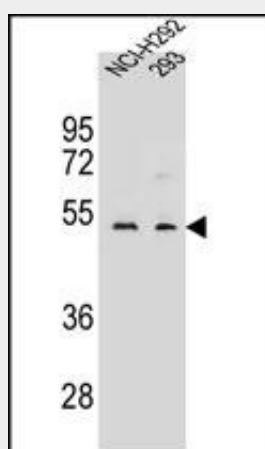
Name WDR86

WDR86 Antibody (C-term) - Protocols

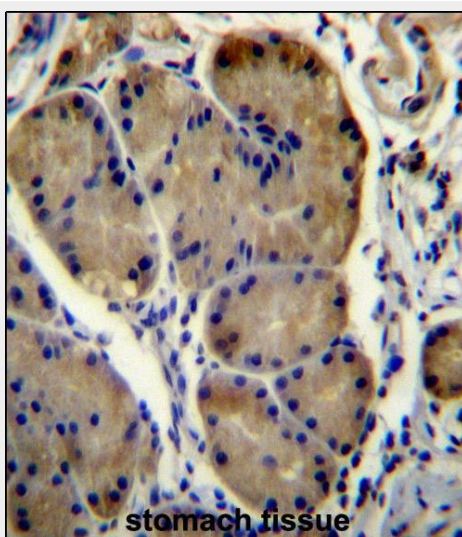
Provided below are standard protocols that you may find useful for product applications.

- [Western Blot](#)
- [Blocking Peptides](#)
- [Dot Blot](#)
- [Immunohistochemistry](#)
- [Immunofluorescence](#)
- [Immunoprecipitation](#)
- [Flow Cytometry](#)
- [Cell Culture](#)

WDR86 Antibody (C-term) - Images



WDR86 Antibody (C-term) (Cat. #AP12522b) western blot analysis in NCI-H292,293 cell line lysates (35ug/lane). This demonstrates the WDR86 antibody detected the WDR86 protein (arrow).



WDR86 Antibody (C-term) (Cat. #AP12522b) immunohistochemistry analysis in formalin fixed and paraffin embedded human stomach tissue followed by peroxidase conjugation of the secondary antibody and DAB staining. This data demonstrates the use of WDR86 Antibody (C-term) for immunohistochemistry. Clinical relevance has not been evaluated.

WDR86 Antibody (C-term) - Background

The function of this protein remains unknown.

WDR86 Antibody (C-term) - References

Kimura, K., et al. Genome Res. 16(1):55-65(2006)

Strausberg, R.L., et al. Proc. Natl. Acad. Sci. U.S.A. 99(26):16899-16903(2002)