

NKAIN1 Antibody (C-term)
Affinity Purified Rabbit Polyclonal Antibody (Pab)
Catalog # AP12478b

Specification

NKAIN1 Antibody (C-term) - Product Information

Application	WB, FC,E
Primary Accession	O4KMZ8
Other Accession	O9D035 , NP_078798.2
Reactivity	Human
Predicted	Mouse
Host	Rabbit
Clonality	Polyclonal
Isotype	Rabbit IgG
Calculated MW	23552
Antigen Region	157-186

NKAIN1 Antibody (C-term) - Additional Information

Gene ID 79570

Other Names

Sodium/potassium-transporting ATPase subunit beta-1-interacting protein 1, Na(+)/K(+)-transporting ATPase subunit beta-1-interacting protein 1, Protein FAM77C, NKAIN1, FAM77C

Target/Specificity

This NKAIN1 antibody is generated from rabbits immunized with a KLH conjugated synthetic peptide between 157-186 amino acids from the C-terminal region of human NKAIN1.

Dilution

WB~~1:1000
FC~~1:10~50

Format

Purified polyclonal antibody supplied in PBS with 0.09% (W/V) sodium azide. This antibody is purified through a protein A column, followed by peptide affinity purification.

Storage

Maintain refrigerated at 2-8°C for up to 2 weeks. For long term storage store at -20°C in small aliquots to prevent freeze-thaw cycles.

Precautions

NKAIN1 Antibody (C-term) is for research use only and not for use in diagnostic or therapeutic procedures.

NKAIN1 Antibody (C-term) - Protein Information

Name NKAIN1

Synonyms FAM77C

Cellular Location

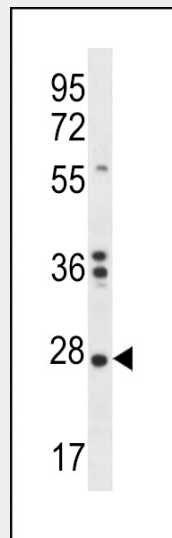
Cell membrane; Multi-pass membrane protein

NKAIN1 Antibody (C-term) - Protocols

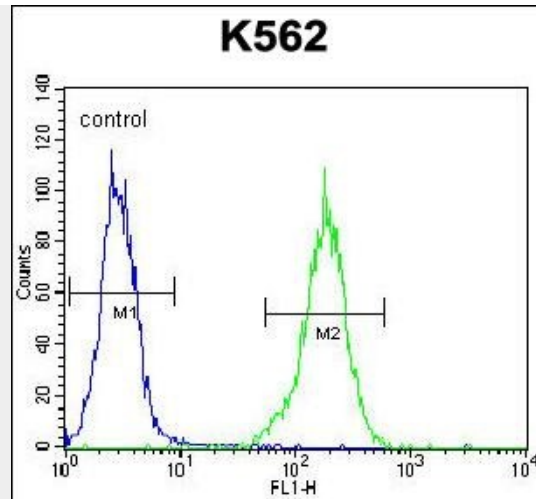
Provided below are standard protocols that you may find useful for product applications.

- [Western Blot](#)
- [Blocking Peptides](#)
- [Dot Blot](#)
- [Immunohistochemistry](#)
- [Immunofluorescence](#)
- [Immunoprecipitation](#)
- [Flow Cytometry](#)
- [Cell Culture](#)

NKAIN1 Antibody (C-term) - Images



NKAIN1 Antibody (C-term) (Cat. #AP12478b) western blot analysis in K562 cell line lysates (35ug/lane). This demonstrates the NKAIN1 antibody detected the NKAIN1 protein (arrow).



NKAIN1 Antibody (C-term) (Cat. #AP12478b) flow cytometric analysis of K562 cells (right histogram) compared to a negative control cell (left histogram).FITC-conjugated goat-anti-rabbit secondary antibodies were used for the analysis.

NKAIN1 Antibody (C-term) - Background

The function of this protein remains unknown.