

STX2 Antibody (Center)
Affinity Purified Rabbit Polyclonal Antibody (Pab)
Catalog # AP12469c

Specification

STX2 Antibody (Center) - Product Information

Application	WB, IHC-P,E
Primary Accession	P32856
Other Accession	NP_001971.2 , NP_919337.1
Reactivity	Human, Mouse
Host	Rabbit
Clonality	Polyclonal
Isotype	Rabbit IgG
Calculated MW	33341
Antigen Region	123-152

STX2 Antibody (Center) - Additional Information

Gene ID 2054

Other Names

Syntaxin-2, Epimorphin, STX2, EPIM, STX2A, STX2B, STX2C

Target/Specificity

This STX2 antibody is generated from rabbits immunized with a KLH conjugated synthetic peptide between 123-152 amino acids from the Central region of human STX2.

Dilution

WB~~1:1000
IHC-P~~1:10~50

Format

Purified polyclonal antibody supplied in PBS with 0.09% (W/V) sodium azide. This antibody is purified through a protein A column, followed by peptide affinity purification.

Storage

Maintain refrigerated at 2-8°C for up to 2 weeks. For long term storage store at -20°C in small aliquots to prevent freeze-thaw cycles.

Precautions

STX2 Antibody (Center) is for research use only and not for use in diagnostic or therapeutic procedures.

STX2 Antibody (Center) - Protein Information

Name STX2

Synonyms EPIM, STX2A, STX2B, STX2C

Function Essential for epithelial morphogenesis. May mediate Ca(2+)- regulation of exocytosis acrossomal reaction in sperm.

Cellular Location

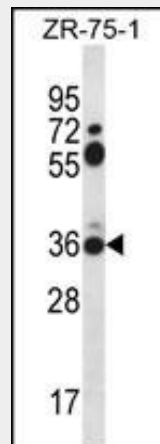
Membrane; Single-pass type IV membrane protein.

STX2 Antibody (Center) - Protocols

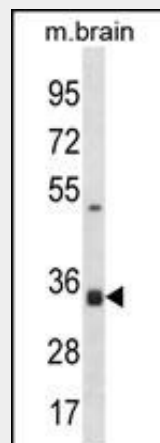
Provided below are standard protocols that you may find useful for product applications.

- [Western Blot](#)
- [Blocking Peptides](#)
- [Dot Blot](#)
- [Immunohistochemistry](#)
- [Immunofluorescence](#)
- [Immunoprecipitation](#)
- [Flow Cytometry](#)
- [Cell Culture](#)

STX2 Antibody (Center) - Images

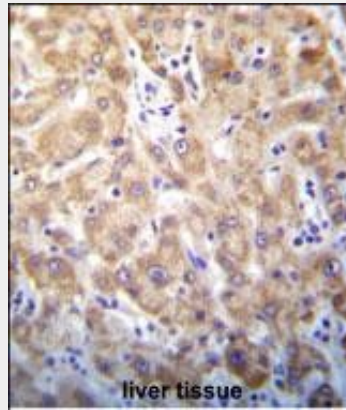


STX2 Antibody (Center) (Cat. #AP12469c) western blot analysis in ZR-75-1 cell line lysates (35ug/lane). This demonstrates the STX2 antibody detected the STX2 protein (arrow).



STX2 Antibody (Center) (Cat. #AP12469c) western blot analysis in mouse brain tissue lysates

(35ug/lane). This demonstrates the STX2 antibody detected the STX2 protein (arrow).



STX2 Antibody (Center) (Cat. #AP12469c) immunohistochemistry analysis in formalin fixed and paraffin embedded human liver tissue followed by peroxidase conjugation of the secondary antibody and DAB staining. This data demonstrates the use of STX2 Antibody (Center) for immunohistochemistry. Clinical relevance has not been evaluated.

STX2 Antibody (Center) - Background

The product of this gene belongs to the syntaxin/epimorphin family of proteins. The syntaxins are a large protein family implicated in the targeting and fusion of intracellular transport vesicles. The product of this gene regulates epithelial-mesenchymal interactions and epithelial cell morphogenesis and activation. Alternatively spliced transcript variants encoding different isoforms have been identified.

STX2 Antibody (Center) - References

Chen, C.S., et al. J. Biol. Chem. 284(11):6877-6884(2009)
Okugawa, Y., et al. J. Invest. Dermatol. 128(8):1884-1893(2008)
Flaumenhaft, R., et al. Blood 110(5):1492-1501(2007)
Low, S.H., et al. Mol. Biol. Cell 17(2):977-989(2006)
Band, A.M., et al. BMC Cell Biol. 6 (1), 26 (2005) :