

**RPS6KC1 Antibody (N-term)**  
**Affinity Purified Rabbit Polyclonal Antibody (Pab)**  
**Catalog # AP12461a**

## Specification

---

### RPS6KC1 Antibody (N-term) - Product Information

Application	WB, IHC-P,E
Primary Accession	<a href="#">O96S38</a>
Other Accession	<a href="#">O8BLK9</a> , <a href="#">NP_036556.2</a> , <a href="#">NP_001129610.1</a>
Reactivity	Mouse
Host	Rabbit
Clonality	Polyclonal
Isotype	Rabbit IgG
Calculated MW	118682
Antigen Region	20-47

### RPS6KC1 Antibody (N-term) - Additional Information

**Gene ID** 26750

#### Other Names

Ribosomal protein S6 kinase delta-1, S6K-delta-1, 52 kDa ribosomal protein S6 kinase, Ribosomal S6 kinase-like protein with two PSK domains 118 kDa protein, SPHK1-binding protein, RPS6KC1, RPK118

#### Target/Specificity

This RPS6KC1 antibody is generated from rabbits immunized with a KLH conjugated synthetic peptide between 20-47 amino acids from the N-terminal region of human RPS6KC1.

#### Dilution

WB~~1:1000  
IHC-P~~1:10~50

#### Format

Purified polyclonal antibody supplied in PBS with 0.09% (W/V) sodium azide. This antibody is purified through a protein A column, followed by peptide affinity purification.

#### Storage

Maintain refrigerated at 2-8°C for up to 2 weeks. For long term storage store at -20°C in small aliquots to prevent freeze-thaw cycles.

#### Precautions

RPS6KC1 Antibody (N-term) is for research use only and not for use in diagnostic or therapeutic procedures.

### RPS6KC1 Antibody (N-term) - Protein Information

**Name** RPS6KC1

### Synonyms RPK118

**Function** May be involved in transmitting sphingosine-1 phosphate (SPP)-mediated signaling into the cell (PubMed:[12077123](#)). Plays a role in the recruitment of PRDX3 to early endosomes (PubMed:[15750338](#)).

### Cellular Location

Cytoplasm. Membrane Early endosome

### Tissue Location

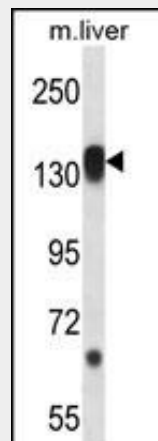
Highly expressed in testis, skeletal muscle, brain, heart, placenta, kidney and liver and weakly expressed in thymus, small intestine, lung and colon.

### RPS6KC1 Antibody (N-term) - Protocols

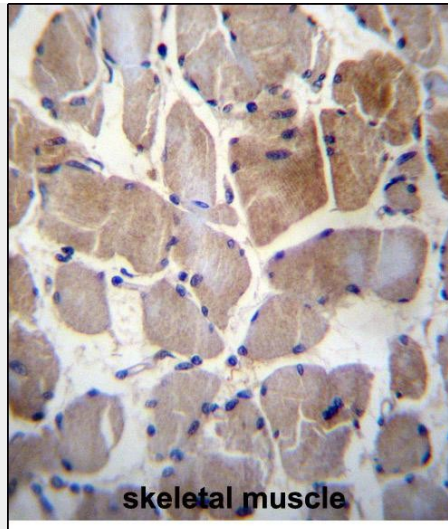
Provided below are standard protocols that you may find useful for product applications.

- [Western Blot](#)
- [Blocking Peptides](#)
- [Dot Blot](#)
- [Immunohistochemistry](#)
- [Immunofluorescence](#)
- [Immunoprecipitation](#)
- [Flow Cytometry](#)
- [Cell Culture](#)

### RPS6KC1 Antibody (N-term) - Images



RPS6KC1 Antibody (N-term) (Cat. #AP12461a) western blot analysis in mouse liver tissue lysates (35ug/lane). This demonstrates the RPS6KC1 antibody detected the RPS6KC1 protein (arrow).



RPS6KC1 Antibody (N-term) (Cat. #AP12461a) immunohistochemistry analysis in formalin fixed and paraffin embedded human skeletal muscle followed by peroxidase conjugation of the secondary antibody and DAB staining. This data demonstrates the use of RPS6KC1 Antibody (N-term) for immunohistochemistry. Clinical relevance has not been evaluated.

#### **RPS6KC1 Antibody (N-term) - Background**

RPS6KC1 may be involved in transmitting sphingosine-1 phosphate (SPP)-mediated signaling into the cell.

#### **RPS6KC1 Antibody (N-term) - References**

- Olsen, J.V., et al. Cell 127(3):635-648(2006)
- Olsen, J.V., et al. Cell 127(3):635-648(2006)
- Liu, L., et al. Mol. Cells 19(1):39-45(2005)
- Lehner, B., et al. Genomics 83(1):153-167(2004)
- Hayashi, S., et al. J. Biol. Chem. 277(36):33319-33324(2002)