

**RASAL1 Antibody (Center)**  
**Affinity Purified Rabbit Polyclonal Antibody (Pab)**  
**Catalog # AP12460c**

**Specification**

---

**RASAL1 Antibody (Center) - Product Information**

Application	WB,E
Primary Accession	<a href="#">O95294</a>
Other Accession	<a href="#">NP_004649.2</a> , <a href="#">NP_001180450.1</a>
Reactivity	Mouse
Host	Rabbit
Clonality	Polyclonal
Isotype	Rabbit IgG
Calculated MW	90016
Antigen Region	309-337

**RASAL1 Antibody (Center) - Additional Information**

**Gene ID** 8437

**Other Names**

RasGAP-activating-like protein 1, RASAL1, RASAL

**Target/Specificity**

This RASAL1 antibody is generated from rabbits immunized with a KLH conjugated synthetic peptide between 309-337 amino acids from the Central region of human RASAL1.

**Dilution**

WB~~1:1000

**Format**

Purified polyclonal antibody supplied in PBS with 0.09% (W/V) sodium azide. This antibody is purified through a protein A column, followed by peptide affinity purification.

**Storage**

Maintain refrigerated at 2-8°C for up to 2 weeks. For long term storage store at -20°C in small aliquots to prevent freeze-thaw cycles.

**Precautions**

RASAL1 Antibody (Center) is for research use only and not for use in diagnostic or therapeutic procedures.

**RASAL1 Antibody (Center) - Protein Information**

**Name** RASAL1 ([HGNC:9873](#))

**Function** Probable inhibitory regulator of the Ras-cyclic AMP pathway (PubMed:[9751798](#)). Plays a role in dendrite formation by melanocytes (PubMed:[23999003](#)).

### Tissue Location

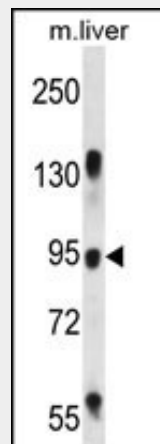
Highly expressed in thyroid and adrenal medulla, lower expression in brain, spinal cord and trachea (PubMed:9751798) Expressed in melanocytes (PubMed:23999003)

### RASAL1 Antibody (Center) - Protocols

Provided below are standard protocols that you may find useful for product applications.

- [Western Blot](#)
- [Blocking Peptides](#)
- [Dot Blot](#)
- [Immunohistochemistry](#)
- [Immunofluorescence](#)
- [Immunoprecipitation](#)
- [Flow Cytometry](#)
- [Cell Culture](#)

### RASAL1 Antibody (Center) - Images



RASAL1 Antibody (Center) (Cat. #AP12460c) western blot analysis in mouse liver tissue lysates (35ug/lane). This demonstrates the RASAL1 antibody detected the RASAL1 protein (arrow).

### RASAL1 Antibody (Center) - Background

The protein encoded by this gene is member of the GAP1 family of GTPase-activating proteins. These proteins stimulate the GTPase activity of normal RAS p21 but not its oncogenic counterpart. Acting as a suppressor of RAS function, the protein enhances the weak intrinsic GTPase activity of RAS proteins resulting in the inactive GDP-bound form of RAS, thereby allowing control of cellular proliferation and differentiation. This particular family member contains domains which are characteristic of the GAP1 subfamily of RasGAP proteins but, in contrast to the other GAP1 family members, this protein is strongly and selectively expressed in endocrine tissues. Alternatively spliced transcript variants that encode different isoforms have been described

### RASAL1 Antibody (Center) - References

Ohta, M., et al. Gastroenterology 136(1):206-216(2009)

Jin, H., et al. Proc. Natl. Acad. Sci. U.S.A. 104(30):12353-12358(2007)

Liu, Q., et al. J. Cell Biol. 170(2):183-190(2005)

Schmitt, J.M., et al. J. Biol. Chem. 277(45):43024-43032(2002)

Allen, M., et al. Gene 218 (1-2), 17-25 (1998) :