

**PDC Antibody (Center)**  
**Affinity Purified Rabbit Polyclonal Antibody (Pab)**  
**Catalog # AP12439c**

**Specification**

---

**PDC Antibody (Center) - Product Information**

Application	WB,E
Primary Accession	<a href="#">P20941</a>
Other Accession	<a href="#">NP_002588.3</a>
Reactivity	Human
Host	Rabbit
Clonality	Polyclonal
Isotype	Rabbit IgG
Calculated MW	28246
Antigen Region	59-88

**PDC Antibody (Center) - Additional Information**

**Gene ID** 5132

**Other Names**

Phosducin, PHD, 33 kDa phototransducing protein, Protein MEKA, PDC

**Target/Specificity**

This PDC antibody is generated from rabbits immunized with a KLH conjugated synthetic peptide between 59-88 amino acids from the Central region of human PDC.

**Dilution**

WB~~1:1000

**Format**

Purified polyclonal antibody supplied in PBS with 0.09% (W/V) sodium azide. This antibody is purified through a protein A column, followed by peptide affinity purification.

**Storage**

Maintain refrigerated at 2-8°C for up to 2 weeks. For long term storage store at -20°C in small aliquots to prevent freeze-thaw cycles.

**Precautions**

PDC Antibody (Center) is for research use only and not for use in diagnostic or therapeutic procedures.

**PDC Antibody (Center) - Protein Information**

**Name** PDC

**Function** May participate in the regulation of visual phototransduction or in the integration of photoreceptor metabolism. Inhibits the transcriptional activation activity of the cone-rod

homeobox CRX.

#### Cellular Location

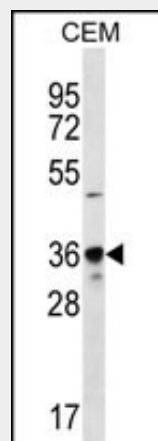
Cytoplasm, cytosol. Nucleus. Cell projection, cilium, photoreceptor outer segment  
{ECO:0000250|UniProtKB:P19632} Photoreceptor inner segment  
{ECO:0000250|UniProtKB:P19632}

#### PDC Antibody (Center) - Protocols

Provided below are standard protocols that you may find useful for product applications.

- [Western Blot](#)
- [Blocking Peptides](#)
- [Dot Blot](#)
- [Immunohistochemistry](#)
- [Immunofluorescence](#)
- [Immunoprecipitation](#)
- [Flow Cytometry](#)
- [Cell Culture](#)

#### PDC Antibody (Center) - Images



PDC Antibody (Center) (Cat. #AP12439c) western blot analysis in CEM cell line lysates (35ug/lane). This demonstrates the PDC antibody detected the PDC protein (arrow).

#### PDC Antibody (Center) - Background

This gene encodes a phosphoprotein, which is located in the outer and inner segments of the rod cells in the retina. This protein may participate in the regulation of visual phototransduction or in the integration of photoreceptor metabolism. It modulates the phototransduction cascade by interacting with the beta and gamma subunits of the retinal G-protein transducin. This gene is a potential candidate gene for retinitis pigmentosa and Usher syndrome type II. Alternatively spliced transcript variants encoding different isoforms have been identified.

#### PDC Antibody (Center) - References

Beetz, N., et al. J. Clin. Invest. 119(12):3597-3612(2009)  
Klenk, C., et al. J. Biol. Chem. 281(13):8357-8364(2006)  
Nishiguchi, K.M., et al. Mol. Vis. 10, 62-64 (2004) :  
Margulis, A., et al. Mol. Vis. 8, 477-482 (2002) :  
Wistow, G., et al. Mol. Vis. 8, 196-204 (2002) :