

VSGP/F-spondin Antibody (N-term)
Affinity Purified Rabbit Polyclonal Antibody (Pab)
Catalog # AP12414a

Specification

VSGP/F-spondin Antibody (N-term) - Product Information

Application	WB, IHC-P,E
Primary Accession	O9HCB6
Other Accession	O9GLX9 , NP_006099.2
Reactivity	Human, Mouse
Predicted	Bovine
Host	Rabbit
Clonality	Polyclonal
Isotype	Rabbit IgG
Antigen Region	15-43

VSGP/F-spondin Antibody (N-term) - Additional Information

Gene ID 10418

Other Names

Spondin-1, F-spondin, Vascular smooth muscle cell growth-promoting factor, SPON1, KIAA0762, VSGP

Target/Specificity

This VSGP/F-spondin antibody is generated from rabbits immunized with a KLH conjugated synthetic peptide between 15-43 amino acids from the N-terminal region of human VSGP/F-spondin.

Dilution

WB~~1:2000
IHC-P~~1:10~50

Format

Purified polyclonal antibody supplied in PBS with 0.09% (W/V) sodium azide. This antibody is purified through a protein A column, followed by peptide affinity purification.

Storage

Maintain refrigerated at 2-8°C for up to 2 weeks. For long term storage store at -20°C in small aliquots to prevent freeze-thaw cycles.

Precautions

VSGP/F-spondin Antibody (N-term) is for research use only and not for use in diagnostic or therapeutic procedures.

VSGP/F-spondin Antibody (N-term) - Protein Information

Name SPON1

Synonyms KIAA0762, VSGP

Function Cell adhesion protein that promotes the attachment of spinal cord and sensory neuron cells and the outgrowth of neurites in vitro. May contribute to the growth and guidance of axons in both the spinal cord and the PNS (By similarity). Major factor for vascular smooth muscle cell.

Cellular Location

Secreted, extracellular space, extracellular matrix

Tissue Location

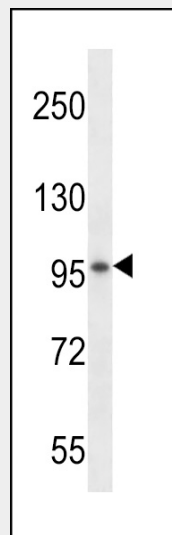
Highest expression in lung, lower expression in brain, heart, kidney, liver and testis, and lowest expression in pancreas, skeletal muscle and ovary. Not expressed in spleen

VSGP/F-spondin Antibody (N-term) - Protocols

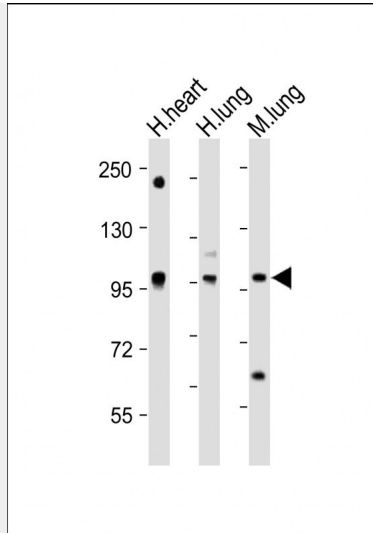
Provided below are standard protocols that you may find useful for product applications.

- [Western Blot](#)
- [Blocking Peptides](#)
- [Dot Blot](#)
- [Immunohistochemistry](#)
- [Immunofluorescence](#)
- [Immunoprecipitation](#)
- [Flow Cytometry](#)
- [Cell Culture](#)

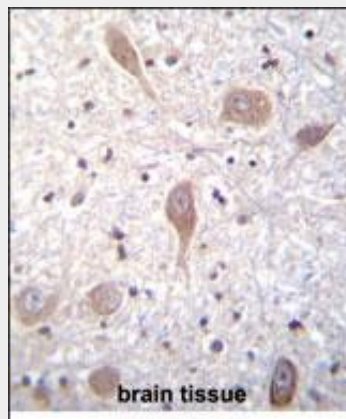
VSGP/F-spondin Antibody (N-term) - Images



VSGP/F-spondin Antibody (N-term) (Cat. #AP12414a) western blot analysis in mouse kidney tissue lysates (35ug/lane). This demonstrates the VSGP/F-spondin antibody detected the VSGP/F-spondin protein (arrow).



All lanes : Anti-VSGP/F-spondin Antibody (N-term) at 1:2000 dilution Lane 1: Human heart lysate
Lane 2: Human lung lysate Lane 3: Mouse lung lysate Lysates/proteins at 20 µg per lane.
Secondary Goat Anti-Rabbit IgG, (H+L), Peroxidase conjugated at 1/10000 dilution. Predicted band size : 91 kDa Blocking/Dilution buffer: 5% NFDM/TBST.



VSGP/F-spondin Antibody (N-term) (Cat. #AP12414a) immunohistochemistry analysis in formalin fixed and paraffin embedded human brain tissue followed by peroxidase conjugation of the secondary antibody and DAB staining. This data demonstrates the use of VSGP/F-spondin Antibody (N-term) for immunohistochemistry. Clinical relevance has not been evaluated.

VSGP/F-spondin Antibody (N-term) - Background

Cell adhesion protein that promotes the attachment of spinal cord and sensory neuron cells and the outgrowth of neurites in vitro. May contribute to the growth and guidance of axons in both the spinal cord and the PNS (By similarity). Major factor for vascular smooth muscle cell.

VSGP/F-spondin Antibody (N-term) - References

- Rose, J. Phd, et al. Mol. Med. (2010) In press :
- Attur, M.G., et al. FASEB J. 23(1):79-89(2009)
- Tan, K., et al. J. Mol. Biol. 381(5):1213-1223(2008)
- Kitagawa, M., et al. Biochem. Biophys. Res. Commun. 349(3):1050-1056(2006)
- Pyle-Chenault, R.A., et al. Tumour Biol. 26(5):245-257(2005)