

ST6GALNAC1 Antibody (N-term)
Affinity Purified Rabbit Polyclonal Antibody (Pab)
Catalog # AP12398a

Specification

ST6GALNAC1 Antibody (N-term) - Product Information

Application	WB,E
Primary Accession	O9NSC7
Other Accession	NP_060884.1
Reactivity	Human
Host	Rabbit
Clonality	Polyclonal
Isotype	Rabbit IgG
Calculated MW	68564
Antigen Region	28-57

ST6GALNAC1 Antibody (N-term) - Additional Information

Gene ID 55808

Other Names

Alpha-N-acetylgalactosaminide alpha-2, 6-sialyltransferase 1, GalNAc alpha-2, 6-sialyltransferase I, ST6GalNAc I, ST6GalNAcI, Sialyltransferase 7A, SIAT7-A, ST6GALNAC1, SIAT7A

Target/Specificity

This ST6GALNAC1 antibody is generated from rabbits immunized with a KLH conjugated synthetic peptide between 28-57 amino acids from the N-terminal region of human ST6GALNAC1.

Dilution

WB~~1:1000

Format

Purified polyclonal antibody supplied in PBS with 0.09% (W/V) sodium azide. This antibody is purified through a protein A column, followed by peptide affinity purification.

Storage

Maintain refrigerated at 2-8°C for up to 2 weeks. For long term storage store at -20°C in small aliquots to prevent freeze-thaw cycles.

Precautions

ST6GALNAC1 Antibody (N-term) is for research use only and not for use in diagnostic or therapeutic procedures.

ST6GALNAC1 Antibody (N-term) - Protein Information

Name ST6GALNAC1 ([HGNC:23614](#))

Synonyms SIAT7A

Function Protein sialyltransferase specifically expressed in goblet cells that plays a key role in intestinal host-commensal homeostasis (PubMed:[35303419](#)). Conjugates sialic acid with an alpha-2-6 linkage to N-acetylgalactosamine (GalNAc) glycan chains linked to serine or threonine in glycoproteins (PubMed:[16319059](#), PubMed:[35303419](#)). Catalyzes the formation of the sialyl-Tn (S-Tn) antigen, an antigen found in intestinal goblet cells, as well as ulcerative colitis (UC) and various cancers (PubMed:[16319059](#), PubMed:[35303419](#)). Protein sialylation in goblet cells is essential for mucus integrity and is required to protect the intestinal mucus against excessive bacterial proteolytic degradation (PubMed:[35303419](#)).

Cellular Location

Golgi apparatus membrane; Single-pass type II membrane protein

Tissue Location

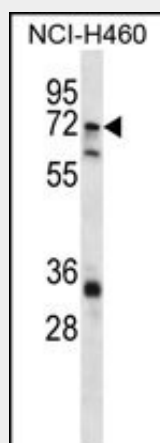
Expression is restricted to the gastrointestinal tract (PubMed:[16319059](#)). Highly expressed in goblet cells (PubMed:[35303419](#)). Also expressed in various tumor cells (PubMed:[16319059](#)).

ST6GALNAC1 Antibody (N-term) - Protocols

Provided below are standard protocols that you may find useful for product applications.

- [Western Blot](#)
- [Blocking Peptides](#)
- [Dot Blot](#)
- [Immunohistochemistry](#)
- [Immunofluorescence](#)
- [Immunoprecipitation](#)
- [Flow Cytometry](#)
- [Cell Culture](#)

ST6GALNAC1 Antibody (N-term) - Images



ST6GALNAC1 Antibody (N-term) (Cat. #AP12398a) western blot analysis in NCI-H460 cell line lysates (35ug/lane). This demonstrates the ST6GALNAC1 antibody detected the ST6GALNAC1 protein (arrow).

ST6GALNAC1 Antibody (N-term) - Background

Glycosylation of proteins affects cell-cell interaction, interactions with the matrix, and the functions of intracellular molecules. ST6GALNAC1 transfers a sialic acid, N-acetylneuraminic

acid (NeuAc), in an alpha-2,6 linkage to O-linked GalNAc residues. The cancer-associated sialyl-Tn (sTn) antigen is formed by ST6GALNAC1-catalyzed sialylation of GalNAc residues on mucins (Ikehara et al., 1999 [PubMed 10536037]; Sewell et al., 2006 [PubMed 16319059]).

ST6GALNAC1 Antibody (N-term) - References

Rose, J.E., et al. Mol. Med. 16 (7-8), 247-253 (2010) :
Hassinen, A., et al. J. Biol. Chem. 285(23):17771-17777(2010)
Patani, N., et al. Cancer Genomics Proteomics 5(6):333-340(2008)
Olsen, J.V., et al. Cell 127(3):635-648(2006)
Olsen, J.V., et al. Cell 127(3):635-648(2006)