

**WNT9A Antibody (Center)**  
**Affinity Purified Rabbit Polyclonal Antibody (Pab)**  
**Catalog # AP12394c**

**Specification**

---

**WNT9A Antibody (Center) - Product Information**

Application	WB,E
Primary Accession	<a href="#">O14904</a>
Other Accession	<a href="#">Q8R5M2</a> , <a href="#">NP_003386.1</a>
Reactivity	Human
Predicted	Mouse
Host	Rabbit
Clonality	Polyclonal
Isotype	Rabbit IgG
Calculated MW	40320
Antigen Region	216-244

**WNT9A Antibody (Center) - Additional Information**

**Gene ID** 7483

**Other Names**

Protein Wnt-9a, Protein Wnt-14, WNT9A, WNT14

**Target/Specificity**

This WNT9A antibody is generated from rabbits immunized with a KLH conjugated synthetic peptide between 216-244 amino acids from the Central region of human WNT9A.

**Dilution**

WB~~1:1000

**Format**

Purified polyclonal antibody supplied in PBS with 0.09% (W/V) sodium azide. This antibody is purified through a protein A column, followed by peptide affinity purification.

**Storage**

Maintain refrigerated at 2-8°C for up to 2 weeks. For long term storage store at -20°C in small aliquots to prevent freeze-thaw cycles.

**Precautions**

WNT9A Antibody (Center) is for research use only and not for use in diagnostic or therapeutic procedures.

**WNT9A Antibody (Center) - Protein Information**

**Name** WNT9A

**Synonyms** WNT14

**Function** Ligand for members of the frizzled family of seven transmembrane receptors. Functions in the canonical Wnt/beta-catenin signaling pathway. Required for normal timing of IHH expression during embryonic bone development, normal chondrocyte maturation and for normal bone mineralization during embryonic bone development. Plays a redundant role in maintaining joint integrity.

**Cellular Location**

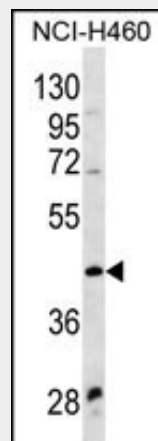
Secreted, extracellular space, extracellular matrix. Secreted

**WNT9A Antibody (Center) - Protocols**

Provided below are standard protocols that you may find useful for product applications.

- [Western Blot](#)
- [Blocking Peptides](#)
- [Dot Blot](#)
- [Immunohistochemistry](#)
- [Immunofluorescence](#)
- [Immunoprecipitation](#)
- [Flow Cytometry](#)
- [Cell Culture](#)

**WNT9A Antibody (Center) - Images**



WNT9A Antibody (Center) (Cat. #AP12394c) western blot analysis in NCI-H460 cell line lysates (35ug/lane). This demonstrates the WNT9A antibody detected the WNT9A protein (arrow).

**WNT9A Antibody (Center) - Background**

The WNT gene family consists of structurally related genes that encode secreted signaling proteins. These proteins have been implicated in oncogenesis and in several developmental processes, including regulation of cell fate and patterning during embryogenesis. This gene is a member of the WNT gene family. It is expressed in gastric cancer cell lines. The protein encoded by this gene shows 75% amino acid identity to chicken Wnt14, which has been shown to play a central role in initiating synovial joint formation in the chick limb. This gene is clustered with another family member, WNT3A, in the chromosome 1q42 region.

**WNT9A Antibody (Center) - References**

- Lee, D.Y., et al. Menopause 17(5):1064-1070(2010)  
Memarian, A., et al. Leuk. Lymphoma 50(12):2061-2070(2009)  
Yerges, L.M., et al. J. Bone Miner. Res. 24(12):2039-2049(2009)  
Xiang, Y., et al. Mol. Biol. Rep. 35(2):73-79(2008)  
Bhattacharyya, S., et al. Dig. Dis. Sci. 52(10):2766-2774(2007)