

ZNF146 Antibody (N-term)
Affinity Purified Rabbit Polyclonal Antibody (Pab)
Catalog # AP12388a

Specification

ZNF146 Antibody (N-term) - Product Information

Application	WB, FC,E
Primary Accession	Q15072
Other Accession	NP_001093109.1 , NP_001093108.1 , NP_009076.2
Reactivity	Human, Mouse
Host	Rabbit
Clonality	Polyclonal
Isotype	Rabbit IgG
Calculated MW	33308
Antigen Region	17-45

ZNF146 Antibody (N-term) - Additional Information

Gene ID 7705

Other Names

Zinc finger protein OZF, Only zinc finger protein, Zinc finger protein 146, ZNF146, OZF

Target/Specificity

This ZNF146 antibody is generated from rabbits immunized with a KLH conjugated synthetic peptide between 17-45 amino acids from the N-terminal region of human ZNF146.

Dilution

WB~~1:1000
FC~~1:10~50

Format

Purified polyclonal antibody supplied in PBS with 0.09% (W/V) sodium azide. This antibody is purified through a protein A column, followed by peptide affinity purification.

Storage

Maintain refrigerated at 2-8°C for up to 2 weeks. For long term storage store at -20°C in small aliquots to prevent freeze-thaw cycles.

Precautions

ZNF146 Antibody (N-term) is for research use only and not for use in diagnostic or therapeutic procedures.

ZNF146 Antibody (N-term) - Protein Information

Name ZNF146

Synonyms OZF

Cellular Location

Nucleus.

Tissue Location

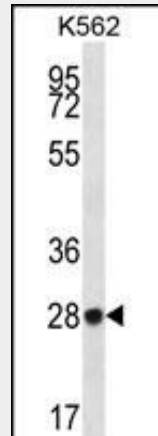
Liver, skeletal and heart muscle, mammary cells. Very low levels in brain, lung, placenta and kidney. Strongly overexpressed in many pancreas and colorectal cancers. Increased gene copy numbers are detected in 3 of 12 tumor cell lines and 2 of 12 primary pancreatic carcinomas. Overexpressed in 80% of colorectal cancers.

ZNF146 Antibody (N-term) - Protocols

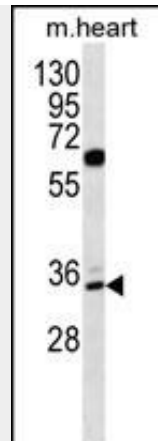
Provided below are standard protocols that you may find useful for product applications.

- [Western Blot](#)
- [Blocking Peptides](#)
- [Dot Blot](#)
- [Immunohistochemistry](#)
- [Immunofluorescence](#)
- [Immunoprecipitation](#)
- [Flow Cytometry](#)
- [Cell Culture](#)

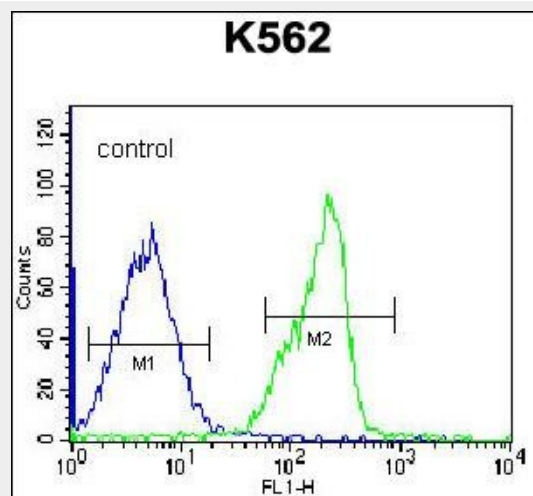
ZNF146 Antibody (N-term) - Images



ZNF146 Antibody (N-term) (Cat. #AP12388a) western blot analysis in K562 cell line lysates (35ug/lane). This demonstrates the ZNF146 antibody detected the ZNF146 protein (arrow).



ZNF146 Antibody (N-term) (Cat. #AP12388a) western blot analysis in mouse heart tissue lysates (35ug/lane). This demonstrates the ZNF146 antibody detected the ZNF146 protein (arrow).



ZNF146 Antibody (N-term) (Cat. #AP12388a) flow cytometric analysis of K562 cells (right histogram) compared to a negative control cell (left histogram). FITC-conjugated goat-anti-rabbit secondary antibodies were used for the analysis.

ZNF146 Antibody (N-term) - Background

The ZNF146 protein is a 33 kDa Kruppel protein, composed solely of 10 zinc finger motifs. ZNF146 overexpression in tumours may alter the balance between hRap1 and other telomeric proteins; therefore ZNF146 function may be linked to telomere regulation. ZNF146 is strongly overexpressed in many pancreas and colorectal cancers. Increased gene copy numbers are detected in 3 of 12 tumor cell lines and 2 of 12 primary pancreatic carcinomas. ZNF146 is overexpressed in 80% of colorectal cancers.

ZNF146 Antibody (N-term) - References

- Antoine, K., et al. J. Cell. Biochem. 95(4):763-768(2005)
- Antoine, K., et al. Mol. Cell. Biochem. 271 (1-2), 215-223 (2005) :
- Grimwood, J., et al. Nature 428(6982):529-535(2004)
- Ferbus, D., et al. J. Pathol. 200(2):177-182(2003)
- Pibouin, L., et al. Cytogenet. Cell Genet. 92 (1-2), 80-84 (2001) :