

MST1 Antibody (C-term)
Affinity Purified Rabbit Polyclonal Antibody (Pab)
Catalog # AP12352B

Specification

MST1 Antibody (C-term) - Product Information

Application	WB, IHC-P, FC,E
Primary Accession	P26927
Other Accession	Q2TV78 , NP_066278.3
Reactivity	Human
Host	Rabbit
Clonality	Polyclonal
Isotype	Rabbit IgG
Calculated MW	80320
Antigen Region	454-483

MST1 Antibody (C-term) - Additional Information

Gene ID 4485

Other Names

Hepatocyte growth factor-like protein, Macrophage stimulatory protein, Macrophage-stimulating protein, MSP, Hepatocyte growth factor-like protein alpha chain, Hepatocyte growth factor-like protein beta chain, MST1, D3F15S2, DNF15S2, HGFL

Target/Specificity

This MST1 antibody is generated from rabbits immunized with a KLH conjugated synthetic peptide between 454-483 amino acids from the C-terminal region of human MST1.

Dilution

WB~~1:1000
IHC-P~~1:10~50
FC~~1:10~50

Format

Purified polyclonal antibody supplied in PBS with 0.09% (W/V) sodium azide. This antibody is purified through a protein A column, followed by peptide affinity purification.

Storage

Maintain refrigerated at 2-8°C for up to 2 weeks. For long term storage store at -20°C in small aliquots to prevent freeze-thaw cycles.

Precautions

MST1 Antibody (C-term) is for research use only and not for use in diagnostic or therapeutic procedures.

MST1 Antibody (C-term) - Protein Information

Name MST1

Synonyms D3F15S2, DNF15S2, HGFL

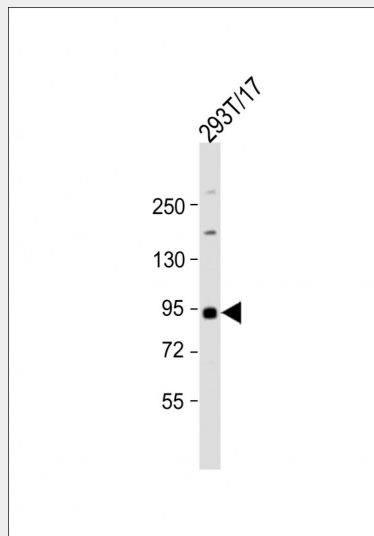
Cellular Location
Secreted.

MST1 Antibody (C-term) - Protocols

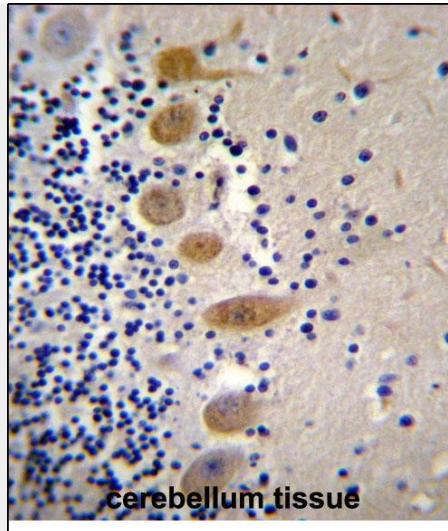
Provided below are standard protocols that you may find useful for product applications.

- [Western Blot](#)
- [Blocking Peptides](#)
- [Dot Blot](#)
- [Immunohistochemistry](#)
- [Immunofluorescence](#)
- [Immunoprecipitation](#)
- [Flow Cytometry](#)
- [Cell Culture](#)

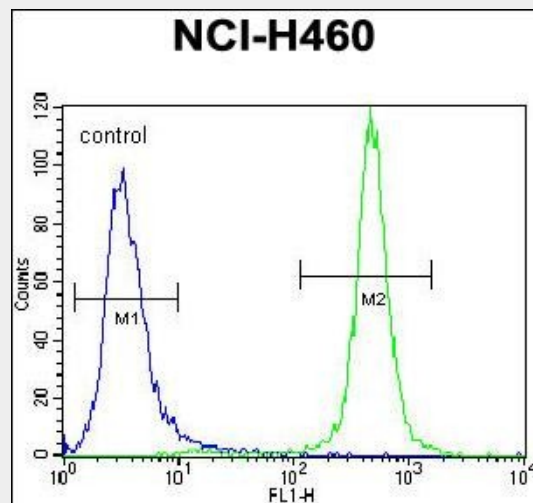
MST1 Antibody (C-term) - Images



Anti-MST1 Antibody (C-term) at 1:1000 dilution + 293T/17 whole cell lysate Lysates/proteins at 20 µg per lane. Secondary Goat Anti-Rabbit IgG, (H+L), Peroxidase conjugated at 1/10000 dilution. Predicted band size : 80 kDa Blocking/Dilution buffer: 5% NFDM/TBST.



MST1 Antibody (C-term) (Cat. #AP12352b) immunohistochemistry analysis in formalin fixed and paraffin embedded human cerebellum tissue followed by peroxidase conjugation of the secondary antibody and DAB staining. This data demonstrates the use of MST1 Antibody (C-term) for immunohistochemistry. Clinical relevance has not been evaluated.



MST1 Antibody (C-term) (Cat. #AP12352b) flow cytometric analysis of NCI-H460 cells (right histogram) compared to a negative control cell (left histogram). FITC-conjugated goat-anti-rabbit secondary antibodies were used for the analysis.

MST1 Antibody (C-term) - Background

The protein encoded by this gene contains four kringle domains and a serine protease domain, similar to that found in hepatic growth factor. Despite the presence of the serine protease domain, the encoded protein may not have any proteolytic activity. The receptor for this protein is RON tyrosine kinase, which upon activation stimulates ciliary motility of ciliated epithelial lung cells. This protein is secreted and cleaved to form an alpha chain and a beta chain bridged by disulfide bonds.

MST1 Antibody (C-term) - References

- Latiano, A., et al. *Inflamm. Bowel Dis.* 16(7):1108-1117(2010)
- Morgan, A.R., et al. *Hum. Immunol.* 71(6):602-609(2010)

Qiao, M., et al. Mol. Cell 38(4):512-523(2010)
McGovern, D.P., et al. Nat. Genet. 42(4):332-337(2010)
Oh, H.J., et al. Curr. Biol. 20(5):416-422(2010)