

CHST6 Antibody (C-term)
Affinity Purified Rabbit Polyclonal Antibody (Pab)
Catalog # AP12350B

Specification

CHST6 Antibody (C-term) - Product Information

Application	WB, IHC-P,E
Primary Accession	O9GZX3
Other Accession	NP_067628.1
Reactivity	Human
Host	Rabbit
Clonality	Polyclonal
Isotype	Rabbit IgG
Calculated MW	44099
Antigen Region	296-325

CHST6 Antibody (C-term) - Additional Information

Gene ID 4166

Other Names

Carbohydrate sulfotransferase 6, 282-, Corneal N-acetylglucosamine-6-O-sulfotransferase, C-GlcNAc6ST, hCGn6ST, Galactose/N-acetylglucosamine/N-acetylglucosamine 6-O-sulfotransferase 4-beta, GST4-beta, N-acetylglucosamine 6-O-sulfotransferase 5, GlcNAc6ST-5, Gn6st-5, CHST6

Target/Specificity

This CHST6 antibody is generated from rabbits immunized with a KLH conjugated synthetic peptide between 296-325 amino acids from the C-terminal region of human CHST6.

Dilution

WB~~1:1000
IHC-P~~1:10~50

Format

Purified polyclonal antibody supplied in PBS with 0.09% (W/V) sodium azide. This antibody is purified through a protein A column, followed by peptide affinity purification.

Storage

Maintain refrigerated at 2-8°C for up to 2 weeks. For long term storage store at -20°C in small aliquots to prevent freeze-thaw cycles.

Precautions

CHST6 Antibody (C-term) is for research use only and not for use in diagnostic or therapeutic procedures.

CHST6 Antibody (C-term) - Protein Information

Name CHST6 ([HGNC:6938](#))

Function Sulfotransferase that utilizes 3'-phospho-5'-adenylyl sulfate (PAPS) as sulfonate donor to catalyze the transfer of sulfate to position 6 of non-reducing N-acetylglucosamine (GlcNAc) residues of keratan (PubMed:[11278593](#), PubMed:[11352640](#), PubMed:[12218059](#), PubMed:[17690104](#)). Cooperates with B4GALT4 galactosyltransferase and B3GNT7 N-acetylglucosaminyltransferase to construct and elongate the sulfated disaccharide unit [->3Galbeta1->4(6-sulfoGlcNAcbeta)1->] within keratan sulfate polymer. Involved in biosynthesis of keratan sulfate in cornea, with an impact on proteoglycan fibril organization and corneal transparency (PubMed:[11278593](#), PubMed:[12218059](#), PubMed:[17690104](#)). Involved in sulfation of endothelial mucins such as GLYCAM1 (PubMed:[11352640](#)).

Cellular Location

Golgi apparatus membrane; Single-pass type II membrane protein

Tissue Location

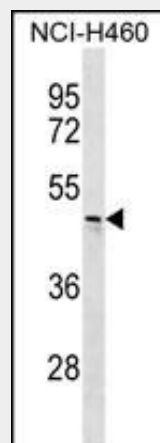
Expressed in cornea. Mainly expressed in brain. Also expressed in spinal cord and trachea

CHST6 Antibody (C-term) - Protocols

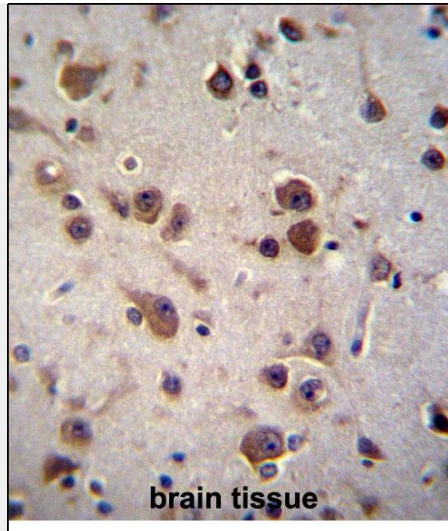
Provided below are standard protocols that you may find useful for product applications.

- [Western Blot](#)
- [Blocking Peptides](#)
- [Dot Blot](#)
- [Immunohistochemistry](#)
- [Immunofluorescence](#)
- [Immunoprecipitation](#)
- [Flow Cytometry](#)
- [Cell Culture](#)

CHST6 Antibody (C-term) - Images



CHST6 Antibody (C-term) (Cat. #AP12350b) western blot analysis in NCI-H460 cell line lysates (35ug/lane). This demonstrates the CHST6 antibody detected the CHST6 protein (arrow).



CHST6 Antibody (C-term) (Cat. #AP12350b) immunohistochemistry analysis in formalin fixed and paraffin embedded human brain tissue followed by peroxidase conjugation of the secondary antibody and DAB staining. This data demonstrates the use of CHST6 Antibody (C-term) for immunohistochemistry. Clinical relevance has not been evaluated.

CHST6 Antibody (C-term) - Background

The protein encoded by this gene is an enzyme that catalyzes the transfer of a sulfate group to the GlcNAc residues of keratan. Keratan sulfate helps maintain corneal transparency. Defects in this gene are a cause of macular corneal dystrophy (MCD).

CHST6 Antibody (C-term) - References

- Liu, Z., et al. Cornea 29(8):883-888(2010)
- Dastani, Z., et al. Eur. J. Hum. Genet. 18(3):342-347(2010)
- Dang, X., et al. Mol. Vis. 15, 700-705 (2009) :
- Birgani, S.A., et al. Mol. Vis. 15, 373-377 (2009) :
- Sultana, A., et al. Mol. Vis. 15, 319-325 (2009) :