

**TGFB1 Antibody (N-term)**  
**Affinity Purified Rabbit Polyclonal Antibody (Pab)**  
**Catalog # AP12348A**

**Specification**

---

**TGFB1 Antibody (N-term) - Product Information**

Application	WB,E
Primary Accession	<a href="#">P01137</a>
Other Accession	<a href="#">P17246</a> , <a href="#">P07200</a> , <a href="#">P04202</a> , <a href="#">P18341</a> , <a href="#">NP_000651.3</a> , <a href="#">O19011</a>
Reactivity	Human, Mouse
Predicted	Bovine, Horse, Pig, Rat
Host	Rabbit
Clonality	Polyclonal
Isotype	Rabbit IgG
Antigen Region	30-50

**TGFB1 Antibody (N-term) - Additional Information**

**Gene ID** 7040

**Other Names**

Transforming growth factor beta-1, TGF-beta-1, Latency-associated peptide, LAP, TGFB1, TGFB

**Target/Specificity**

This TGFB1 antibody is generated from rabbits immunized with a KLH conjugated synthetic peptide between 30-50 amino acids of human TGFB1.

**Dilution**

WB~~1:2000

**Format**

Purified polyclonal antibody supplied in PBS with 0.09% (W/V) sodium azide. This antibody is purified through a protein A column, followed by peptide affinity purification.

**Storage**

Maintain refrigerated at 2-8°C for up to 2 weeks. For long term storage store at -20°C in small aliquots to prevent freeze-thaw cycles.

**Precautions**

TGFB1 Antibody (N-term) is for research use only and not for use in diagnostic or therapeutic procedures.

**TGFB1 Antibody (N-term) - Protein Information**

**Name** TGFB1 ([HGNC:11766](#))

**Synonyms** TGFB

**Function** Transforming growth factor beta-1 proprotein: Precursor of the Latency-associated peptide (LAP) and Transforming growth factor beta-1 (TGF-beta-1) chains, which constitute the regulatory and active subunit of TGF-beta-1, respectively.

#### Cellular Location

[Latency-associated peptide]: Secreted, extracellular space, extracellular matrix

#### Tissue Location

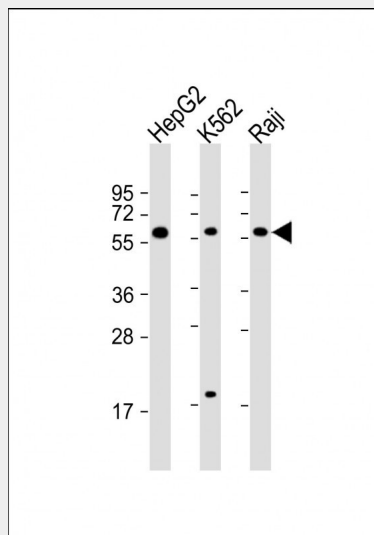
Highly expressed in bone (PubMed:11746498, PubMed:17827158). Abundantly expressed in articular cartilage and chondrocytes and is increased in osteoarthritis (OA) (PubMed:11746498, PubMed:17827158). Colocalizes with ASPN in chondrocytes within OA lesions of articular cartilage (PubMed:17827158)

### TGFB1 Antibody (N-term) - Protocols

Provided below are standard protocols that you may find useful for product applications.

- [Western Blot](#)
- [Blocking Peptides](#)
- [Dot Blot](#)
- [Immunohistochemistry](#)
- [Immunofluorescence](#)
- [Immunoprecipitation](#)
- [Flow Cytometry](#)
- [Cell Culture](#)

### TGFB1 Antibody (N-term) - Images



All lanes : Anti-TGFB1 Antibody (N-term) at 1:2000 dilution Lane 1: HepG2 whole cell lysate Lane 2: K562 whole cell lysate Lane 3: Raji whole cell lysate Lysates/proteins at 20 µg per lane. Secondary Goat Anti-Rabbit IgG, (H+L), Peroxidase conjugated at 1/10000 dilution. Predicted band size : 44 kDa Blocking/Dilution buffer: 5% NFDM/TBST.

### TGFB1 Antibody (N-term) - Background

TGFB1 is a member of the transforming growth factor beta (TGFB) family of cytokines, which are multifunctional peptides that regulate proliferation, differentiation, adhesion, migration, and other

functions in many cell types. Many cells have TGF $\beta$  receptors, and the protein positively and negatively regulates many other growth factors. The secreted protein is cleaved into a latency-associated peptide (LAP) and a mature TGF $\beta$ 1 peptide, and is found in either a latent form composed of a TGF $\beta$ 1 homodimer, a LAP homodimer, and a latent TGF $\beta$ 1-binding protein, or in an active form composed of a TGF $\beta$ 1 homodimer. The mature peptide may also form heterodimers with other TGF $\beta$  family members. This gene is frequently upregulated in tumor cells, and mutations in this gene result in Camurati-Engelmann disease.

#### **TGF $\beta$ 1 Antibody (N-term) - References**

Perez, A.B., et al. Hum. Immunol. 71(11):1135-1140(2010) Xu, Z., et al. Biochem. Biophys. Res. Commun. 401(3):376-381(2010) Bran, G.M., et al. Anticancer Res. 30(9):3459-3463(2010) Zauli, G., et al. Blood 80(12):3036-3043(1992) Wrana, J.L., et al. Cell 71(6):1003-1014(1992)

#### **TGF $\beta$ 1 Antibody (N-term) - Citations**

- [Anti-epileptic drug topiramate upregulates TGF \$\beta\$ 1 and SOX9 expression in primary embryonic palatal mesenchyme cells: Implications for teratogenicity](#)
- [Identification and analysis of key genes associated with ulcerative colitis based on DNA microarray data.](#)
- [CTGF siRNA ameliorates tubular cell apoptosis and tubulointerstitial fibrosis in obstructed mouse kidneys in a Sirt1-independent manner.](#)