

**ACTN3 Antibody (Center)**  
**Affinity Purified Rabbit Polyclonal Antibody (Pab)**  
**Catalog # AP12327c**

**Specification**

---

**ACTN3 Antibody (Center) - Product Information**

Application	WB, IHC-P,E
Primary Accession	<a href="#">Q08043</a>
Other Accession	<a href="#">NP_001095.1</a>
Reactivity	Human
Host	Rabbit
Clonality	Polyclonal
Isotype	Rabbit IgG
Calculated MW	103241
Antigen Region	409-437

**ACTN3 Antibody (Center) - Additional Information**

**Gene ID** 89

**Other Names**

Alpha-actinin-3, Alpha-actinin skeletal muscle isoform 3, F-actin cross-linking protein, ACTN3

**Target/Specificity**

This ACTN3 antibody is generated from rabbits immunized with a KLH conjugated synthetic peptide between 409-437 amino acids from the Central region of human ACTN3.

**Dilution**

WB~~1:1000  
IHC-P~~1:10~50

**Format**

Purified polyclonal antibody supplied in PBS with 0.09% (W/V) sodium azide. This antibody is purified through a protein A column, followed by peptide affinity purification.

**Storage**

Maintain refrigerated at 2-8°C for up to 2 weeks. For long term storage store at -20°C in small aliquots to prevent freeze-thaw cycles.

**Precautions**

ACTN3 Antibody (Center) is for research use only and not for use in diagnostic or therapeutic procedures.

**ACTN3 Antibody (Center) - Protein Information**

**Name** ACTN3

**Function** F-actin cross-linking protein which is thought to anchor actin to a variety of intracellular

structures. This is a bundling protein.

#### Tissue Location

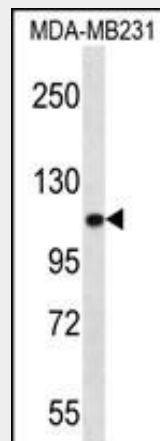
Expression restricted to fast (type 2) skeletal muscle fibers (at protein level).

#### ACTN3 Antibody (Center) - Protocols

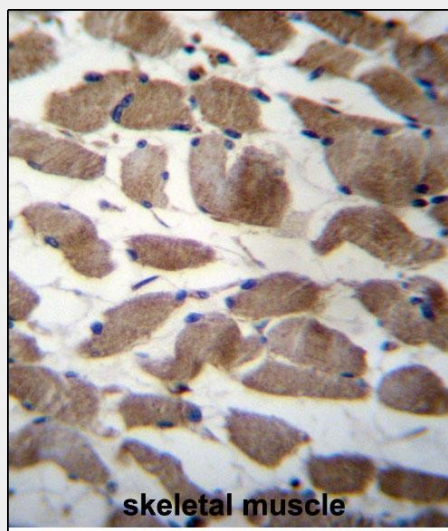
Provided below are standard protocols that you may find useful for product applications.

- [Western Blot](#)
- [Blocking Peptides](#)
- [Dot Blot](#)
- [Immunohistochemistry](#)
- [Immunofluorescence](#)
- [Immunoprecipitation](#)
- [Flow Cytometry](#)
- [Cell Culture](#)

#### ACTN3 Antibody (Center) - Images



ACTN3 Antibody (Center) (Cat. #AP12327c) western blot analysis in MDA-MB231 cell line lysates (35ug/lane). This demonstrates the ACTN3 antibody detected the ACTN3 protein (arrow).



ACTN3 Antibody (Center) (Cat. #AP12327c) immunohistochemistry analysis in formalin fixed and paraffin embedded human skeletal muscle followed by peroxidase conjugation of the secondary antibody and DAB staining. This data demonstrates the use of ACTN3 Antibody (Center) for immunohistochemistry. Clinical relevance has not been evaluated.

#### **ACTN3 Antibody (Center) - Background**

Alpha-actinin is an actin-binding protein with multiple roles in different cell types. This gene expression is limited to skeletal muscle. It is localized to the Z-disc and analogous dense bodies, where it helps to anchor the myofibrillar actin filaments

#### **ACTN3 Antibody (Center) - References**

Rodriguez-Romo, G., et al. Eur. J. Appl. Physiol. 110(6):1099-1106(2010)  
Bailey, S.D., et al. Diabetes Care 33(10):2250-2253(2010)  
Berman, Y., et al. Physiology (Bethesda) 25(4):250-259(2010)  
Ruiz, J.R., et al. Scand J Med Sci Sports (2010) In press :  
Buxens, A., et al. Scand J Med Sci Sports (2010) In press :