

**SFRS7 Antibody (N-term)**  
**Affinity Purified Rabbit Polyclonal Antibody (Pab)**  
**Catalog # AP12306a**

**Specification**

---

**SFRS7 Antibody (N-term) - Product Information**

Application	WB, IHC-P,E
Primary Accession	<a href="#">Q16629</a>
Other Accession	<a href="#">Q8BL97</a> , <a href="#">Q3T106</a> , <a href="#">NP_001026854.1</a>
Reactivity	Human
Predicted	Bovine, Mouse
Host	Rabbit
Clonality	Polyclonal
Isotype	Rabbit IgG
Calculated MW	27367
Antigen Region	69-98

**SFRS7 Antibody (N-term) - Additional Information**

**Gene ID** 6432

**Other Names**

Serine/arginine-rich splicing factor 7, Splicing factor 9G8, Splicing factor, arginine/serine-rich 7, SRSF7, SFRS7

**Target/Specificity**

This SFRS7 antibody is generated from rabbits immunized with a KLH conjugated synthetic peptide between 69-98 amino acids from the N-terminal region of human SFRS7.

**Dilution**

WB~~1:1000  
IHC-P~~1:10~50

**Format**

Purified polyclonal antibody supplied in PBS with 0.09% (W/V) sodium azide. This antibody is purified through a protein A column, followed by peptide affinity purification.

**Storage**

Maintain refrigerated at 2-8°C for up to 2 weeks. For long term storage store at -20°C in small aliquots to prevent freeze-thaw cycles.

**Precautions**

SFRS7 Antibody (N-term) is for research use only and not for use in diagnostic or therapeutic procedures.

**SFRS7 Antibody (N-term) - Protein Information**

**Name** SRSF7

## Synonyms SFRS7

**Function** Required for pre-mRNA splicing. Can also modulate alternative splicing in vitro. Represses the splicing of MAPT/Tau exon 10. May function as export adapter involved in mRNA nuclear export such as of histone H2A. Binds mRNA which is thought to be transferred to the NXF1- NXT1 heterodimer for export (TAP/NXF1 pathway); enhances NXF1-NXT1 RNA- binding activity. RNA-binding is semi-sequence specific.

## Cellular Location

Nucleus. Cytoplasm

## Tissue Location

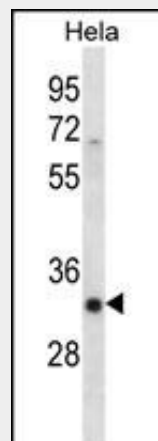
Brain, liver, kidney and lung.

## SFRS7 Antibody (N-term) - Protocols

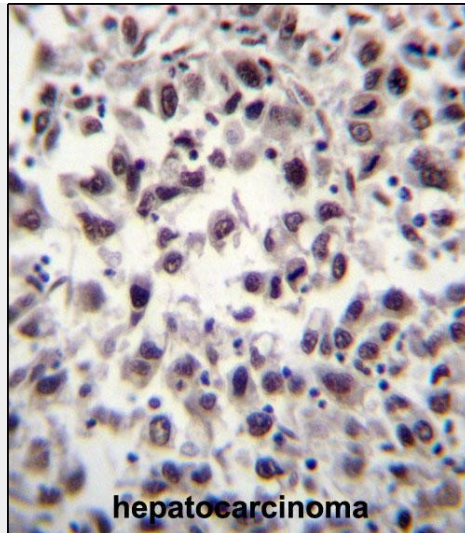
Provided below are standard protocols that you may find useful for product applications.

- [Western Blot](#)
- [Blocking Peptides](#)
- [Dot Blot](#)
- [Immunohistochemistry](#)
- [Immunofluorescence](#)
- [Immunoprecipitation](#)
- [Flow Cytometry](#)
- [Cell Culture](#)

## SFRS7 Antibody (N-term) - Images



SFRS7 Antibody (N-term) (Cat. #AP12306a) western blot analysis in HeLa cell line lysates (35ug/lane). This demonstrates the SFRS7 antibody detected the SFRS7 protein (arrow).



SFRS7 Antibody (N-term) (Cat. #AP12306a) immunohistochemistry analysis in formalin fixed and paraffin embedded human hepatocarcinoma tissue followed by peroxidase conjugation of the secondary antibody and DAB staining. This data demonstrates the use of SFRS7 Antibody (N-term) for immunohistochemistry. Clinical relevance has not been evaluated.

#### **SFRS7 Antibody (N-term) - Background**

The protein encoded by this gene is a member of the serine/arginine (SR)-rich family of pre-mRNA splicing factors, which constitute part of the spliceosome. Each of these factors contains an RNA recognition motif (RRM) for binding RNA and an RS domain for binding other proteins. The RS domain is rich in serine and arginine residues and facilitates interaction between different SR splicing factors. In addition to being critical for mRNA splicing, the SR proteins have also been shown to be involved in mRNA export from the nucleus and in translation. Two transcript variants encoding different isoforms have been found for this gene.

#### **SFRS7 Antibody (N-term) - References**

Kimura, T., et al. *Med Mol Morphol* 43(3):145-157(2010)  
Escudero-Paunetto, L., et al. *Virology* 401(2):155-164(2010)  
Manley, J.L., et al. *Genes Dev.* 24(11):1073-1074(2010)  
Valente, S.T., et al. *Mol. Cell* 36(2):279-289(2009)  
Shepard, P.J., et al. *Genome Biol.* 10 (10), 242 (2009) :

#### **SFRS7 Antibody (N-term) - Citations**

- [SRSF7 knockdown promotes apoptosis of colon and lung cancer cells.](#)