

GRIN3B Antibody (C-term)
Affinity Purified Rabbit Polyclonal Antibody (Pab)
Catalog # AP12291b

Specification

GRIN3B Antibody (C-term) - Product Information

Application	WB, IHC-P,E
Primary Accession	O60391
Other Accession	NP_619635.1
Reactivity	Human
Host	Rabbit
Clonality	Polyclonal
Isotype	Rabbit IgG
Antigen Region	904-933

GRIN3B Antibody (C-term) - Additional Information

Gene ID 116444

Other Names

Glutamate receptor ionotropic, NMDA 3B, GluN3B, N-methyl-D-aspartate receptor subtype 3B, NMDAR3B, NR3B, GRIN3B

Target/Specificity

This GRIN3B antibody is generated from rabbits immunized with a KLH conjugated synthetic peptide between 904-933 amino acids from the C-terminal region of human GRIN3B.

Dilution

WB~~1:1000
IHC-P~~1:10~50

Format

Purified polyclonal antibody supplied in PBS with 0.09% (W/V) sodium azide. This antibody is purified through a protein A column, followed by peptide affinity purification.

Storage

Maintain refrigerated at 2-8°C for up to 2 weeks. For long term storage store at -20°C in small aliquots to prevent freeze-thaw cycles.

Precautions

GRIN3B Antibody (C-term) is for research use only and not for use in diagnostic or therapeutic procedures.

GRIN3B Antibody (C-term) - Protein Information

Name GRIN3B

Function NMDA receptor subtype of glutamate-gated ion channels with reduced single-channel

conductance, low calcium permeability and low voltage-dependent sensitivity to magnesium. Mediated by glycine.

Cellular Location

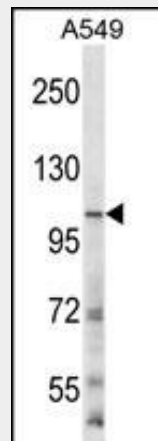
Cell membrane; Multi-pass membrane protein. Postsynaptic cell membrane Note=Requires the presence of GRIN1 to be targeted at the plasma membrane.

GRIN3B Antibody (C-term) - Protocols

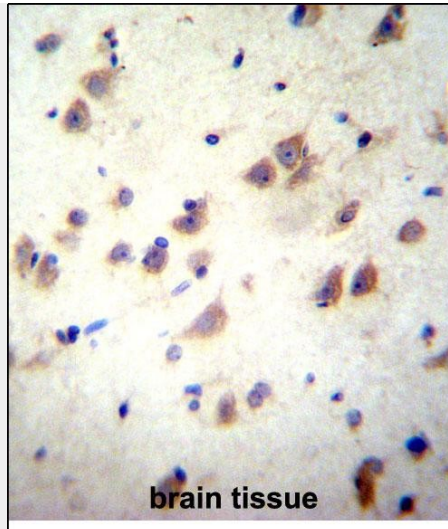
Provided below are standard protocols that you may find useful for product applications.

- [Western Blot](#)
- [Blocking Peptides](#)
- [Dot Blot](#)
- [Immunohistochemistry](#)
- [Immunofluorescence](#)
- [Immunoprecipitation](#)
- [Flow Cytometry](#)
- [Cell Culture](#)

GRIN3B Antibody (C-term) - Images



GRIN3B Antibody (C-term) (Cat. #AP12291b) western blot analysis in A549 cell line lysates (35ug/lane). This demonstrates the GRIN3B antibody detected the GRIN3B protein (arrow).



GRIN3B Antibody (C-term) (Cat. #AP12291b) immunohistochemistry analysis in formalin fixed and paraffin embedded human brain tissue followed by peroxidase conjugation of the secondary antibody and DAB staining. This data demonstrates the use of GRIN3B Antibody (C-term) for immunohistochemistry. Clinical relevance has not been evaluated.

GRIN3B Antibody (C-term) - Background

GRIN3B is a NMDA receptor subtype of glutamate-gated ion channels with reduced single-channel conductance, low calcium permeability and low voltage-dependent sensitivity to magnesium. It is mediated by glycine.

GRIN3B Antibody (C-term) - References

Sedaghati, M., et al. Eur. J. Pharmacol. 633 (1-3), 50-54 (2010) :
Saus, E., et al. J Psychiatr Res (2010) In press :
Need, A.C., et al. Eur. J. Hum. Genet. 17(7):946-957(2009)
Liu, H.P., et al. Dement Geriatr Cogn Disord 28(6):521-527(2009)
Niemann, S., et al. Neurology 70(9):666-676(2008)

GRIN3B Antibody (C-term) - Citations

- [A Naturally Occurring Null Variant of the NMDA Type Glutamate Receptor NR3B Subunit Is a Risk Factor of Schizophrenia.](#)