

FSD2 Antibody (N-term)
Affinity Purified Rabbit Polyclonal Antibody (Pab)
Catalog # AP12280A

Specification

FSD2 Antibody (N-term) - Product Information

Application	WB, IHC-P,E
Primary Accession	A1L4K1
Other Accession	NP_001007123.1
Reactivity	Human
Host	Rabbit
Clonality	Polyclonal
Isotype	Rabbit IgG
Calculated MW	85385
Antigen Region	61-89

FSD2 Antibody (N-term) - Additional Information

Gene ID 123722

Other Names

Fibronectin type III and SPRY domain-containing protein 2, SPRY domain-containing protein 1, FSD2, SPRYD1

Target/Specificity

This FSD2 antibody is generated from rabbits immunized with a KLH conjugated synthetic peptide between 61-89 amino acids from the N-terminal region of human FSD2.

Dilution

WB~~1:1000
IHC-P~~1:10~50

Format

Purified polyclonal antibody supplied in PBS with 0.09% (W/V) sodium azide. This antibody is purified through a protein A column, followed by peptide affinity purification.

Storage

Maintain refrigerated at 2-8°C for up to 2 weeks. For long term storage store at -20°C in small aliquots to prevent freeze-thaw cycles.

Precautions

FSD2 Antibody (N-term) is for research use only and not for use in diagnostic or therapeutic procedures.

FSD2 Antibody (N-term) - Protein Information

Name FSD2

Synonyms SPRYD1

Cellular Location

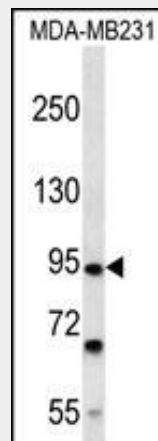
Nucleus {ECO:0000250|UniProtKB:H0UZ81}. Sarcoplasmic reticulum {ECO:0000250|UniProtKB:H0UZ81}. Cytoplasm, perinuclear region {ECO:0000250|UniProtKB:H0UZ81}. Note=In skeletal muscles and striated muscles flanks Z-disks. Partially colocalizes with RYR2 in the sarcoplasmic reticulum. {ECO:0000250|UniProtKB:H0UZ81}

FSD2 Antibody (N-term) - Protocols

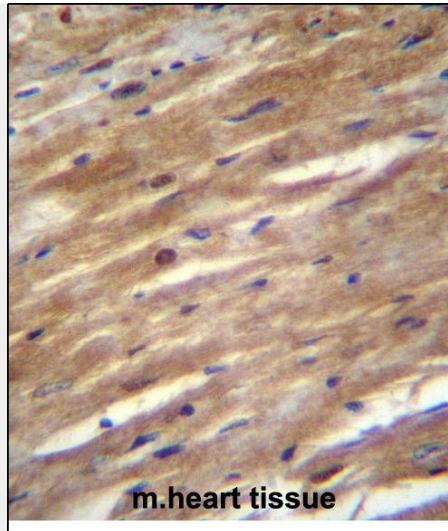
Provided below are standard protocols that you may find useful for product applications.

- [Western Blot](#)
- [Blocking Peptides](#)
- [Dot Blot](#)
- [Immunohistochemistry](#)
- [Immunofluorescence](#)
- [Immunoprecipitation](#)
- [Flow Cytometry](#)
- [Cell Culture](#)

FSD2 Antibody (N-term) - Images



FSD2 Antibody (N-term) (Cat. #AP12280a) western blot analysis in MDA-MB231 cell line lysates (35ug/lane). This demonstrates the FSD2 antibody detected the FSD2 protein (arrow).



FSD2 Antibody (N-term) (Cat. #AP12280a) immunohistochemistry analysis in formalin fixed and paraffin embedded mouse heart tissue followed by peroxidase conjugation of the secondary antibody and DAB staining. This data demonstrates the use of FSD2 Antibody (N-term) for immunohistochemistry. Clinical relevance has not been evaluated.

FSD2 Antibody (N-term) - References

Ota, T., et al. Nat. Genet. 36(1):40-45(2004)

Strausberg, R.L., et al. Proc. Natl. Acad. Sci. U.S.A. 99(26):16899-16903(2002)