

STX5 Antibody (Center)
Affinity Purified Rabbit Polyclonal Antibody (Pab)
Catalog # AP12268c

Specification

STX5 Antibody (Center) - Product Information

Application	WB,E
Primary Accession	O13190
Other Accession	O08DB5 , NP_003155.2
Reactivity	Human, Mouse
Predicted	Bovine
Host	Rabbit
Clonality	Polyclonal
Isotype	Rabbit IgG
Calculated MW	39673
Antigen Region	180-209

STX5 Antibody (Center) - Additional Information

Gene ID 6811

Other Names

Syntaxin-5, STX5, STX5A

Target/Specificity

This STX5 antibody is generated from rabbits immunized with a KLH conjugated synthetic peptide between 180-209 amino acids from the Central region of human STX5.

Dilution

WB~~1:1000

Format

Purified polyclonal antibody supplied in PBS with 0.09% (W/V) sodium azide. This antibody is purified through a protein A column, followed by peptide affinity purification.

Storage

Maintain refrigerated at 2-8°C for up to 2 weeks. For long term storage store at -20°C in small aliquots to prevent freeze-thaw cycles.

Precautions

STX5 Antibody (Center) is for research use only and not for use in diagnostic or therapeutic procedures.

STX5 Antibody (Center) - Protein Information

Name STX5

Synonyms STX5A

Function Mediates endoplasmic reticulum to Golgi transport. Together with p115/USO1 and GM130/GOLGA2, involved in vesicle tethering and fusion at the cis-Golgi membrane to maintain the stacked and inter- connected structure of the Golgi apparatus.

Cellular Location

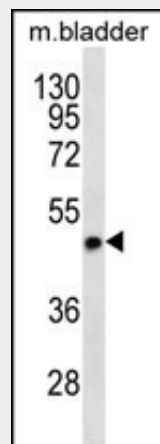
Endoplasmic reticulum-Golgi intermediate compartment membrane {ECO:0000250|UniProtKB:Q08851}; Single-pass type IV membrane protein. Golgi apparatus membrane. Note=Localizes throughout the Golgi apparatus, but most abundant in the cis-most cisternae

STX5 Antibody (Center) - Protocols

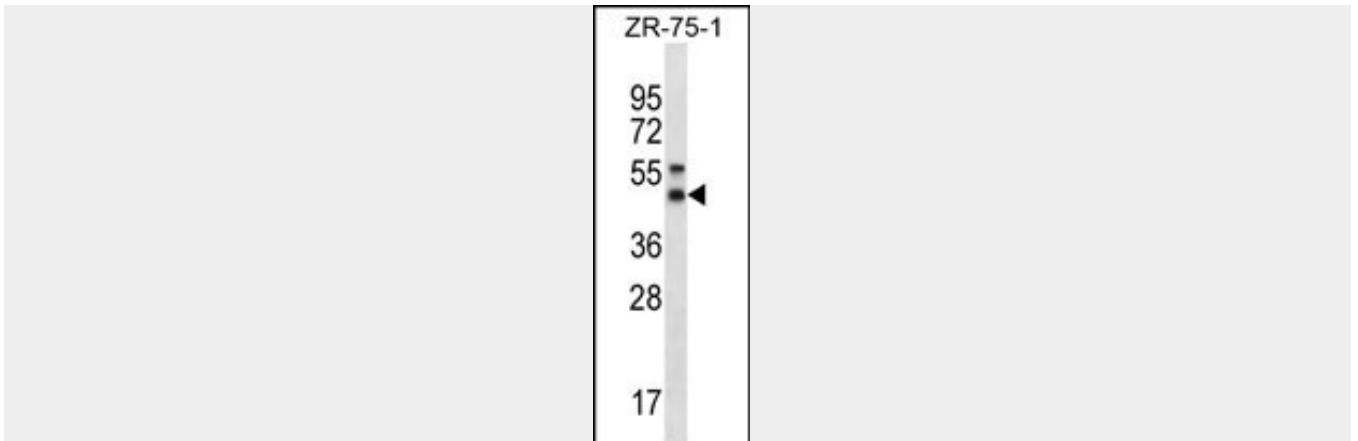
Provided below are standard protocols that you may find useful for product applications.

- [Western Blot](#)
- [Blocking Peptides](#)
- [Dot Blot](#)
- [Immunohistochemistry](#)
- [Immunofluorescence](#)
- [Immunoprecipitation](#)
- [Flow Cytometry](#)
- [Cell Culture](#)

STX5 Antibody (Center) - Images



STX5 Antibody (Center) (Cat. #AP12268c) western blot analysis in mouse bladder tissue lysates (35ug/lane). This demonstrates the STX5 antibody detected the STX5 protein (arrow).



STX5 Antibody (Center) (Cat. #AP12268c) western blot analysis in ZR-75-1 cell line lysates (35ug/lane). This demonstrates the STX5 antibody detected the STX5 protein (arrow).

STX5 Antibody (Center) - Background

STX5 mediates endoplasmic reticulum to Golgi transport (By similarity).

STX5 Antibody (Center) - References

- Laufman, O., et al. EMBO J. 28(14):2006-2017(2009)
- Diao, A., et al. J. Biol. Chem. 283(11):6957-6967(2008)
- Amessou, M., et al. J. Cell. Sci. 120 (PT 8), 1457-1468 (2007) :
- Wang, A.G., et al. Biochem. Biophys. Res. Commun. 345(3):1022-1032(2006)
- Suga, K., et al. FEBS Lett. 579(20):4226-4234(2005)