

TOE1 Antibody (N-term)
Affinity Purified Rabbit Polyclonal Antibody (Pab)
Catalog # AP12267a

Specification

TOE1 Antibody (N-term) - Product Information

Application	WB,E
Primary Accession	O96GM8
Other Accession	NP_079353.3
Reactivity	Human
Host	Rabbit
Clonality	Polyclonal
Isotype	Rabbit IgG
Calculated MW	56548
Antigen Region	90-117

TOE1 Antibody (N-term) - Additional Information

Gene ID 114034

Other Names

Target of EGR1 protein 1, TOE1

Target/Specificity

This TOE1 antibody is generated from rabbits immunized with a KLH conjugated synthetic peptide between 90-117 amino acids from the N-terminal region of human TOE1.

Dilution

WB~~1:1000

Format

Purified polyclonal antibody supplied in PBS with 0.09% (W/V) sodium azide. This antibody is purified through a protein A column, followed by peptide affinity purification.

Storage

Maintain refrigerated at 2-8°C for up to 2 weeks. For long term storage store at -20°C in small aliquots to prevent freeze-thaw cycles.

Precautions

TOE1 Antibody (N-term) is for research use only and not for use in diagnostic or therapeutic procedures.

TOE1 Antibody (N-term) - Protein Information

Name TOE1

Function Inhibits cell growth rate and cell cycle. Induces CDKN1A expression as well as TGF-beta expression. Mediates the inhibitory growth effect of EGR1. Involved in the maturation of snRNAs

and snRNA 3'-tail processing (PubMed:[28092684](#)).

Cellular Location

Nucleus, nucleolus. Nucleus speckle. Note=Localizes to nuclear speckles

Tissue Location

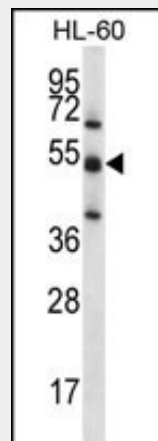
Widely expressed..

TOE1 Antibody (N-term) - Protocols

Provided below are standard protocols that you may find useful for product applications.

- [Western Blot](#)
- [Blocking Peptides](#)
- [Dot Blot](#)
- [Immunohistochemistry](#)
- [Immunofluorescence](#)
- [Immunoprecipitation](#)
- [Flow Cytometry](#)
- [Cell Culture](#)

TOE1 Antibody (N-term) - Images



TOE1 Antibody (N-term) (Cat. #AP12267a) western blot analysis in HL-60 cell line lysates (35ug/lane). This demonstrates the TOE1 antibody detected the TOE1 protein (arrow).

TOE1 Antibody (N-term) - Background

TOE1 inhibits cell growth rate and cell cycle. Induces CDKN1A expression as well as TGF-beta expression. Mediates the inhibitory growth effect of EGR1.

TOE1 Antibody (N-term) - References

- Olsen, J.V., et al. Cell 127(3):635-648(2006)
De Belle, I., et al. J. Biol. Chem. 278(16):14306-14312(2003)
Robertson, N.G., et al. Genomics 23(1):42-50(1994)