

**LUC7L Antibody (Center)**  
**Affinity Purified Rabbit Polyclonal Antibody (Pab)**  
**Catalog # AP12203c****Specification**

---

**LUC7L Antibody (Center) - Product Information**

|                   |  |
|-------------------|--|
| Application       | <b>WB, IHC-P,E</b>                                 |
| Primary Accession | <a href="#">O9NQ29</a>                             |
| Other Accession   | <a href="#">O9CYI4</a> , <a href="#">NP_958815</a> |
| Reactivity        | <b>Human</b>                                       |
| Predicted         | <b>Mouse</b>                                       |
| Host              | <b>Rabbit</b>                                      |
| Clonality         | <b>Polyclonal</b>                                  |
| Isotype           | <b>Rabbit IgG</b>                                  |
| Calculated MW     | <b>43728</b>                                       |
| Antigen Region    | <b>219-246</b>                                     |

**LUC7L Antibody (Center) - Additional Information****Gene ID** 55692**Other Names**

Putative RNA-binding protein Luc7-like 1, Putative SR protein LUC7B1, SR+89, LUC7L, LUC7L1

**Target/Specificity**

This LUC7L antibody is generated from rabbits immunized with a KLH conjugated synthetic peptide between 219-246 amino acids from the Central region of human LUC7L.

**Dilution**WB~~1:1000  
IHC-P~~1:10~50**Format**

Purified polyclonal antibody supplied in PBS with 0.09% (W/V) sodium azide. This antibody is purified through a protein A column, followed by peptide affinity purification.

**Storage**

Maintain refrigerated at 2-8°C for up to 2 weeks. For long term storage store at -20°C in small aliquots to prevent freeze-thaw cycles.

**Precautions**

LUC7L Antibody (Center) is for research use only and not for use in diagnostic or therapeutic procedures.

**LUC7L Antibody (Center) - Protein Information****Name** LUC7L

## Synonyms LUC7L1

**Function** May bind to RNA via its Arg/Ser-rich domain.

## Tissue Location

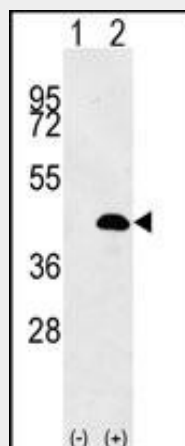
Ubiquitous..

## LUC7L Antibody (Center) - Protocols

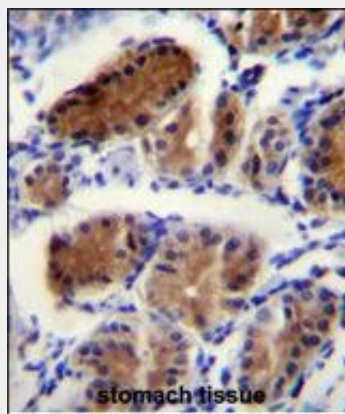
Provided below are standard protocols that you may find useful for product applications.

- [Western Blot](#)
- [Blocking Peptides](#)
- [Dot Blot](#)
- [Immunohistochemistry](#)
- [Immunofluorescence](#)
- [Immunoprecipitation](#)
- [Flow Cytometry](#)
- [Cell Culture](#)

## LUC7L Antibody (Center) - Images



Western blot analysis of LUC7L (arrow) using rabbit polyclonal LUC7L Antibody (Center) (Cat. #AP12203c). 293 cell lysates (2 ug/lane) either nontransfected (Lane 1) or transiently transfected (Lane 2) with the LUC7L gene.



LUC7L Antibody (Center) (Cat. #AP12203c) immunohistochemistry analysis in formalin fixed and paraffin embedded human stomach tissue followed by peroxidase conjugation of the secondary antibody and DAB staining. This data demonstrates the use of LUC7L Antibody (Center) for immunohistochemistry. Clinical relevance has not been evaluated.

#### **LUC7L Antibody (Center) - Background**

The LUC7L gene may represent a mammalian heterochromatic gene, encoding a putative RNA-binding protein similar to the yeast Luc7p subunit of the U1 snRNP splicing complex that is normally required for 5-prime splice site selection (Tufarelli et al., 2001 [PubMed 11170747]).

#### **LUC7L Antibody (Center) - References**

Bailey, S.D., et al. Diabetes Care 33(10):2250-2253(2010)  
Talmud, P.J., et al. Am. J. Hum. Genet. 85(5):628-642(2009)  
Lamesch, P., et al. Genomics 89(3):307-315(2007)  
Ewing, R.M., et al. Mol. Syst. Biol. 3, 89 (2007) :  
Olsen, J.V., et al. Cell 127(3):635-648(2006)