

**PRMT8 Antibody (C-term)**  
**Purified Rabbit Polyclonal Antibody (Pab)**  
**Catalog # AP1219b**

**Specification**

---

**PRMT8 Antibody (C-term) - Product Information**

Application	<b>WB,E</b>
Primary Accession	<a href="#">O9NR22</a>
Other Accession	<a href="#">O6PAK3</a>
Reactivity	<b>Human</b>
Predicted	<b>Mouse</b>
Host	<b>Rabbit</b>
Clonality	<b>Polyclonal</b>
Isotype	<b>Rabbit IgG</b>
Calculated MW	<b>45291</b>
Antigen Region	<b>344-373</b>

**PRMT8 Antibody (C-term) - Additional Information**

**Gene ID** 56341

**Other Names**

Protein arginine N-methyltransferase 8, 211-, Heterogeneous nuclear ribonucleoprotein methyltransferase-like protein 4, PRMT8, HRMT1L3, HRMT1L4

**Target/Specificity**

This PRMT8 antibody is generated from rabbits immunized with a KLH conjugated synthetic peptide between 344-373 amino acids from the C-terminal region of human PRMT8.

**Dilution**

WB~~1:1000

**Format**

Purified polyclonal antibody supplied in PBS with 0.09% (W/V) sodium azide. This antibody is prepared by Saturated Ammonium Sulfate (SAS) precipitation followed by dialysis against PBS.

**Storage**

Maintain refrigerated at 2-8°C for up to 2 weeks. For long term storage store at -20°C in small aliquots to prevent freeze-thaw cycles.

**Precautions**

PRMT8 Antibody (C-term) is for research use only and not for use in diagnostic or therapeutic procedures.

**PRMT8 Antibody (C-term) - Protein Information**

**Name** PRMT8 ([HGNC:5188](#))

### Synonyms HRMT1L3, HRMT1L4

**Function** S-adenosyl-L-methionine-dependent and membrane-associated arginine methyltransferase that can both catalyze the formation of omega-N monomethylarginine (MMA) and asymmetrical dimethylarginine (aDMA) in proteins such as NIFK, myelin basic protein, histone H4, H2A and H2A/H2B dimer (PubMed:[16051612](#), PubMed:[17925405](#), PubMed:[26529540](#), PubMed:[26876602](#)). Able to mono- and dimethylate EWS protein; however its precise role toward EWS remains unclear as it still interacts with fully methylated EWS (PubMed:[18320585](#)).

### Cellular Location

Cell membrane; Lipid-anchor; Cytoplasmic side

### Tissue Location

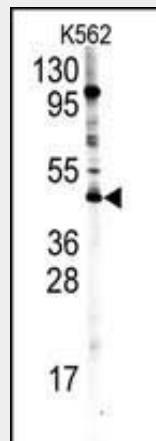
Brain-specific..

### PRMT8 Antibody (C-term) - Protocols

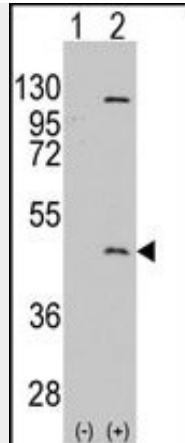
Provided below are standard protocols that you may find useful for product applications.

- [Western Blot](#)
- [Blocking Peptides](#)
- [Dot Blot](#)
- [Immunohistochemistry](#)
- [Immunofluorescence](#)
- [Immunoprecipitation](#)
- [Flow Cytometry](#)
- [Cell Culture](#)

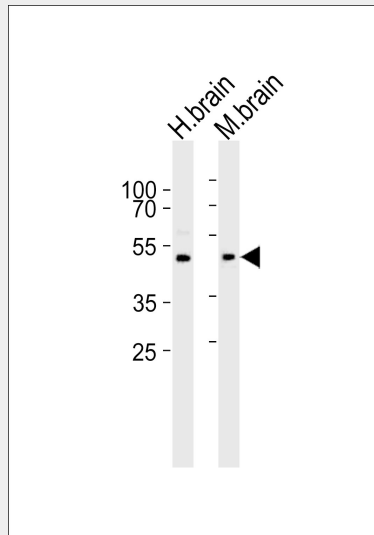
### PRMT8 Antibody (C-term) - Images



Western blot analysis of PRMT8 Antibody (C-term) (Cat.#AP1219b) in K562 cell line lysates (35ug/lane). PRMT8 (arrow) was detected using the purified Pab.



Western blot analysis of PRMT8 (arrow) using rabbit polyclonal PRMT8 Antibody (C-term) (Cat.#AP1219b). 293 cell lysates (2 ug/lane) either nontransfected (Lane 1) or transiently transfected with the PRMT8 gene (Lane 2) (Origene Technologies).



Western blot analysis of lysates from human brain, mouse brain tissue lysate (from left to right), using PRMT8 Antibody (C-term)(Cat. #AP1219b). AP1219b was diluted at 1:1000 at each lane. A goat anti-rabbit IgG H&L(HRP) at 1:10000 dilution was used as the secondary antibody. Lysates at 35ug per lane.

### PRMT8 Antibody (C-term) - Background

Protein arginine methylation plays a role in signal transduction, RNA processing, transcriptional regulation, and DNA repair. PRMT8, a protein arginine N-methyltransferase most closely related to PRMT1, methylates the guanidino nitrogens of arginyl residues in some proteins. This protein associates with the plasma membrane following myristoylation and exhibits a brain-specific expression pattern, making it unique within this family of enzymes.

### PRMT8 Antibody (C-term) - References

Lee,J., J. Biol. Chem. 280 (38), 32890-32896 (2005)