

**FGF22 Antibody (N-term)**  
**Affinity Purified Rabbit Polyclonal Antibody (Pab)**  
**Catalog # AP12191A**

**Specification**

---

**FGF22 Antibody (N-term) - Product Information**

Application	WB,E
Primary Accession	<a href="#">O9HCT0</a>
Other Accession	<a href="#">O9ESS2</a> , <a href="#">NP_065688.1</a>
Reactivity	Human
Predicted	Mouse
Host	Rabbit
Clonality	Polyclonal
Isotype	Rabbit IgG
Calculated MW	19663
Antigen Region	18-46

**FGF22 Antibody (N-term) - Additional Information**

**Gene ID** 27006

**Other Names**

Fibroblast growth factor 22, FGF-22, FGF22

**Target/Specificity**

This FGF22 antibody is generated from rabbits immunized with a KLH conjugated synthetic peptide between 18-46 amino acids from the N-terminal region of human FGF22.

**Dilution**

WB~~1:1000

**Format**

Purified polyclonal antibody supplied in PBS with 0.09% (W/V) sodium azide. This antibody is purified through a protein A column, followed by peptide affinity purification.

**Storage**

Maintain refrigerated at 2-8°C for up to 2 weeks. For long term storage store at -20°C in small aliquots to prevent freeze-thaw cycles.

**Precautions**

FGF22 Antibody (N-term) is for research use only and not for use in diagnostic or therapeutic procedures.

**FGF22 Antibody (N-term) - Protein Information**

**Name** FGF22

**Function** Plays a role in the fasting response, glucose homeostasis, lipolysis and lipogenesis. Can

stimulate cell proliferation (in vitro). May be involved in hair development.

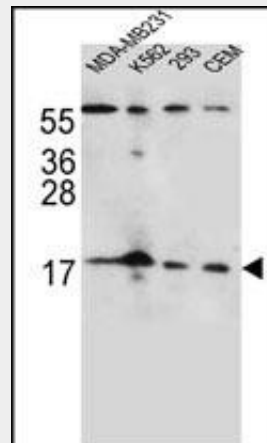
**Cellular Location**  
Secreted.

### FGF22 Antibody (N-term) - Protocols

Provided below are standard protocols that you may find useful for product applications.

- [Western Blot](#)
- [Blocking Peptides](#)
- [Dot Blot](#)
- [Immunohistochemistry](#)
- [Immunofluorescence](#)
- [Immunoprecipitation](#)
- [Flow Cytometry](#)
- [Cell Culture](#)

### FGF22 Antibody (N-term) - Images



FGF22 Antibody (N-term) (Cat. #AP12191a) western blot analysis in MDA-MB231, K562, 293, CEM cell line lysates (35ug/lane). This demonstrates the FGF22 antibody detected the FGF22 protein (arrow).

### FGF22 Antibody (N-term) - Background

The protein encoded by this gene is a member of the fibroblast growth factor (FGF) family. FGF family members possess broad mitogenic and cell survival activities and are involved in a variety of biological processes including embryonic development, cell growth, morphogenesis, tissue repair, tumor growth and invasion. The mouse homolog of this gene was found to be preferentially expressed in the inner root sheath of the hair follicle, which suggested a role in hair development. [provided by RefSeq].

### FGF22 Antibody (N-term) - References

Moffa, A.B., et al. J. Cell. Physiol. 210(3):720-731(2007)  
Zhang, X., et al. J. Biol. Chem. 281(23):15694-15700(2006)

Beer, H.D., et al. Oncogene 24(34):5269-5277(2005)  
Popovici, C., et al. J. Biol. Chem. 279(38):40146-40152(2004)  
Umemori, H., et al. Cell 118(2):257-270(2004)