

PYGO1 Antibody (C-term)
Affinity Purified Rabbit Polyclonal Antibody (Pab)
Catalog # AP12187b

Specification

PYGO1 Antibody (C-term) - Product Information

Application	IF, WB, IHC-P,E
Primary Accession	O9Y3Y4
Other Accession	NP_056432.1
Reactivity	Human
Host	Rabbit
Clonality	Polyclonal
Isotype	Rabbit IgG
Calculated MW	45116
Antigen Region	382-409

PYGO1 Antibody (C-term) - Additional Information

Gene ID 26108

Other Names

Pygopus homolog 1, PYGO1

Target/Specificity

This PYGO1 antibody is generated from rabbits immunized with a KLH conjugated synthetic peptide between 382-409 amino acids from the C-terminal region of human PYGO1.

Dilution

IF~~1:10~50
WB~~1:1000
IHC-P~~1:10~50

Format

Purified polyclonal antibody supplied in PBS with 0.09% (W/V) sodium azide. This antibody is purified through a protein A column, followed by peptide affinity purification.

Storage

Maintain refrigerated at 2-8°C for up to 2 weeks. For long term storage store at -20°C in small aliquots to prevent freeze-thaw cycles.

Precautions

PYGO1 Antibody (C-term) is for research use only and not for use in diagnostic or therapeutic procedures.

PYGO1 Antibody (C-term) - Protein Information

Name PYGO1

Function Involved in signal transduction through the Wnt pathway.

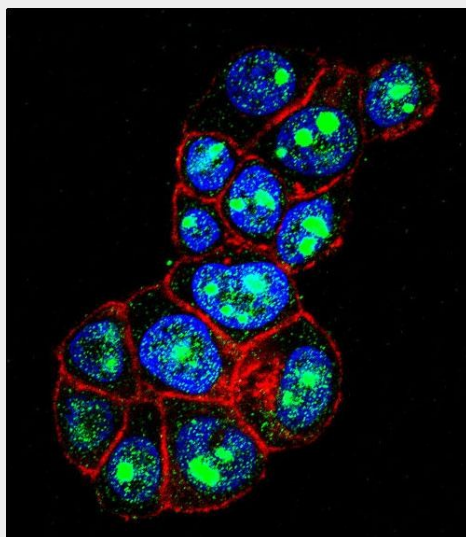
Cellular Location
Nucleus.

PYGO1 Antibody (C-term) - Protocols

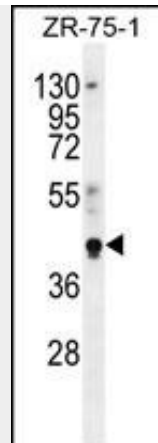
Provided below are standard protocols that you may find useful for product applications.

- [Western Blot](#)
- [Blocking Peptides](#)
- [Dot Blot](#)
- [Immunohistochemistry](#)
- [Immunofluorescence](#)
- [Immunoprecipitation](#)
- [Flow Cytometry](#)
- [Cell Culture](#)

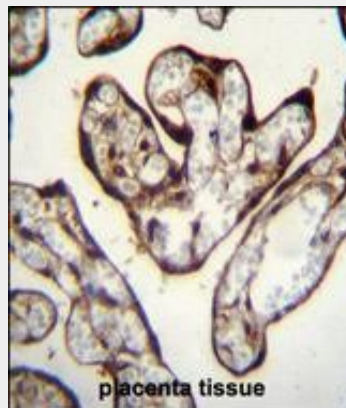
PYGO1 Antibody (C-term) - Images



Confocal immunofluorescent analysis of PYGO1 Antibody (C-term)(Cat#AP12187b) with ZR-75-1 cell followed by Alexa Fluor 488-conjugated goat anti-rabbit IgG (green). Actin filaments have been labeled with Alexa Fluor 555 phalloidin (red).DAPI was used to stain the cell nuclear (blue).



PYGO1 Antibody (C-term) (Cat. #AP12187b) western blot analysis in ZR-75-1 cell line lysates (35ug/lane). This demonstrates the PYGO1 antibody detected the PYGO1 protein (arrow).



PYGO1 Antibody (C-term) (Cat. #AP12187b) immunohistochemistry analysis in formalin fixed and paraffin embedded human placenta tissue followed by peroxidase conjugation of the secondary antibody and DAB staining. This data demonstrates the use of PYGO1 Antibody (C-term) for immunohistochemistry. Clinical relevance has not been evaluated.

PYGO1 Antibody (C-term) - Background

PYGO1 is involved in signal transduction through the Wnt pathway.

PYGO1 Antibody (C-term) - References

Frank, B., et al. Carcinogenesis (2010) In press :
Fiedler, M., et al. Mol. Cell 30(4):507-518(2008)
Townsend, F.M., et al. J. Biol. Chem. 279(7):5177-5183(2004)
Thompson, B., et al. Nat. Cell Biol. 4(5):367-373(2002)
Kramps, T., et al. Cell 109(1):47-60(2002)