

PCYT1A Antibody (N-term)
Affinity Purified Rabbit Polyclonal Antibody (Pab)
Catalog # AP12169A

Specification

PCYT1A Antibody (N-term) - Product Information

Application	IF, WB, IHC-P,E
Primary Accession	P49585
Other Accession	P19836 , P49586 , P49584 , NP_005008.2
Reactivity	Human
Predicted	Hamster, Mouse, Rat
Host	Rabbit
Clonality	Polyclonal
Isotype	Rabbit IgG
Antigen Region	27-54

PCYT1A Antibody (N-term) - Additional Information

Gene ID 5130

Other Names

Choline-phosphate cytidyltransferase A, CCT-alpha, CTP:phosphocholine cytidyltransferase A, CCT A, CT A, Phosphorylcholine transferase A, PCYT1A, CTPCT, PCYT1

Target/Specificity

This PCYT1A antibody is generated from rabbits immunized with a KLH conjugated synthetic peptide between 27-54 amino acids from the N-terminal region of human PCYT1A.

Dilution

IF~~1:10~50
WB~~1:1000
IHC-P~~1:10~50

Format

Purified polyclonal antibody supplied in PBS with 0.09% (W/V) sodium azide. This antibody is purified through a protein A column, followed by peptide affinity purification.

Storage

Maintain refrigerated at 2-8°C for up to 2 weeks. For long term storage store at -20°C in small aliquots to prevent freeze-thaw cycles.

Precautions

PCYT1A Antibody (N-term) is for research use only and not for use in diagnostic or therapeutic procedures.

PCYT1A Antibody (N-term) - Protein Information

Name PCYT1A

Synonyms CTPCT, PCYT1

Function Catalyzes the key rate-limiting step in the CDP-choline pathway for phosphatidylcholine biosynthesis.

Cellular Location

Cytoplasm, cytosol {ECO:0000250|UniProtKB:P19836}. Membrane {ECO:0000250|UniProtKB:P19836}; Peripheral membrane protein {ECO:0000250|UniProtKB:P19836}. Endoplasmic reticulum. Nucleus Note=It can interconvert between an inactive cytosolic form and an active membrane-bound form. {ECO:0000250|UniProtKB:P19836}

Tissue Location

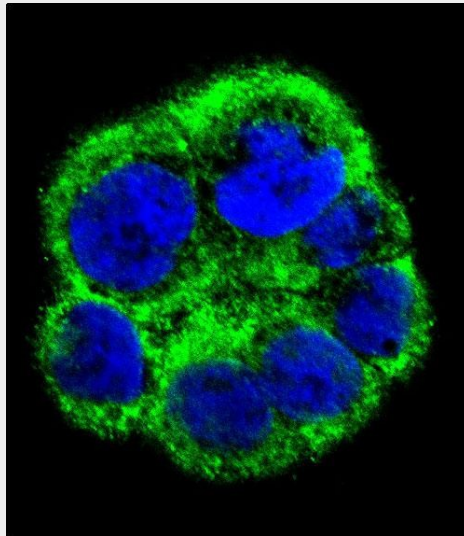
Brain, placenta, liver, fetal and adult lung.

PCYT1A Antibody (N-term) - Protocols

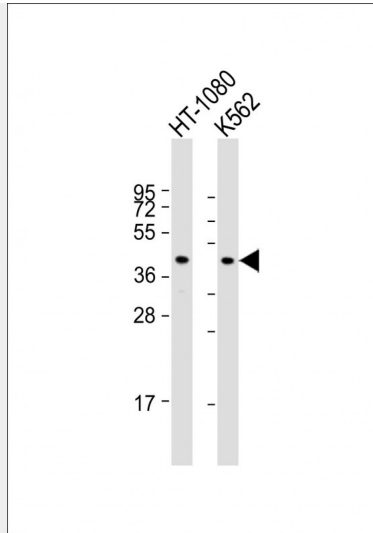
Provided below are standard protocols that you may find useful for product applications.

- [Western Blot](#)
- [Blocking Peptides](#)
- [Dot Blot](#)
- [Immunohistochemistry](#)
- [Immunofluorescence](#)
- [Immunoprecipitation](#)
- [Flow Cytometry](#)
- [Cell Culture](#)

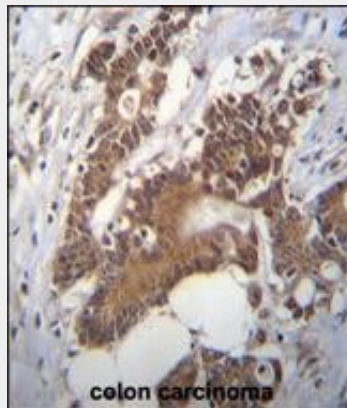
PCYT1A Antibody (N-term) - Images



Confocal immunofluorescent analysis of PCYT1A Antibody (N-term)(Cat#AP12169a) with WiDr cell followed by Alexa Fluor 488-conjugated goat anti-rabbit IgG (green). DAPI was used to stain the cell nuclear (blue).



All lanes : Anti-PCYT1A Antibody (N-term) at 1:1000 dilution Lane 1: HT-1080 whole cell lysate Lane 2: K562 whole cell lysate Lysates/proteins at 20 μ g per lane. Secondary Goat Anti-Rabbit IgG, (H+L), Peroxidase conjugated at 1/10000 dilution. Predicted band size : 42 kDa Blocking/Dilution buffer: 5% NFDM/TBST.



PCYT1A Antibody (N-term) (Cat. #AP12169a) immunohistochemistry analysis in formalin fixed and paraffin embedded human colon carcinoma followed by peroxidase conjugation of the secondary antibody and DAB staining. This data demonstrates the use of PCYT1A Antibody (N-term) for immunohistochemistry. Clinical relevance has not been evaluated.

PCYT1A Antibody (N-term) - Background

PCYT1A controls phosphatidylcholine synthesis.

PCYT1A Antibody (N-term) - References

- Mostowska, A., et al. J. Med. Genet. (2010) In press :
- Mostowska, A., et al. Eur. J. Oral Sci. 118(4):325-332(2010)
- Sugiyama, N., et al. Mol. Cell Proteomics 6(6):1103-1109(2007)
- Olsen, J.V., et al. Cell 127(3):635-648(2006)
- Olsen, J.V., et al. Cell 127(3):635-648(2006)