

CYBA Antibody (C-term)
Affinity Purified Rabbit Polyclonal Antibody (Pab)
Catalog # AP12149b

Specification

CYBA Antibody (C-term) - Product Information

Application	IF, WB,E
Primary Accession	P13498
Other Accession	NP_000092.2
Reactivity	Human
Host	Rabbit
Clonality	Polyclonal
Isotype	Rabbit IgG
Calculated MW	21013
Antigen Region	117-145

CYBA Antibody (C-term) - Additional Information

Gene ID 1535

Other Names

Cytochrome b-245 light chain, Cytochrome b(558) alpha chain, Cytochrome b558 subunit alpha, Neutrophil cytochrome b 22 kDa polypeptide, Superoxide-generating NADPH oxidase light chain subunit, p22 phagocyte B-cytochrome, p22-phox, p22phox, CYBA

Target/Specificity

This CYBA antibody is generated from rabbits immunized with a KLH conjugated synthetic peptide between 117-145 amino acids from the C-terminal region of human CYBA.

Dilution

IF~~1:10~50
WB~~1:1000

Format

Purified polyclonal antibody supplied in PBS with 0.09% (W/V) sodium azide. This antibody is purified through a protein A column, followed by peptide affinity purification.

Storage

Maintain refrigerated at 2-8°C for up to 2 weeks. For long term storage store at -20°C in small aliquots to prevent freeze-thaw cycles.

Precautions

CYBA Antibody (C-term) is for research use only and not for use in diagnostic or therapeutic procedures.

CYBA Antibody (C-term) - Protein Information

Name CYBA ([HGNC:2577](#))

Function Critical component of the membrane-bound oxidase of phagocytes that generates superoxide. Associates with NOX3 to form a functional NADPH oxidase constitutively generating superoxide.

Cellular Location

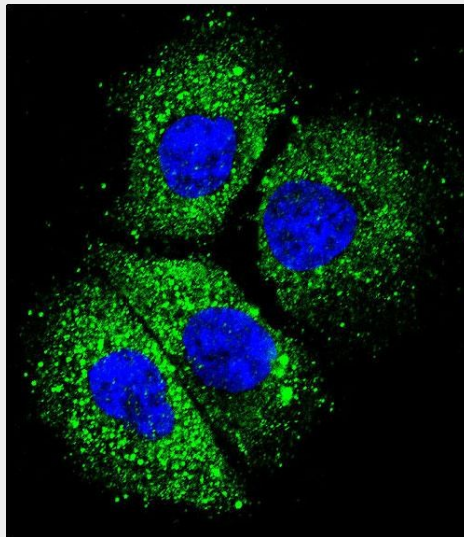
Cell membrane. Note=As unassembled monomer may localize to the endoplasmic reticulum {ECO:0000250|UniProtKB:Q61462}

CYBA Antibody (C-term) - Protocols

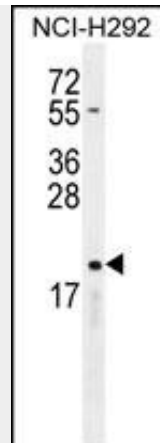
Provided below are standard protocols that you may find useful for product applications.

- [Western Blot](#)
- [Blocking Peptides](#)
- [Dot Blot](#)
- [Immunohistochemistry](#)
- [Immunofluorescence](#)
- [Immunoprecipitation](#)
- [Flow Cytometry](#)
- [Cell Culture](#)

CYBA Antibody (C-term) - Images



Confocal immunofluorescent analysis of CYBA Antibody (C-term)(Cat#AP12149b) with NCI-H292 cell followed by Alexa Fluor 488-conjugated goat anti-rabbit IgG (green).DAPI was used to stain the cell nuclear (blue).



CYBA Antibody (C-term) (Cat. #AP12149b) western blot analysis in NCI-H292 cell line lysates (35ug/lane). This demonstrates the CYBA antibody detected the CYBA protein (arrow).

CYBA Antibody (C-term) - Background

Cytochrome b is comprised of a light chain (alpha) and a heavy chain (beta). This gene encodes the light, alpha subunit which has been proposed as a primary component of the microbicidal oxidase system of phagocytes. Mutations in this gene are associated with autosomal recessive chronic granulomatous disease (CGD), that is characterized by the failure of activated phagocytes to generate superoxide, which is important for the microbicidal activity of these cells.

CYBA Antibody (C-term) - References

Bailey, S.D., et al. *Diabetes Care* 33(10):2250-2253(2010)
Katakami, N., et al. *Atherosclerosis* 212(2):534-538(2010)
Tu, Y.C., et al. *Acta Pharmacol. Sin.* 31(7):874-880(2010)
Moreno, M.U., et al. *Drug News Perspect.* 23(5):316-324(2010)
Cross, D.S., et al. *BMC Genet.* 11, 51 (2010) :