

RAD26 Antibody (Center)
Affinity Purified Rabbit Polyclonal Antibody (Pab)
Catalog # AP12097c

Specification

RAD26 Antibody (Center) - Product Information

Application	WB,E
Primary Accession	O5T890
Other Accession	NP_001010895.1
Reactivity	Human
Host	Rabbit
Clonality	Polyclonal
Isotype	Rabbit IgG
Calculated MW	176051
Antigen Region	226-254

RAD26 Antibody (Center) - Additional Information

Gene ID 375748

Other Names

DNA excision repair protein ERCC-6-like 2, 364-, DNA repair and recombination protein RAD26-like, ERCC6L2, C9orf102, RAD26L

Target/Specificity

This RAD26 antibody is generated from rabbits immunized with a KLH conjugated synthetic peptide between 226-254 amino acids from the Central region of human RAD26.

Dilution

WB~~1:1000

Format

Purified polyclonal antibody supplied in PBS with 0.09% (W/V) sodium azide. This antibody is purified through a protein A column, followed by peptide affinity purification.

Storage

Maintain refrigerated at 2-8°C for up to 2 weeks. For long term storage store at -20°C in small aliquots to prevent freeze-thaw cycles.

Precautions

RAD26 Antibody (Center) is for research use only and not for use in diagnostic or therapeutic procedures.

RAD26 Antibody (Center) - Protein Information

Name ERCC6L2 ([HGNC:26922](#))

Synonyms C9orf102, RAD26L

Function May be involved in early DNA damage response.

Cellular Location

Nucleus. Cytoplasm, cytoskeleton, microtubule organizing center, centrosome. Mitochondrion.
Note=Colocalizes with NEK6 in the centrosome. In response to DNA damage, translocates from the cytosol to mitochondria and nucleus in a reactive oxygen species (ROS)-dependent manner

Tissue Location

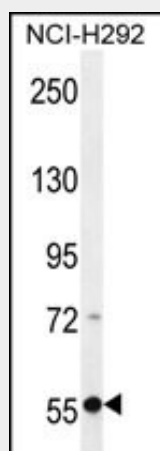
Expressed in bone marrow (at protein level).

RAD26 Antibody (Center) - Protocols

Provided below are standard protocols that you may find useful for product applications.

- [Western Blot](#)
- [Blocking Peptides](#)
- [Dot Blot](#)
- [Immunohistochemistry](#)
- [Immunofluorescence](#)
- [Immunoprecipitation](#)
- [Flow Cytometry](#)
- [Cell Culture](#)

RAD26 Antibody (Center) - Images



RAD26 Antibody (Center) (Cat. #AP12097c) western blot analysis in NCI-H292 cell line lysates (35ug/lane). This demonstrates the RAD26 antibody detected the RAD26 protein (arrow).

RAD26 Antibody (Center) - References

Lamesch, P., et al. Genomics 89(3):307-315(2007)
Venter, J.C., et al. Science 291(5507):1304-1351(2001)