

**ZEB2 Antibody (C-term)**  
**Affinity Purified Rabbit Polyclonal Antibody (Pab)**  
**Catalog # AP12086b**

**Specification**

---

**ZEB2 Antibody (C-term) - Product Information**

Application	<b>WB, FC,E</b>
Primary Accession	<a href="#">O60315</a>
Other Accession	<a href="#">O9R0G7</a> , <a href="#">NP_055610.1</a> , <a href="#">NP_001165124.1</a>
Reactivity	<b>Human</b>
Predicted	<b>Mouse</b>
Host	<b>Rabbit</b>
Clonality	<b>Polyclonal</b>
Isotype	<b>Rabbit IgG</b>
Antigen Region	<b>1078-1105</b>

**ZEB2 Antibody (C-term) - Additional Information**

**Gene ID** 9839

**Other Names**

Zinc finger E-box-binding homeobox 2, Smad-interacting protein 1, SMADIP1, Zinc finger homeobox protein 1b, ZEB2, KIAA0569, SIP1, ZFHX1B, ZFX1B

**Target/Specificity**

This ZEB2 antibody is generated from rabbits immunized with a KLH conjugated synthetic peptide between 1078-1105 amino acids from the C-terminal region of human ZEB2.

**Dilution**

WB~~1:2000  
FC~~1:10~50

**Format**

Purified polyclonal antibody supplied in PBS with 0.09% (W/V) sodium azide. This antibody is purified through a protein A column, followed by peptide affinity purification.

**Storage**

Maintain refrigerated at 2-8°C for up to 2 weeks. For long term storage store at -20°C in small aliquots to prevent freeze-thaw cycles.

**Precautions**

ZEB2 Antibody (C-term) is for research use only and not for use in diagnostic or therapeutic procedures.

**ZEB2 Antibody (C-term) - Protein Information**

**Name** ZEB2 ([HGNC:14881](#))

**Function** Transcriptional inhibitor that binds to DNA sequence 5'- CACCT-3' in different promoters (PubMed:[16061479](#), PubMed:[20516212](#)). Represses transcription of E-cadherin (PubMed:[16061479](#)). Represses expression of MEOX2 (PubMed:[20516212](#)).

**Cellular Location**

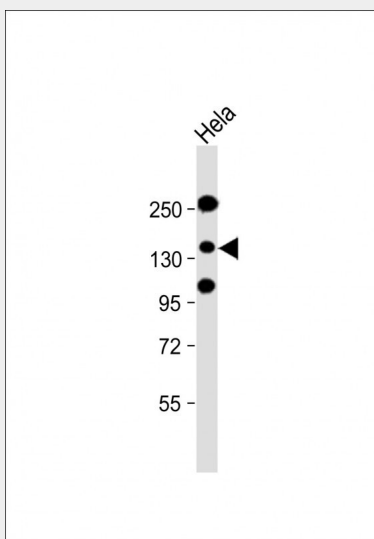
Nucleus. Chromosome

**ZEB2 Antibody (C-term) - Protocols**

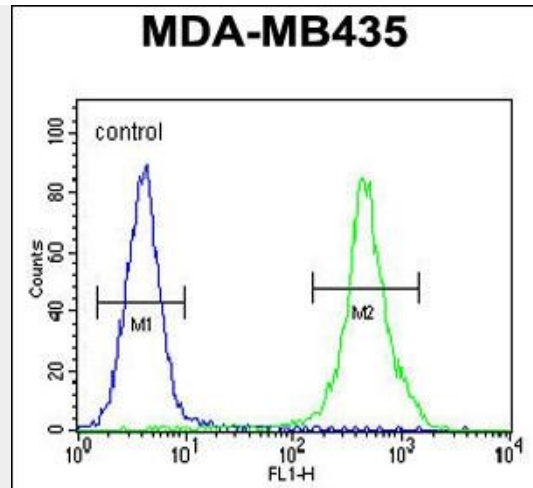
Provided below are standard protocols that you may find useful for product applications.

- [Western Blot](#)
- [Blocking Peptides](#)
- [Dot Blot](#)
- [Immunohistochemistry](#)
- [Immunofluorescence](#)
- [Immunoprecipitation](#)
- [Flow Cytometry](#)
- [Cell Culture](#)

**ZEB2 Antibody (C-term) - Images**



Anti-ZEB2 Antibody (C-term) at 1:2000 dilution + HeLa cell nucleus lysate Lysates/proteins at 20 µg per lane. Secondary Goat Anti-Rabbit IgG, (H+L), Peroxidase conjugated at 1/10000 dilution. Predicted band size : 136 kDa Blocking/Dilution buffer: 5% NFDM/TBST.



ZEB2 Antibody (C-term) (Cat. #AP12086b) flow cytometric analysis of MDA-MB435 cells (right histogram) compared to a negative control cell (left histogram). FITC-conjugated goat-anti-rabbit secondary antibodies were used for the analysis.

### ZEB2 Antibody (C-term) - Background

The protein encoded by this gene is a member of the Zfh1 family of 2-handed zinc finger/homeodomain proteins. It is located in the nucleus and functions as a DNA-binding transcriptional repressor that interacts with activated SMADs. Mutations in this gene are associated with Hirschsprung disease/Mowat-Wilson syndrome. Alternatively spliced transcript variants have been found for this gene.

### ZEB2 Antibody (C-term) - References

- Kumar, P.A., et al. J. Biol. Chem. 285(41):31148-31156(2010)
- Li, A., et al. Cancer Res. 70(13):5226-5237(2010)
- Ohashi, S., et al. Cancer Res. 70(10):4174-4184(2010)
- Jugessur, A., et al. PLoS ONE 5 (7), E11493 (2010) :
- Eriksson, N., et al. PLoS Genet. 6 (6), E1000993 (2010) :