

TBX6 Antibody (Center)
Affinity Purified Rabbit Polyclonal Antibody (Pab)
Catalog # AP12063c**Specification**

TBX6 Antibody (Center) - Product Information

Application	IF, WB,E
Primary Accession	O95947
Other Accession	D3ZJK7 , P70327 , E1BEA8 , NP_004599.2
Reactivity	Human, Mouse
Predicted	Bovine, Rat
Host	Rabbit
Clonality	Polyclonal
Isotype	Rabbit IgG
Calculated MW	47045
Antigen Region	264-293

TBX6 Antibody (Center) - Additional Information**Gene ID** 6911**Other Names**

T-box transcription factor TBX6, T-box protein 6, TBX6

Target/Specificity

This TBX6 antibody is generated from rabbits immunized with a KLH conjugated synthetic peptide between 264-293 amino acids from the Central region of human TBX6.

Dilution

IF~~1:10~50

WB~~1:500

Format

Purified polyclonal antibody supplied in PBS with 0.09% (W/V) sodium azide. This antibody is purified through a protein A column, followed by peptide affinity purification.

Storage

Maintain refrigerated at 2-8°C for up to 2 weeks. For long term storage store at -20°C in small aliquots to prevent freeze-thaw cycles.

Precautions

TBX6 Antibody (Center) is for research use only and not for use in diagnostic or therapeutic procedures.

TBX6 Antibody (Center) - Protein Information**Name** TBX6

Function T-box transcription factor that plays an essential role in the determination of the fate of axial stem cells: neural vs mesodermal. Acts in part by down-regulating, a specific enhancer (N1) of SOX2, to inhibit neural development. Seems to play also an essential role in left/right axis determination and acts through effects on Notch signaling around the node as well as through an effect on the morphology and motility of the nodal cilia (By similarity).

Cellular Location

Nucleus {ECO:0000255|PROSITE-ProRule:PRU00201}.

Tissue Location

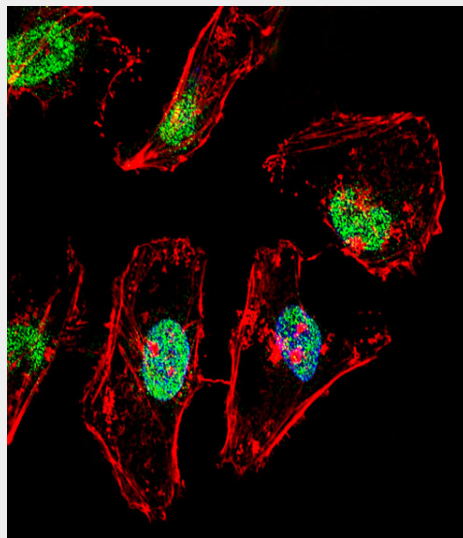
Expressed in fetal tail bud, posterior spinal tissue, intervertebral disk and testis. Also expressed in adult testis, kidney, lung, muscle and thymus

TBX6 Antibody (Center) - Protocols

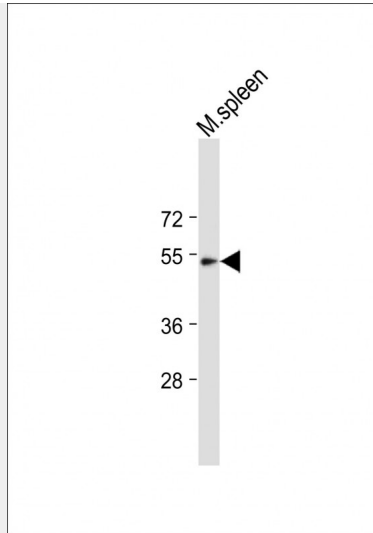
Provided below are standard protocols that you may find useful for product applications.

- [Western Blot](#)
- [Blocking Peptides](#)
- [Dot Blot](#)
- [Immunohistochemistry](#)
- [Immunofluorescence](#)
- [Immunoprecipitation](#)
- [Flow Cytometry](#)
- [Cell Culture](#)

TBX6 Antibody (Center) - Images



Fluorescent confocal image of HeLa cell stained with TBX6 Antibody (Center)(Cat#AP12063c). HeLa cells were fixed with 4% PFA (20 min), permeabilized with Triton X-100 (0.1%, 10 min), then incubated with TBX6 primary antibody (1:25, 1 h at 37°C). For secondary antibody, Alexa Fluor® 488 conjugated donkey anti-rabbit antibody (green) was used (1:400, 50 min at 37°C). Cytoplasmic actin was counterstained with Alexa Fluor® 555 (red) conjugated Phalloidin (7units/ml, 1 h at 37°C). Nuclei were counterstained with DAPI (blue) (10 µg/ml, 10 min). TBX6 immunoreactivity is localized to nucleus significantly.



Anti-TBX6 Antibody (Center) at 1:500 dilution + Mouse spleen tissue lysate Lysates/proteins at 20 μ g per lane. Secondary Goat Anti-Rabbit IgG, (H+L), Peroxidase conjugated at 1/10000 dilution. Predicted band size : 47 kDa Blocking/Dilution buffer: 5% NFDM/TBST.

TBX6 Antibody (Center) - Background

This gene is a member of a phylogenetically conserved family of genes that share a common DNA-binding domain, the T-box. T-box genes encode transcription factors involved in the regulation of developmental processes. Knockout studies in mice indicate that this gene is important for specification of paraxial mesoderm structures.

TBX6 Antibody (Center) - References

- Fei, Q., et al. Spine 35(9):983-988(2010)
- Ghebranious, N., et al. J. Bone Miner. Res. 23(10):1576-1583(2008)
- Farin, H.F., et al. J. Biol. Chem. 282(35):25748-25759(2007)
- Papapetrou, C., et al. Genomics 55(2):238-241(1999)
- Yi, C.H., et al. Genomics 55(1):10-20(1999)