

**TBCA Antibody (Center)**  
**Affinity Purified Rabbit Polyclonal Antibody (Pab)**  
**Catalog # AP12024C**

**Specification**

---

**TBCA Antibody (Center) - Product Information**

Application	<b>WB, IHC-P,E</b>
Primary Accession	<a href="#">O75347</a>
Other Accession	<a href="#">NP_004598.1</a>
Reactivity	<b>Human, Mouse</b>
Host	<b>Rabbit</b>
Clonality	<b>Polyclonal</b>
Isotype	<b>Rabbit IgG</b>
Calculated MW	<b>12855</b>
Antigen Region	<b>30-58</b>

**TBCA Antibody (Center) - Additional Information**

**Gene ID** 6902

**Other Names**

Tubulin-specific chaperone A, TCP1-chaperonin cofactor A, Tubulin-folding cofactor A, CFA, TBCA

**Target/Specificity**

This TBCA antibody is generated from rabbits immunized with a KLH conjugated synthetic peptide between 30-58 amino acids from the Central region of human TBCA.

**Dilution**

WB~~1:1000  
IHC-P~~1:10~50

**Format**

Purified polyclonal antibody supplied in PBS with 0.09% (W/V) sodium azide. This antibody is purified through a protein A column, followed by peptide affinity purification.

**Storage**

Maintain refrigerated at 2-8°C for up to 2 weeks. For long term storage store at -20°C in small aliquots to prevent freeze-thaw cycles.

**Precautions**

TBCA Antibody (Center) is for research use only and not for use in diagnostic or therapeutic procedures.

**TBCA Antibody (Center) - Protein Information**

**Name** TBCA

**Function** Tubulin-folding protein; involved in the early step of the tubulin folding pathway.

### Cellular Location

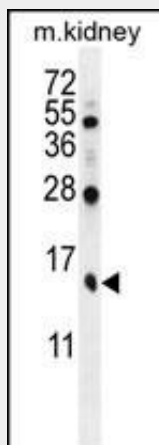
Cytoplasm, cytoskeleton.

### TBCA Antibody (Center) - Protocols

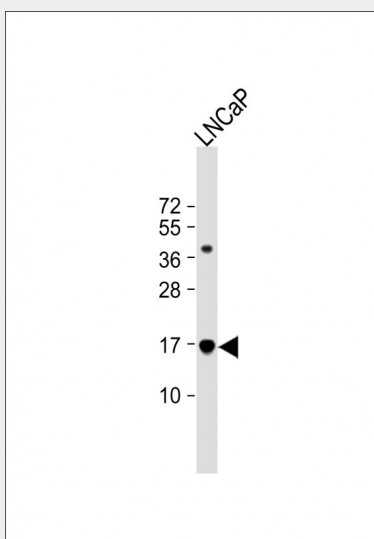
Provided below are standard protocols that you may find useful for product applications.

- [Western Blot](#)
- [Blocking Peptides](#)
- [Dot Blot](#)
- [Immunohistochemistry](#)
- [Immunofluorescence](#)
- [Immunoprecipitation](#)
- [Flow Cytometry](#)
- [Cell Culture](#)

### TBCA Antibody (Center) - Images

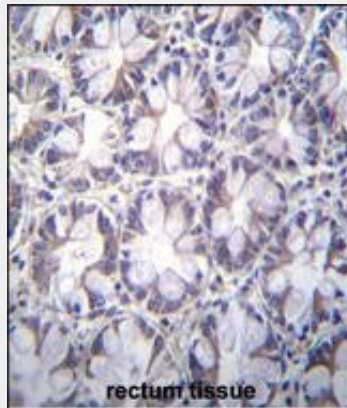


TBCA Antibody (Center) (Cat. #AP12024c) western blot analysis in mouse kidney tissue lysates (35ug/lane). This demonstrates the TBCA antibody detected the TBCA protein (arrow).



Anti-TBCA Antibody (Center) at 1:1000 dilution + LNCaP whole cell lysate Lysates/proteins at 20

µg per lane. Secondary Goat Anti-Rabbit IgG, (H+L), Peroxidase conjugated at 1/10000 dilution. Predicted band size : 13 kDa Blocking/Dilution buffer: 5% NFDm/TBST.



TBCA Antibody (Center) (Cat. #AP12024c) immunohistochemistry analysis in formalin fixed and paraffin embedded human rectum tissue followed by peroxidase conjugation of the secondary antibody and DAB staining. This data demonstrates the use of TBCA Antibody (Center) for immunohistochemistry. Clinical relevance has not been evaluated.

#### **TBCA Antibody (Center) - Background**

The product of this gene is one of four proteins (cofactors A, D, E, and C) involved in the pathway leading to correctly folded beta-tubulin from folding intermediates. Cofactors A and D are believed to play a role in capturing and stabilizing beta-tubulin intermediates in a quasi-native conformation. Cofactor E binds to the cofactor D/beta-tubulin complex; interaction with cofactor C then causes the release of beta-tubulin polypeptides that are committed to the native state. This gene encodes chaperonin cofactor A.

#### **TBCA Antibody (Center) - References**

Rose, J.E., et al. Mol. Med. 16 (7-8), 247-253 (2010) :  
Joslyn, G., et al. Alcohol. Clin. Exp. Res. 34(5):800-812(2010)  
Bruneel, A., et al. Proteomics 5(15):3876-3884(2005)  
Nolasco, S., et al. FEBS Lett. 579(17):3515-3524(2005)  
Guasch, A., et al. J. Mol. Biol. 318(4):1139-1149(2002)