

TBB8B Antibody (C-term)
Affinity Purified Rabbit Polyclonal Antibody (Pab)
Catalog # AP11937b**Specification**

TBB8B Antibody (C-term) - Product Information

Application	WB,E
Primary Accession	A6NNZ2
Other Accession	A6NKZ8
Reactivity	Human
Host	Rabbit
Clonality	Polyclonal
Isotype	Rabbit IgG
Calculated MW	49573
Antigen Region	320-347

TBB8B Antibody (C-term) - Additional Information**Other Names**

Tubulin beta-8 chain-like protein LOC260334, TBB8L

Target/Specificity

This TBB8B antibody is generated from rabbits immunized with a KLH conjugated synthetic peptide between 320-347 amino acids from the C-terminal region of human TBB8B.

Dilution

WB~~1:1000

Format

Purified polyclonal antibody supplied in PBS with 0.09% (W/V) sodium azide. This antibody is purified through a protein A column, followed by peptide affinity purification.

Storage

Maintain refrigerated at 2-8°C for up to 2 weeks. For long term storage store at -20°C in small aliquots to prevent freeze-thaw cycles.

Precautions

TBB8B Antibody (C-term) is for research use only and not for use in diagnostic or therapeutic procedures.

TBB8B Antibody (C-term) - Protein Information

Name TUBB8B ([HGNC:24983](#))

Function Tubulin is the major constituent of microtubules, a cylinder consisting of laterally associated linear protofilaments composed of alpha- and beta-tubulin heterodimers. Microtubules grow by the addition of GTP-tubulin dimers to the microtubule end, where a stabilizing cap forms. Below the cap, tubulin dimers are in GDP-bound state, owing to GTPase activity of alpha-tubulin.

Cellular Location

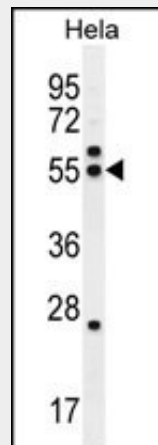
Cytoplasm, cytoskeleton.

TBB8B Antibody (C-term) - Protocols

Provided below are standard protocols that you may find useful for product applications.

- [Western Blot](#)
- [Blocking Peptides](#)
- [Dot Blot](#)
- [Immunohistochemistry](#)
- [Immunofluorescence](#)
- [Immunoprecipitation](#)
- [Flow Cytometry](#)
- [Cell Culture](#)

TBB8B Antibody (C-term) - Images



TBB8B Antibody (C-term) (Cat. #AP11937b) western blot analysis in HeLa cell line lysates (35ug/lane). This demonstrates the TBB8B antibody detected the TBB8B protein (arrow).

TBB8B Antibody (C-term) - Background

Tubulin is the major constituent of microtubules. It binds two moles of GTP, one at an exchangeable site on the beta chain and one at a non-exchangeable site on the alpha-chain (By similarity).