

VWA2 Antibody (N-term)
Affinity Purified Rabbit Polyclonal Antibody (Pab)
Catalog # AP11933a

Specification

VWA2 Antibody (N-term) - Product Information

Application	WB,E
Primary Accession	O5GFL6
Other Accession	NP_940898.1
Reactivity	Human
Host	Rabbit
Clonality	Polyclonal
Isotype	Rabbit IgG
Calculated MW	82012
Antigen Region	44-72

VWA2 Antibody (N-term) - Additional Information

Gene ID 340706

Other Names

von Willebrand factor A domain-containing protein 2, A domain-containing protein similar to matrilin and collagen, AMACO, Colon cancer secreted protein 2, CCSP-2, VWA2, AMACO

Target/Specificity

This VWA2 antibody is generated from rabbits immunized with a KLH conjugated synthetic peptide between 44-72 amino acids from the N-terminal region of human VWA2.

Dilution

WB~~1:1000

Format

Purified polyclonal antibody supplied in PBS with 0.09% (W/V) sodium azide. This antibody is purified through a protein A column, followed by peptide affinity purification.

Storage

Maintain refrigerated at 2-8°C for up to 2 weeks. For long term storage store at -20°C in small aliquots to prevent freeze-thaw cycles.

Precautions

VWA2 Antibody (N-term) is for research use only and not for use in diagnostic or therapeutic procedures.

VWA2 Antibody (N-term) - Protein Information

Name VWA2

Synonyms AMACO

Cellular Location
Secreted.

Tissue Location

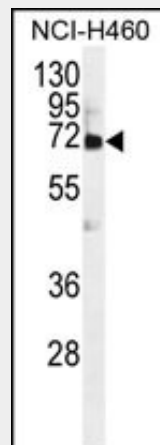
Expression is generally absent in normal colon and other normal body tissues, but it is induced an average of 78-fold in Stage II, III, and IV colon cancers, as well as in colon adenomas and colon cancer cell lines.

VWA2 Antibody (N-term) - Protocols

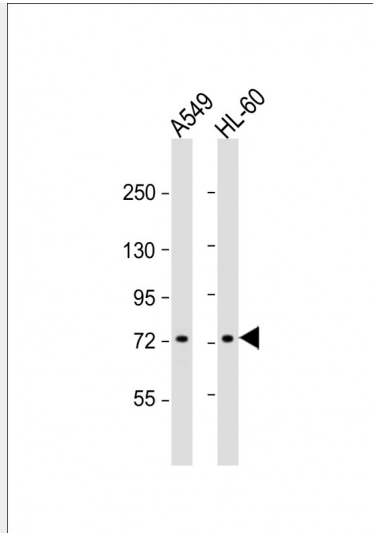
Provided below are standard protocols that you may find useful for product applications.

- [Western Blot](#)
- [Blocking Peptides](#)
- [Dot Blot](#)
- [Immunohistochemistry](#)
- [Immunofluorescence](#)
- [Immunoprecipitation](#)
- [Flow Cytometry](#)
- [Cell Culture](#)

VWA2 Antibody (N-term) - Images



VWA2 Antibody (N-term) (Cat. #AP11933a) western blot analysis in NCI-H460 cell line lysates (35ug/lane). This demonstrates the VWA2 antibody detected the VWA2 protein (arrow).



All lanes : Anti-VWA2 Antibody (N-term) at 1:1000 dilution Lane 1: A549 whole cell lysate Lane 2: HL-60 whole cell lysate Lysates/proteins at 20 μ g per lane. Secondary Goat Anti-Rabbit IgG, (H+L), Peroxidase conjugated at 1/10000 dilution. Predicted band size : 82 kDa Blocking/Dilution buffer: 5% NFDM/TBST.

VWA2 Antibody (N-term) - Background

VWA2, also named as AMACO and CCSP2, is a novel candidate serological marker of colon neoplasia. VWA2 is found in the media of various established cell lines of both fibroblast and epithelial origin.

VWA2 Antibody (N-term) - References

Gao, W., et al. Blood 112(5):1713-1719(2008)
Gebauer, J.M., et al. J. Biol. Chem. 283(26):17846-17854(2008)
Grupe, A., et al. Am. J. Hum. Genet. 78(1):78-88(2006)
Xin, B., et al. Oncogene 24(4):724-731(2005)
Eller, E., et al. Ann. N. Y. Acad. Sci. 1037, 145-149 (2004) :