

FSH-alpha Antibody (C-term)
Affinity Purified Rabbit Polyclonal Antibody (Pab)
Catalog # AP11925b

Specification

FSH-alpha Antibody (C-term) - Product Information

| | |
|-------------------|---------------------------|
| Application | WB,E |
| Primary Accession | P01215 |
| Other Accession | NP_000726 |
| Reactivity | Human |
| Host | Rabbit |
| Clonality | Polyclonal |
| Isotype | Rabbit IgG |
| Antigen Region | 74-103 |

FSH-alpha Antibody (C-term) - Additional Information

Gene ID 1081

Other Names

Glycoprotein hormones alpha chain, Anterior pituitary glycoprotein hormones common subunit alpha, Choriogonadotropin alpha chain, Chorionic gonadotrophin subunit alpha, CG-alpha, Follicle-stimulating hormone alpha chain, FSH-alpha, Follitropin alpha chain, Luteinizing hormone alpha chain, LSH-alpha, Lutropin alpha chain, Thyroid-stimulating hormone alpha chain, TSH-alpha, Thyrotropin alpha chain, CGA

Target/Specificity

This TSH-alpha antibody is generated from rabbits immunized with a KLH conjugated synthetic peptide between 74-103 amino acids from the C-terminal region of human TSH-alpha.

Dilution

WB~~1:1000

Format

Purified polyclonal antibody supplied in PBS with 0.09% (W/V) sodium azide. This antibody is purified through a protein A column, followed by peptide affinity purification.

Storage

Maintain refrigerated at 2-8°C for up to 2 weeks. For long term storage store at -20°C in small aliquots to prevent freeze-thaw cycles.

Precautions

FSH-alpha Antibody (C-term) is for research use only and not for use in diagnostic or therapeutic procedures.

FSH-alpha Antibody (C-term) - Protein Information

Name CGA

Function Shared alpha chain of the active heterodimeric glycoprotein hormones thyrotropin/thyroid stimulating hormone/TSH, lutropin/luteinizing hormone/LH, follitropin/follicle stimulating hormone/FSH and choriogonadotropin/CG. These hormones bind specific receptors on target cells that in turn activate downstream signaling pathways.

Cellular Location

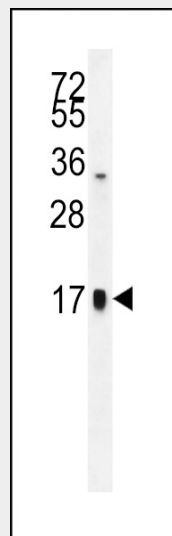
Secreted

FSH-alpha Antibody (C-term) - Protocols

Provided below are standard protocols that you may find useful for product applications.

- [Western Blot](#)
- [Blocking Peptides](#)
- [Dot Blot](#)
- [Immunohistochemistry](#)
- [Immunofluorescence](#)
- [Immunoprecipitation](#)
- [Flow Cytometry](#)
- [Cell Culture](#)

FSH-alpha Antibody (C-term) - Images



TSH-alpha Antibody (C-term) (Cat. #AP11925b) western blot analysis in HepG2 cell line lysates (35ug/lane). This demonstrates the TSH-alpha antibody detected the TSH-alpha protein (arrow).

FSH-alpha Antibody (C-term) - Background

The four human glycoprotein hormones chorionic gonadotropin (CG), luteinizing hormone (LH), follicle stimulating hormone (FSH), and thyroid stimulating hormone (TSH) are dimers consisting of alpha and beta subunits that are associated noncovalently. The alpha subunits of these hormones are identical, however, their beta chains are unique and confer biological specificity. The protein encoded by this gene is the alpha subunit and belongs to the glycoprotein hormones alpha chain family.

FSH-alpha Antibody (C-term) - References

- Canzian, F., et al. Hum. Mol. Genet. 19(19):3873-3884(2010)
Panicker, V., et al. Am. J. Hum. Genet. 87(3):430-435(2010)
Rose, J.E., et al. Mol. Med. 16 (7-8), 247-253 (2010) :
Robinson, N., et al. Clin. Lab. 56 (5-6), 197-206 (2010) :
Bjerner, J., et al. Scand. J. Clin. Lab. Invest. 69(8):873-879(2009)