

CT45A Antibody (Center)
Affinity Purified Rabbit Polyclonal Antibody (Pab)
Catalog # AP11883c

Specification

CT45A Antibody (Center) - Product Information

Application	WB,E
Primary Accession	Q8NHU0
Other Accession	Q8N7B7 , Q5DJT8 , Q5HYN5 , Q6NSH3 , NP_001017435.1
Reactivity	Human
Host	Rabbit
Clonality	Polyclonal
Isotype	Rabbit IgG
Calculated MW	21331
Antigen Region	100-129

CT45A Antibody (Center) - Additional Information

Gene ID 441519

Other Names

Cancer/testis antigen family 45 member A3, Cancer/testis antigen 45-3, Cancer/testis antigen 45A3, CT45A3, CT45-3

Target/Specificity

This CT45A antibody is generated from rabbits immunized with a KLH conjugated synthetic peptide between 100-129 amino acids from the Central region of human CT45A.

Dilution

WB~~1:1000

Format

Purified polyclonal antibody supplied in PBS with 0.09% (W/V) sodium azide. This antibody is purified through a protein A column, followed by peptide affinity purification.

Storage

Maintain refrigerated at 2-8°C for up to 2 weeks. For long term storage store at -20°C in small aliquots to prevent freeze-thaw cycles.

Precautions

CT45A Antibody (Center) is for research use only and not for use in diagnostic or therapeutic procedures.

CT45A Antibody (Center) - Protein Information

Name CT45A3 ([HGNC:33268](#))

Tissue Location

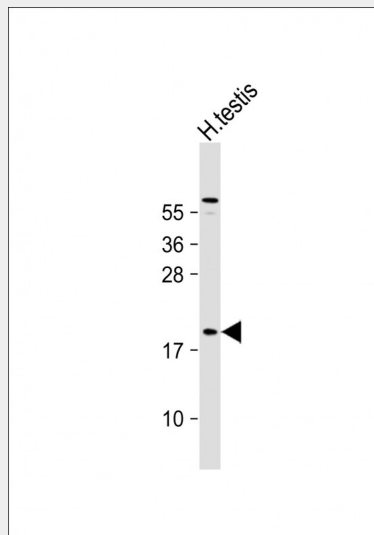
Testis specific. Expressed in cancer cell lines.

CT45A Antibody (Center) - Protocols

Provided below are standard protocols that you may find useful for product applications.

- [Western Blot](#)
- [Blocking Peptides](#)
- [Dot Blot](#)
- [Immunohistochemistry](#)
- [Immunofluorescence](#)
- [Immunoprecipitation](#)
- [Flow Cytometry](#)
- [Cell Culture](#)

CT45A Antibody (Center) - Images



Anti-CT45A3 Antibody (Center) at 1:1000 dilution + human testis lysate Lysates/proteins at 20 μ g per lane. Secondary Goat Anti-Rabbit IgG, (H+L), Peroxidase conjugated at 1/10000 dilution. Predicted band size : 21 kDa Blocking/Dilution buffer: 5% NFDN/TBST.

CT45A Antibody (Center) - Background

The function of this protein remains unknown.

CT45A Antibody (Center) - References

- Lamesch, P., et al. Genomics 89(3):307-315(2007)
Chen, Y.T., et al. Proc. Natl. Acad. Sci. U.S.A. 102(22):7940-7945(2005)