

**SOCS4 Antibody (Center)**  
**Affinity Purified Rabbit Polyclonal Antibody (Pab)**  
**Catalog # AP11847c**

**Specification**

---

**SOCS4 Antibody (Center) - Product Information**

Application	IF, WB, IHC-P,E
Primary Accession	<a href="#">O8WXH5</a>
Other Accession	<a href="#">NP_955453.1</a> , <a href="#">NP_543143.1</a>
Reactivity	Human
Host	Rabbit
Clonality	Polyclonal
Isotype	Rabbit IgG
Calculated MW	50623
Antigen Region	227-254

**SOCS4 Antibody (Center) - Additional Information**

**Gene ID** 122809

**Other Names**

Suppressor of cytokine signaling 4, SOCS-4, Suppressor of cytokine signaling 7, SOCS-7, SOCS4, SOCS7

**Target/Specificity**

This SOCS4 antibody is generated from rabbits immunized with a KLH conjugated synthetic peptide between 227-254 amino acids from the Central region of human SOCS4.

**Dilution**

IF~~1:10~50  
WB~~1:1000  
IHC-P~~1:10~50

**Format**

Purified polyclonal antibody supplied in PBS with 0.09% (W/V) sodium azide. This antibody is purified through a protein A column, followed by peptide affinity purification.

**Storage**

Maintain refrigerated at 2-8°C for up to 2 weeks. For long term storage store at -20°C in small aliquots to prevent freeze-thaw cycles.

**Precautions**

SOCS4 Antibody (Center) is for research use only and not for use in diagnostic or therapeutic procedures.

**SOCS4 Antibody (Center) - Protein Information**

**Name** SOCS4

## Synonyms SOCS7

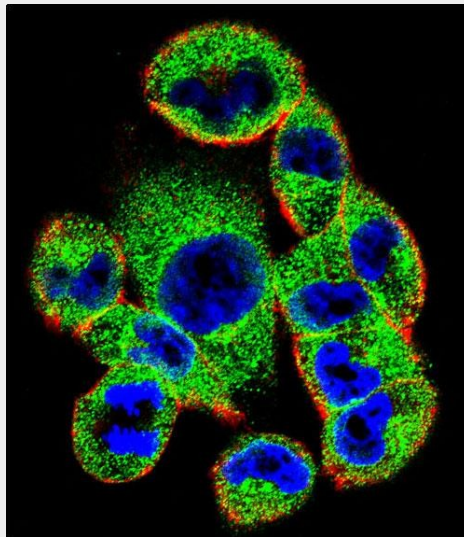
**Function** SOCS family proteins form part of a classical negative feedback system that regulates cytokine signal transduction. Substrate- recognition component of a SCF-like ECS (Elongin BC-CUL2/5-SOCS-box protein) E3 ubiquitin-protein ligase complex which mediates the ubiquitination and subsequent proteasomal degradation of target proteins. Inhibits EGF signaling by mediating the degradation of the Tyr-phosphorylated EGF receptor/EGFR.

## SOCS4 Antibody (Center) - Protocols

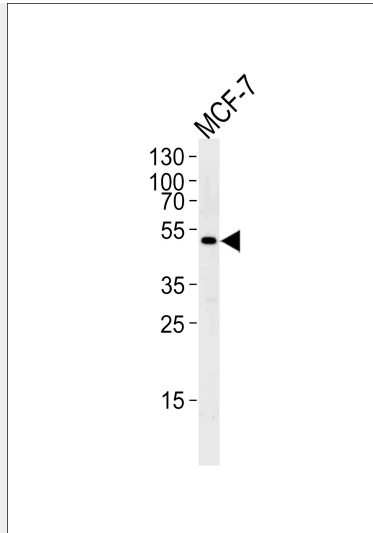
Provided below are standard protocols that you may find useful for product applications.

- [Western Blot](#)
- [Blocking Peptides](#)
- [Dot Blot](#)
- [Immunohistochemistry](#)
- [Immunofluorescence](#)
- [Immunoprecipitation](#)
- [Flow Cytometry](#)
- [Cell Culture](#)

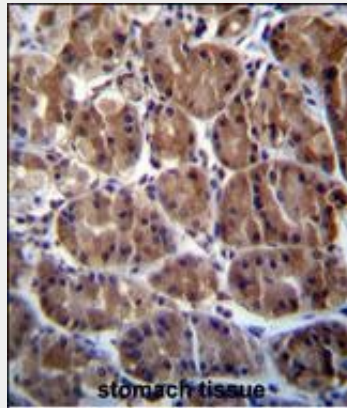
## SOCS4 Antibody (Center) - Images



Confocal immunofluorescent analysis of SOCS4 Antibody (Center)(Cat#AP11847c) with A2058 cell followed by Alexa Fluor 488-conjugated goat anti-rabbit IgG (green). Actin filaments have been labeled with Alexa Fluor 555 phalloidin (red).DAPI was used to stain the cell nuclear (blue).



Western blot analysis of lysate from MCF-7 cell line, using SOCS4 Antibody (Center) (Cat. #AP11847c). AP11847c was diluted at 1:1000 at each lane. A goat anti-rabbit IgG H&L (HRP) at 1:5000 dilution was used as the secondary antibody. Lysate at 35ug per lane.



SOCS4 Antibody (Center) (Cat. #AP11847c) immunohistochemistry analysis in formalin fixed and paraffin embedded human stomach tissue followed by peroxidase conjugation of the secondary antibody and DAB staining. This data demonstrates the use of SOCS4 Antibody (Center) for immunohistochemistry. Clinical relevance has not been evaluated.

### **SOCS4 Antibody (Center) - Background**

The protein encoded by this gene contains a SH2 domain and a SOCS BOX domain. The protein thus belongs to the suppressor of cytokine signaling (SOCS), also known as STAT-induced STAT inhibitor (SSI), protein family. SOCS family members are known to be cytokine-inducible negative regulators of cytokine signaling. Two alternatively spliced transcript variants encoding the same protein have been found for this gene.

### **SOCS4 Antibody (Center) - References**

- Hu, G., et al. J. Infect. Dis. 202(1):125-135(2010)
- Han, S., et al. Hum. Immunol. 71(7):727-730(2010)
- Rajaraman, P., et al. Cancer Epidemiol. Biomarkers Prev. 19(5):1356-1361(2010)
- Sasi, W., et al. BMC Cancer 10, 178 (2010) :
- Rajaraman, P., et al. Cancer Epidemiol. Biomarkers Prev. 18(5):1651-1658(2009)