

**PDE1B Antibody (C-term)**  
**Affinity Purified Rabbit Polyclonal Antibody (Pab)**  
**Catalog # AP11846b**

**Specification**

---

**PDE1B Antibody (C-term) - Product Information**

Application	WB, IHC-P,E
Primary Accession	<a href="#">Q01064</a>
Other Accession	<a href="#">NP_000915.1</a> , <a href="#">NP_001159447.1</a>
Reactivity	Human, Mouse
Host	Rabbit
Clonality	Polyclonal
Isotype	Rabbit IgG
Calculated MW	61380
Antigen Region	473-500

**PDE1B Antibody (C-term) - Additional Information**

**Gene ID** 5153

**Other Names**

Calcium/calmodulin-dependent 3', 5'-cyclic nucleotide phosphodiesterase 1B, Cam-PDE 1B, 63 kDa  
Cam-PDE, PDE1B, PDE1B1, PDES1B

**Target/Specificity**

This PDE1B antibody is generated from rabbits immunized with a KLH conjugated synthetic peptide between 473-500 amino acids from the C-terminal region of human PDE1B.

**Dilution**

WB~~1:1000  
IHC-P~~1:10~50

**Format**

Purified polyclonal antibody supplied in PBS with 0.09% (W/V) sodium azide. This antibody is purified through a protein A column, followed by peptide affinity purification.

**Storage**

Maintain refrigerated at 2-8°C for up to 2 weeks. For long term storage store at -20°C in small aliquots to prevent freeze-thaw cycles.

**Precautions**

PDE1B Antibody (C-term) is for research use only and not for use in diagnostic or therapeutic procedures.

**PDE1B Antibody (C-term) - Protein Information**

**Name** PDE1B ([HGNC:8775](#))

**Synonyms** PDES1B

**Function** Cyclic nucleotide phosphodiesterase with a dual specificity for the second messengers cAMP and cGMP, which are key regulators of many important physiological processes (PubMed:[15260978](#), PubMed:[8855339](#), PubMed:[9419816](#)). Has a preference for cGMP as a substrate (PubMed:[9419816](#)).

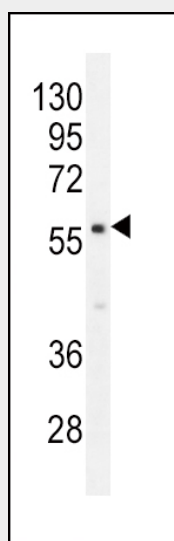
**Cellular Location**

Cytoplasm, cytosol.

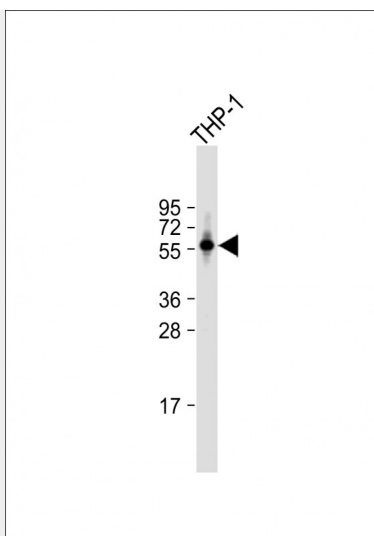
**PDE1B Antibody (C-term) - Protocols**

Provided below are standard protocols that you may find useful for product applications.

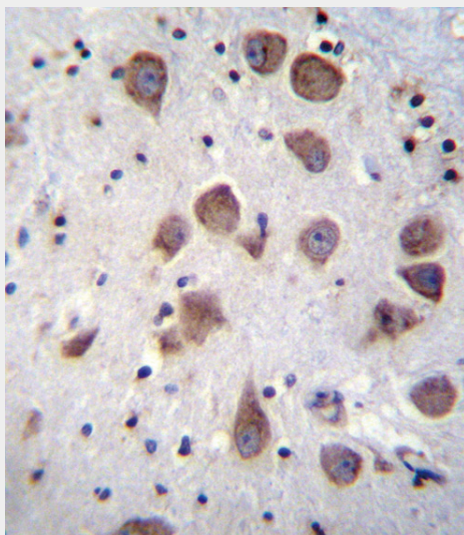
- [Western Blot](#)
- [Blocking Peptides](#)
- [Dot Blot](#)
- [Immunohistochemistry](#)
- [Immunofluorescence](#)
- [Immunoprecipitation](#)
- [Flow Cytometry](#)
- [Cell Culture](#)

**PDE1B Antibody (C-term) - Images**

PDE1B Antibody (C-term) (Cat. #AP11846b) western blot analysis in mouse brain tissue lysates (35ug/lane). This demonstrates the PDE1B antibody detected the PDE1B protein (arrow).



Anti-PDE1B Antibody (C-term) at 1:1000 dilution + THP-1 whole cell lysate Lysates/proteins at 20 µg per lane. Secondary Goat Anti-Rabbit IgG, (H+L), Peroxidase conjugated at 1/10000 dilution. Predicted band size : 61 kDa Blocking/Dilution buffer: 5% NFDM/TBST.



PDE1B Antibody (C-term) (Cat. #AP11846b) immunohistochemistry analysis in formalin fixed and paraffin embedded human brain tissue followed by peroxidase conjugation of the secondary antibody and DAB staining. This data demonstrates the use of PDE1B Antibody (C-term) for immunohistochemistry. Clinical relevance has not been evaluated.

#### **PDE1B Antibody (C-term) - Background**

Cyclic nucleotide phosphodiesterases (PDEs) catalyze hydrolysis of the cyclic nucleotides cAMP and cGMP to the corresponding nucleoside 5-prime-monophosphates. Mammalian PDEs have been classified into several families based on their biochemical properties. Members of the PDE1 family, such as PDE1B, are calmodulin (see MIM 114180)-dependent PDEs (CaM-PDEs) that are stimulated by a calcium-calmodulin complex (Repaske et al., 1992 [PubMed 1326532]).

#### **PDE1B Antibody (C-term) - References**

Bailey, S.D., et al. Diabetes Care 33(10):2250-2253(2010)  
Talmud, P.J., et al. Am. J. Hum. Genet. 85(5):628-642(2009)  
Vandeput, F., et al. J. Biol. Chem. 282(45):32749-32757(2007)  
Bender, A.T., et al. Proc. Natl. Acad. Sci. U.S.A. 103(2):460-465(2006)  
Bender, A.T., et al. Proc. Natl. Acad. Sci. U.S.A. 102(2):497-502(2005)