

CTGE4 Antibody (N-term)
Affinity Purified Rabbit Polyclonal Antibody (Pab)
Catalog # AP11836a

Specification

CTGE4 Antibody (N-term) - Product Information

Application	WB,E
Primary Accession	Q8IX94
Other Accession	A4D2H0 , A4FU28 , POCG41 , Q86UF2 , NP_940897.2
Reactivity	Human
Host	Rabbit
Clonality	Polyclonal
Isotype	Rabbit IgG
Calculated MW	87989
Antigen Region	86-114

CTGE4 Antibody (N-term) - Additional Information

Gene ID 100128553;100142659

Other Names

cTAGE family member 4, Protein cTAGE-4, CTAGE4

Target/Specificity

This CTGE4 antibody is generated from rabbits immunized with a KLH conjugated synthetic peptide between 86-114 amino acids from the N-terminal region of human CTGE4.

Dilution

WB~~1:1000

Format

Purified polyclonal antibody supplied in PBS with 0.09% (W/V) sodium azide. This antibody is purified through a protein A column, followed by peptide affinity purification.

Storage

Maintain refrigerated at 2-8°C for up to 2 weeks. For long term storage store at -20°C in small aliquots to prevent freeze-thaw cycles.

Precautions

CTGE4 Antibody (N-term) is for research use only and not for use in diagnostic or therapeutic procedures.

CTGE4 Antibody (N-term) - Protein Information

Name CTAGE4

Function Tumor-associated antigen.

Cellular Location

Membrane; Single-pass membrane protein

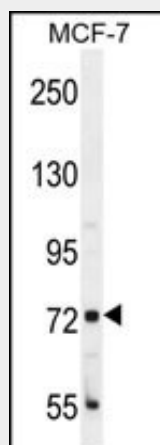
Tissue Location

Expressed in testis, placenta and skin. Expressed at lower level in mammary gland and stomach

CTGE4 Antibody (N-term) - Protocols

Provided below are standard protocols that you may find useful for product applications.

- [Western Blot](#)
- [Blocking Peptides](#)
- [Dot Blot](#)
- [Immunohistochemistry](#)
- [Immunofluorescence](#)
- [Immunoprecipitation](#)
- [Flow Cytometry](#)
- [Cell Culture](#)

CTGE4 Antibody (N-term) - Images

CTGE4 Antibody (N-term) (Cat. #AP11836a) western blot analysis in MCF-7 cell line lysates (35ug/lane). This demonstrates the CTGE4 antibody detected the CTGE4 protein (arrow).

CTGE4 Antibody (N-term) - Background

Tumor-associated antigen.

CTGE4 Antibody (N-term) - References

Usener, D., et al. J. Invest. Dermatol. 121(1):198-206(2003)
Eichmuller, S., et al. Proc. Natl. Acad. Sci. U.S.A. 98(2):629-634(2001)