

eNos Antibody (S1177)
Affinity Purified Rabbit Polyclonal Antibody (Pab)
Catalog # AP11828a

Specification

eNos Antibody (S1177) - Product Information

Application	IF, WB, FC,E
Primary Accession	P29474
Other Accession	Q62600 , Q28969 , P70313 , P29473 , NP_001153582.1 , NP_000594.2 , NP_001153581.1 , P79209
Reactivity	Human
Predicted	Bovine, Mouse, Pig, Rat, Sheep
Host	Rabbit
Clonality	Polyclonal
Isotype	Rabbit IgG
Antigen Region	1156-1183

eNos Antibody (S1177) - Additional Information

Gene ID 4846

Other Names

Nitric oxide synthase, endothelial, Constitutive NOS, cNOS, EC-NOS, Endothelial NOS, eNOS, NOS type III, NOSIII, NOS3

Target/Specificity

This eNos antibody is generated from rabbits immunized with a KLH conjugated synthetic peptide between 1156-1183 amino acids from human eNos.

Dilution

IF~~1:10~50
WB~~1:1000
FC~~1:10~50

Format

Purified polyclonal antibody supplied in PBS with 0.09% (W/V) sodium azide. This antibody is purified through a protein A column, followed by peptide affinity purification.

Storage

Maintain refrigerated at 2-8°C for up to 2 weeks. For long term storage store at -20°C in small aliquots to prevent freeze-thaw cycles.

Precautions

eNos Antibody (S1177) is for research use only and not for use in diagnostic or therapeutic procedures.

eNos Antibody (S1177) - Protein Information

Name NOS3 ([HGNC:7876](#))

Function Produces nitric oxide (NO) which is implicated in vascular smooth muscle relaxation through a cGMP-mediated signal transduction pathway (PubMed:[1378832](#)). NO mediates vascular endothelial growth factor (VEGF)-induced angiogenesis in coronary vessels and promotes blood clotting through the activation of platelets.

Cellular Location

Cell membrane. Membrane, caveola. Cytoplasm, cytoskeleton. Golgi apparatus. Note=Specifically associates with actin cytoskeleton in the G2 phase of the cell cycle; which is favored by interaction with NOSIP and results in a reduced enzymatic activity

Tissue Location

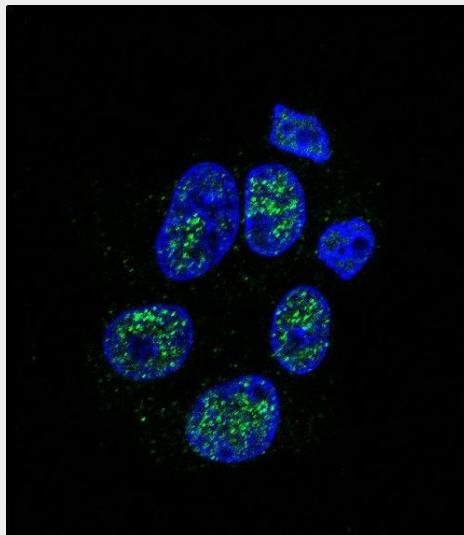
Platelets, placenta, liver and kidney.

eNos Antibody (S1177) - Protocols

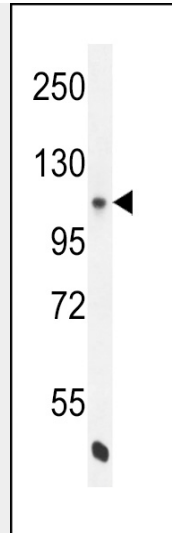
Provided below are standard protocols that you may find useful for product applications.

- [Western Blot](#)
- [Blocking Peptides](#)
- [Dot Blot](#)
- [Immunohistochemistry](#)
- [Immunofluorescence](#)
- [Immunoprecipitation](#)
- [Flow Cytometry](#)
- [Cell Culture](#)

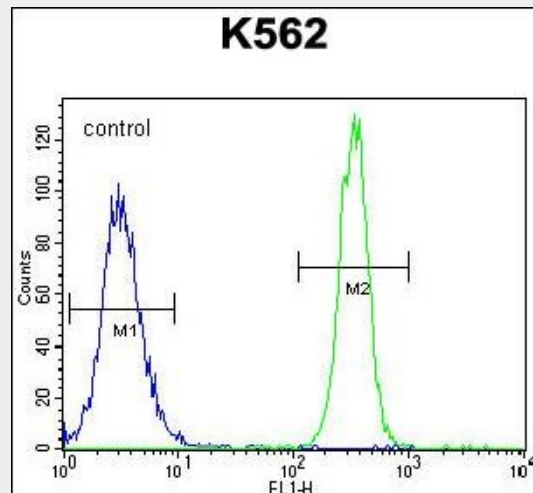
eNos Antibody (S1177) - Images



Confocal immunofluorescent analysis of eNos Antibody (S1177)(Cat#AP11828a) with HepG2 cell followed by Alexa Fluor 488-conjugated goat anti-rabbit IgG (green).DAPI was used to stain the cell nuclear (blue).



eNos Antibody (S1177) (Cat. #AP11828a) western blot analysis in K562 cell line lysates (35ug/lane). This demonstrates the eNos antibody detected the eNos protein (arrow).



eNos Antibody (S1177) (Cat. #AP11828a) flow cytometric analysis of K562 cells (right histogram) compared to a negative control cell (left histogram). FITC-conjugated goat-anti-rabbit secondary antibodies were used for the analysis.

eNos Antibody (S1177) - Background

Nitric oxide is a reactive free radical which acts as a biologic mediator in several processes, including neurotransmission and antimicrobial and antitumoral activities. Nitric oxide is synthesized from L-arginine by nitric oxide synthases. Variations in this gene are associated with susceptibility to coronary spasm. Multiple transcript variants encoding different isoforms have been found for this gene.

eNos Antibody (S1177) - References

- Yanamandra, K., et al. Ophthalmic Genet. 31(4):173-177(2010)
- Bambha, K., et al. Mayo Clin. Proc. 85(9):814-820(2010)
- Shin, S.J., et al. Eur. J. Obstet. Gynecol. Reprod. Biol. 152(1):64-67(2010)
- Kim, S.M., et al. Kardiol Pol 68(8):920-926(2010)
- Dafni, C., et al. BMC Med. Genet. 11, 133 (2010) :

eNos Antibody (S1177) - Citations

- [Cilostazol Induces eNOS and TM Expression via Activation with Sirtuin 1/Krüppel-like Factor 2 Pathway in Endothelial Cells](#)
- [KLF2 regulates eNOS uncoupling via Nrf2/HO-1 in endothelial cells under hypoxia and reoxygenation.](#)
- [The anti-inflammatory effect and potential mechanism of cardamonin in DSS-induced colitis.](#)
- [Activation of Krüppel-Like Factor 2 with Ginkgo Biloba Extract Induces eNOS Expression and Increases NO Production in Cultured Human Umbilical Endothelial Cells.](#)