

**SPACA5 Antibody (Center)**  
**Affinity Purified Rabbit Polyclonal Antibody (Pab)**  
**Catalog # AP11801c**

**Specification**

---

**SPACA5 Antibody (Center) - Product Information**

Application	<b>WB, IHC-P,E</b>
Primary Accession	<a href="#">O96QH8</a>
Other Accession	<a href="#">NP_995328.2</a> , <a href="#">NP_001073369.1</a>
Reactivity	<b>Mouse</b>
Host	<b>Rabbit</b>
Clonality	<b>Polyclonal</b>
Isotype	<b>Rabbit IgG</b>
Calculated MW	<b>17896</b>
Antigen Region	<b>40-69</b>

**SPACA5 Antibody (Center) - Additional Information**

**Gene ID** 389852;729201

**Other Names**

Sperm acrosome-associated protein 5, Lysozyme-like protein 5, Sperm-specific lysozyme-like protein X, SLLP-X, SPACA5, LYZL5, SPACA5A

**Target/Specificity**

This SPACA5 antibody is generated from rabbits immunized with a KLH conjugated synthetic peptide between 40-69 amino acids from the Central region of human SPACA5.

**Dilution**

WB~~1:1000  
IHC-P~~1:50~100

**Format**

Purified polyclonal antibody supplied in PBS with 0.09% (W/V) sodium azide. This antibody is purified through a protein A column, followed by peptide affinity purification.

**Storage**

Maintain refrigerated at 2-8°C for up to 2 weeks. For long term storage store at -20°C in small aliquots to prevent freeze-thaw cycles.

**Precautions**

SPACA5 Antibody (Center) is for research use only and not for use in diagnostic or therapeutic procedures.

**SPACA5 Antibody (Center) - Protein Information**

**Name** SPACA5

**Synonyms** LYZL5, SPACA5A

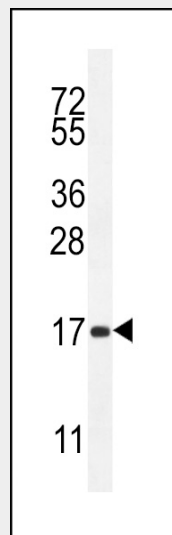
**Cellular Location**  
Secreted.

### SPACA5 Antibody (Center) - Protocols

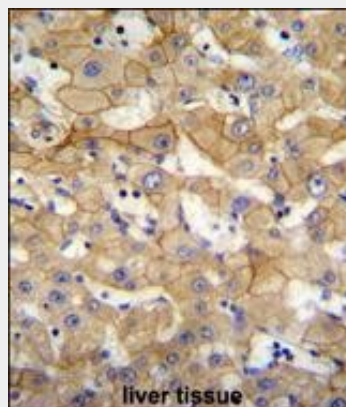
Provided below are standard protocols that you may find useful for product applications.

- [Western Blot](#)
- [Blocking Peptides](#)
- [Dot Blot](#)
- [Immunohistochemistry](#)
- [Immunofluorescence](#)
- [Immunoprecipitation](#)
- [Flow Cytometry](#)
- [Cell Culture](#)

### SPACA5 Antibody (Center) - Images



SPACA5 Antibody (Center) (Cat. #AP11801c) western blot analysis in mouse heart tissue lysates (35ug/lane). This demonstrates the SPACA5 antibody detected the SPACA5 protein (arrow).



SPACA5 Antibody (Center) (Cat. #AP11801c) immunohistochemistry analysis in formalin fixed and

paraffin embedded human liver tissue followed by peroxidase conjugation of the secondary antibody and DAB staining. This data demonstrates the use of SPACA5 Antibody (Center) for immunohistochemistry. Clinical relevance has not been evaluated.

**SPACA5 Antibody (Center) - References**

Chen, Y.T., et al. Genes Chromosomes Cancer 45(4):392-400(2006)

Clark, H.F., et al. Genome Res. 13(10):2265-2270(2003)