

SHISA3 Antibody (C-term)
Affinity Purified Rabbit Polyclonal Antibody (Pab)
Catalog # AP11797b

Specification

SHISA3 Antibody (C-term) - Product Information

Application	WB, IHC-P,E
Primary Accession	AOPJX4
Other Accession	NP_001073974.1
Reactivity	Mouse
Host	Rabbit
Clonality	Polyclonal
Isotype	Rabbit IgG
Calculated MW	25832
Antigen Region	158-186

SHISA3 Antibody (C-term) - Additional Information

Gene ID 152573

Other Names

Protein shisa-3 homolog, SHISA3

Target/Specificity

This SHISA3 antibody is generated from rabbits immunized with a KLH conjugated synthetic peptide between 158-186 amino acids from the C-terminal region of human SHISA3.

Dilution

WB~~1:1000
IHC-P~~1:50~100

Format

Purified polyclonal antibody supplied in PBS with 0.09% (W/V) sodium azide. This antibody is purified through a protein A column, followed by peptide affinity purification.

Storage

Maintain refrigerated at 2-8°C for up to 2 weeks. For long term storage store at -20°C in small aliquots to prevent freeze-thaw cycles.

Precautions

SHISA3 Antibody (C-term) is for research use only and not for use in diagnostic or therapeutic procedures.

SHISA3 Antibody (C-term) - Protein Information

Name SHISA3

Function Plays an essential role in the maturation of presomitic mesoderm cells by individual

attenuation of both FGF and WNT signaling.

Cellular Location

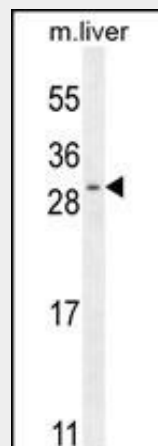
Endoplasmic reticulum membrane {ECO:0000250, ECO:0000250|UniProtKB:Q7T0Z7}; Single-pass type I membrane protein {ECO:0000250|UniProtKB:Q7T0Z7}

SHISA3 Antibody (C-term) - Protocols

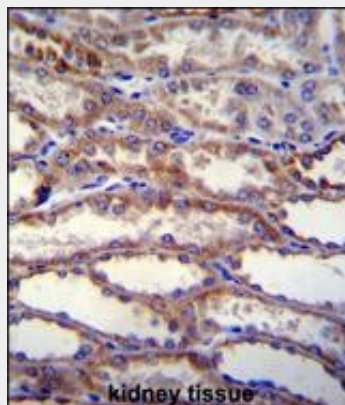
Provided below are standard protocols that you may find useful for product applications.

- [Western Blot](#)
- [Blocking Peptides](#)
- [Dot Blot](#)
- [Immunohistochemistry](#)
- [Immunofluorescence](#)
- [Immunoprecipitation](#)
- [Flow Cytometry](#)
- [Cell Culture](#)

SHISA3 Antibody (C-term) - Images



SHISA3 Antibody (C-term) (Cat. #AP11797b) western blot analysis in mouse liver tissue lysates (35ug/lane). This demonstrates the SHISA3 antibody detected the SHISA3 protein (arrow).



SHISA3 Antibody (C-term) (Cat. #AP11797b) immunohistochemistry analysis in formalin fixed and paraffin embedded human kidney tissue followed by peroxidase conjugation of the secondary

antibody and DAB staining. This data demonstrates the use of SHISA3 Antibody (C-term) for immunohistochemistry. Clinical relevance has not been evaluated.

SHISA3 Antibody (C-term) - Background

SHISA3 plays an essential role in the maturation of presomitic mesoderm cells by individual attenuation of both FGF and WNT signaling (By similarity).

SHISA3 Antibody (C-term) - References

Furushima, K., et al. Dev. Biol. 306(2):480-492(2007)