

**TBB1 Antibody (N-term)**  
**Affinity Purified Rabbit Polyclonal Antibody (Pab)**  
**Catalog # AP11781a**

**Specification**

---

**TBB1 Antibody (N-term) - Product Information**

Application	<b>WB, IHC-P,E</b>
Primary Accession	<a href="#">O9H4B7</a>
Other Accession	<a href="#">NP_110400.1</a>
Reactivity	<b>Human</b>
Host	<b>Rabbit</b>
Clonality	<b>Polyclonal</b>
Isotype	<b>Rabbit IgG</b>
Calculated MW	<b>50327</b>
Antigen Region	<b>4-31</b>

**TBB1 Antibody (N-term) - Additional Information**

**Gene ID** 81027

**Other Names**

Tubulin beta-1 chain, TUBB1

**Target/Specificity**

This TBB1 antibody is generated from rabbits immunized with a KLH conjugated synthetic peptide between 4-31 amino acids from the N-terminal region of human TBB1.

**Dilution**

WB~~1:1000  
IHC-P~~1:50~100

**Format**

Purified polyclonal antibody supplied in PBS with 0.09% (W/V) sodium azide. This antibody is purified through a protein A column, followed by peptide affinity purification.

**Storage**

Maintain refrigerated at 2-8°C for up to 2 weeks. For long term storage store at -20°C in small aliquots to prevent freeze-thaw cycles.

**Precautions**

TBB1 Antibody (N-term) is for research use only and not for use in diagnostic or therapeutic procedures.

**TBB1 Antibody (N-term) - Protein Information**

**Name** TUBB1

**Function** Tubulin is the major constituent of microtubules, a cylinder consisting of laterally

associated linear protofilaments composed of alpha- and beta-tubulin heterodimers. Microtubules grow by the addition of GTP-tubulin dimers to the microtubule end, where a stabilizing cap forms. Below the cap, tubulin dimers are in GDP-bound state, owing to GTPase activity of alpha-tubulin.

**Cellular Location**

Cytoplasm, cytoskeleton

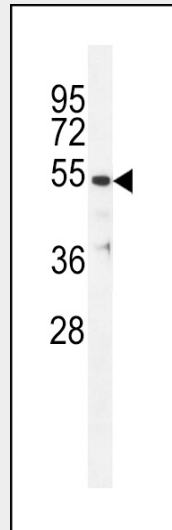
**Tissue Location**

Hematopoietic cell-specific. Major isotype in leukocytes, where it represents 50% of all beta-tubulins

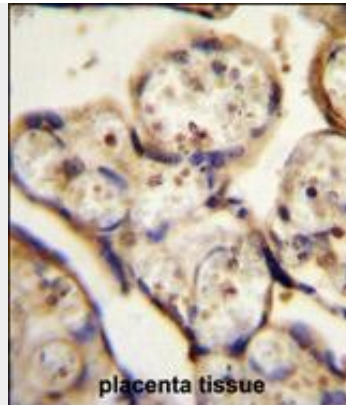
**TBB1 Antibody (N-term) - Protocols**

Provided below are standard protocols that you may find useful for product applications.

- [Western Blot](#)
- [Blocking Peptides](#)
- [Dot Blot](#)
- [Immunohistochemistry](#)
- [Immunofluorescence](#)
- [Immunoprecipitation](#)
- [Flow Cytometry](#)
- [Cell Culture](#)

**TBB1 Antibody (N-term) - Images**

TBB1 Antibody (N-term) (Cat. #AP11781a) western blot analysis in ZR-75-1 cell line lysates (35ug/lane). This demonstrates the TBB1 antibody detected the TBB1 protein (arrow).



TBB1 Antibody (N-term) (Cat. #AP11781a) immunohistochemistry analysis in formalin fixed and paraffin embedded human placenta tissue followed by peroxidase conjugation of the secondary antibody and DAB staining. This data demonstrates the use of TBB1 Antibody (N-term) for immunohistochemistry. Clinical relevance has not been evaluated.

### **TBB1 Antibody (N-term) - Background**

This gene encodes a member of the beta tubulin protein family. Beta tubulins are one of two core protein families (alpha and beta tubulins) that heterodimerize and assemble to form microtubules. This protein is specifically expressed in platelets and megakaryocytes and may be involved in proplatelet production and platelet release. A mutations in this gene is associated with autosomal dominant macrothrombocytopenia. Two pseudogenes of this gene are found on chromosome Y.

### **TBB1 Antibody (N-term) - References**

- Anton, A.I., et al. *Ann. Hematol.* 89(11):1147-1154(2010)
- Yin, S., et al. *Mol. Cancer Ther.* 9(2):327-335(2010)
- Xu, W., et al. *Mol. Cancer Ther.* 8(12):3318-3330(2009)
- Joe, P.A., et al. *J. Biol. Chem.* 284(7):4283-4291(2009)
- Navarro-Nunez, L., et al. *Thromb. Haemost.* 100(6):1211-1213(2008)