

**SOX1 Antibody (N-term)**  
**Purified Rabbit Polyclonal Antibody (Pab)**  
**Catalog # AP11764a**

**Specification**

---

**SOX1 Antibody (N-term) - Product Information**

Application	<b>WB, FC,E</b>
Primary Accession	<a href="#">O00570</a>
Other Accession	<a href="#">O9DDD7</a> , <a href="#">P47792</a> , <a href="#">O6EJB7</a> , <a href="#">P48433</a> , <a href="#">O5FWM3</a> , <a href="#">P55863</a> , <a href="#">O42569</a> , <a href="#">P48432</a> , <a href="#">P48431</a> , <a href="#">O6P0E1</a> , <a href="#">P48430</a> , <a href="#">O2PG84</a> , <a href="#">P53783</a> , <a href="#">O57401</a> , <a href="#">O2Z1R2</a> , <a href="#">O6DGL6</a> , <a href="#">B0ZTE2</a> , <a href="#">O04892</a> , <a href="#">P61259</a> , <a href="#">O95416</a> , <a href="#">O32PP9</a> , <a href="#">O9W7R6</a> , <a href="#">NP_005977.2</a> , <a href="#">P54231</a>
Reactivity	<b>Human</b>
Predicted	<b>Chicken, Zebrafish, Monkey, Mouse, Xenopus, Sheep</b>
Host	<b>Rabbit</b>
Clonality	<b>Polyclonal</b>
Isotype	<b>Rabbit IgG</b>
Calculated MW	<b>39023</b>
Antigen Region	<b>47-76</b>

**SOX1 Antibody (N-term) - Additional Information**

**Gene ID** 6656

**Other Names**

Transcription factor SOX-1, SOX1

**Target/Specificity**

This SOX1 antibody is generated from rabbits immunized with a KLH conjugated synthetic peptide between 47-76 amino acids from the N-terminal region of human SOX1.

**Dilution**

WB~~1:1000

FC~~1:10~50

**Format**

Purified polyclonal antibody supplied in PBS with 0.09% (W/V) sodium azide. This antibody is prepared by Saturated Ammonium Sulfate (SAS) precipitation followed by dialysis against PBS.

**Storage**

Maintain refrigerated at 2-8°C for up to 2 weeks. For long term storage store at -20°C in small aliquots to prevent freeze-thaw cycles.

**Precautions**

SOX1 Antibody (N-term) is for research use only and not for use in diagnostic or therapeutic procedures.

## SOX1 Antibody (N-term) - Protein Information

**Name** SOX1

**Function** Transcriptional activator. May function as a switch in neuronal development. Keeps neural cells undifferentiated by counteracting the activity of proneural proteins and suppresses neuronal differentiation (By similarity).

**Cellular Location**

Nucleus.

**Tissue Location**

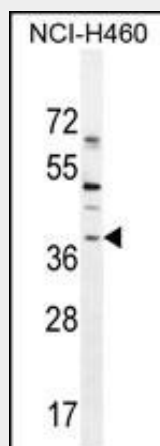
Mainly expressed in the developing central nervous system

## SOX1 Antibody (N-term) - Protocols

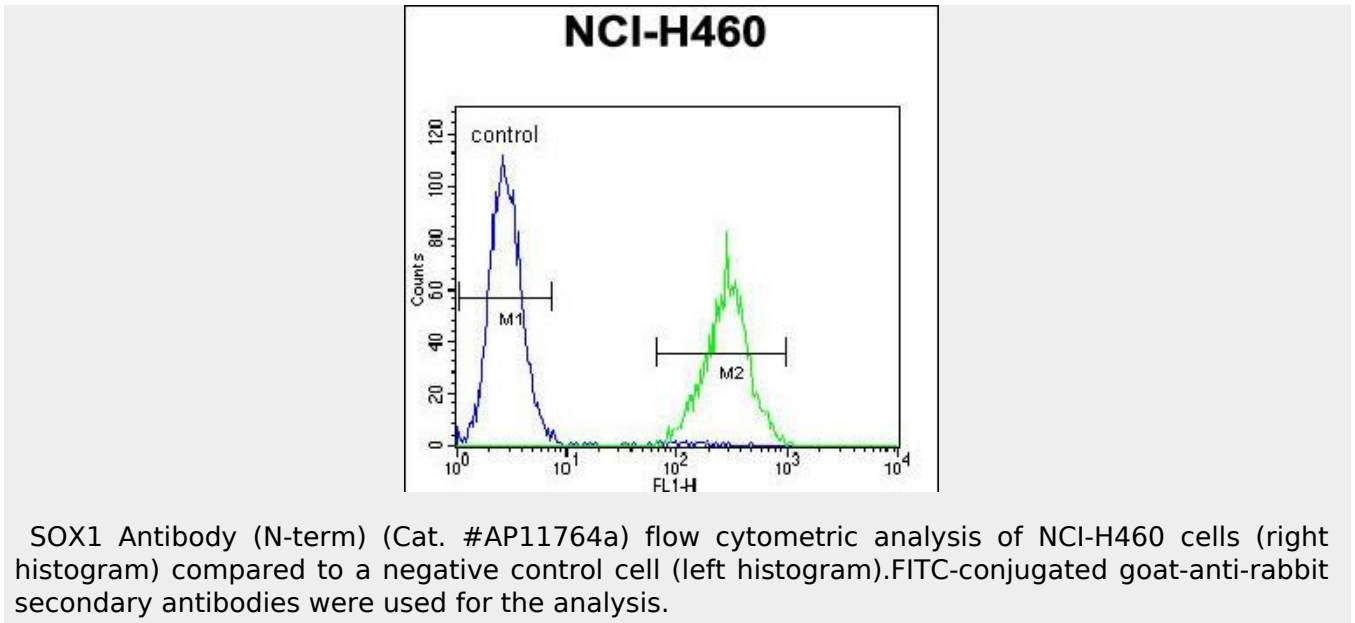
Provided below are standard protocols that you may find useful for product applications.

- [Western Blot](#)
- [Blocking Peptides](#)
- [Dot Blot](#)
- [Immunohistochemistry](#)
- [Immunofluorescence](#)
- [Immunoprecipitation](#)
- [Flow Cytometry](#)
- [Cell Culture](#)

## SOX1 Antibody (N-term) - Images



SOX1 Antibody (N-term) (Cat. #AP11764a) western blot analysis in NCI-H460 cell line lysates (35ug/lane). This demonstrates the SOX1 antibody detected the SOX1 protein (arrow).



### **SOX1 Antibody (N-term) - Background**

This intronless gene encodes a member of the SOX (SRY-related HMG-box) family of transcription factors involved in the regulation of embryonic development and in the determination of the cell fate. The encoded protein may act as a transcriptional activator after forming a protein complex with other proteins. In mice, a similar protein regulates the gamma-crystallin genes and is essential for lens development.

### **SOX1 Antibody (N-term) - References**

Panayi, H., et al. J. Neurosci. 30(37):12274-12280(2010)  
Phi, J.H., et al. J Neurosurg Pediatr 5(6):608-614(2010)  
Jugessur, A., et al. PLoS ONE 5 (7), E11493 (2010) :  
Titulaer, M.J., et al. J. Clin. Oncol. 27(26):4260-4267(2009)  
Stolk, L., et al. Nat. Genet. 41(6):645-647(2009)