

**CCDC110 Antibody (C-term)**  
**Affinity Purified Rabbit Polyclonal Antibody (Pab)**  
**Catalog # AP11757b**

**Specification**

---

**CCDC110 Antibody (C-term) - Product Information**

Application	WB, IHC-P,E
Primary Accession	<a href="#">Q8TBZ0</a>
Other Accession	<a href="#">NP_001138883.1</a> , <a href="#">NP_689988.1</a>
Reactivity	Mouse
Host	Rabbit
Clonality	Polyclonal
Isotype	Rabbit IgG
Calculated MW	96726
Antigen Region	777-806

**CCDC110 Antibody (C-term) - Additional Information**

**Gene ID** 256309

**Other Names**

Coiled-coil domain-containing protein 110, Cancer/testis antigen 52, CT52, Cancer/testis antigen KM-HN-1, CCDC110, KMHN1

**Target/Specificity**

This CCDC110 antibody is generated from rabbits immunized with a KLH conjugated synthetic peptide between 777-806 amino acids from the C-terminal region of human CCDC110.

**Dilution**

WB~~1:1000  
IHC-P~~1:10~50

**Format**

Purified polyclonal antibody supplied in PBS with 0.09% (W/V) sodium azide. This antibody is purified through a protein A column, followed by peptide affinity purification.

**Storage**

Maintain refrigerated at 2-8°C for up to 2 weeks. For long term storage store at -20°C in small aliquots to prevent freeze-thaw cycles.

**Precautions**

CCDC110 Antibody (C-term) is for research use only and not for use in diagnostic or therapeutic procedures.

**CCDC110 Antibody (C-term) - Protein Information**

**Name** CCDC110

## Synonyms KMHN1

## Cellular Location

Nucleus.

## Tissue Location

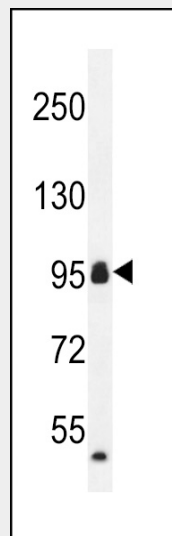
Expressed specifically in testis. Also expressed in tumors of different origins.

## CCDC110 Antibody (C-term) - Protocols

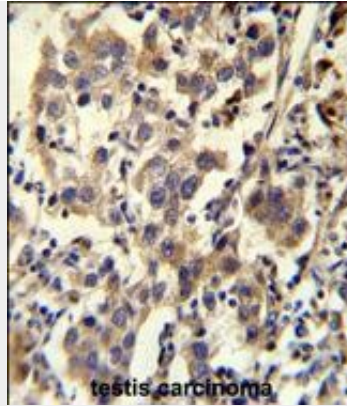
Provided below are standard protocols that you may find useful for product applications.

- [Western Blot](#)
- [Blocking Peptides](#)
- [Dot Blot](#)
- [Immunohistochemistry](#)
- [Immunofluorescence](#)
- [Immunoprecipitation](#)
- [Flow Cytometry](#)
- [Cell Culture](#)

## CCDC110 Antibody (C-term) - Images



CCDC110 Antibody (C-term) (Cat. #AP11757b) western blot analysis in mouse heart tissue lysates (35ug/lane). This demonstrates the CCDC110 antibody detected the CCDC110 protein (arrow).



CCDC110 Antibody (C-term) (Cat. #AP11757b) immunohistochemistry analysis in formalin fixed and paraffin embedded human testis carcinoma followed by peroxidase conjugation of the secondary antibody and DAB staining. This data demonstrates the use of CCDC110 Antibody (C-term) for immunohistochemistry. Clinical relevance has not been evaluated.

#### **CCDC110 Antibody (C-term) - References**

Monji, M., et al. Clin. Cancer Res. 10 (18 PT 1), 6047-6057 (2004) :