

**SRD5A2L2 Antibody (C-term)**  
**Affinity Purified Rabbit Polyclonal Antibody (Pab)**  
**Catalog # AP11735b**

**Specification**

---

**SRD5A2L2 Antibody (C-term) - Product Information**

Application	WB, FC,E
Primary Accession	<a href="#">Q5HYJ1</a>
Other Accession	<a href="#">NP_001010874.2</a>
Reactivity	Human
Host	Rabbit
Clonality	Polyclonal
Isotype	Rabbit IgG
Calculated MW	42009
Antigen Region	325-354

**SRD5A2L2 Antibody (C-term) - Additional Information**

**Gene ID** 253017

**Other Names**

Trans-2, 3-enoyl-CoA reductase-like, 131-, Steroid 5-alpha-reductase 2-like 2 protein, TECRL, SRD5A2L2

**Target/Specificity**

This SRD5A2L2 antibody is generated from rabbits immunized with a KLH conjugated synthetic peptide between 325-354 amino acids from the C-terminal region of human SRD5A2L2.

**Dilution**

WB~~1:1000  
FC~~1:10~50

**Format**

Purified polyclonal antibody supplied in PBS with 0.09% (W/V) sodium azide. This antibody is purified through a protein A column, followed by peptide affinity purification.

**Storage**

Maintain refrigerated at 2-8°C for up to 2 weeks. For long term storage store at -20°C in small aliquots to prevent freeze-thaw cycles.

**Precautions**

SRD5A2L2 Antibody (C-term) is for research use only and not for use in diagnostic or therapeutic procedures.

**SRD5A2L2 Antibody (C-term) - Protein Information**

**Name** TECRL

## Synonyms SRD5A2L2

### Cellular Location

Membrane; Multi-pass membrane protein. Endoplasmic reticulum

### Tissue Location

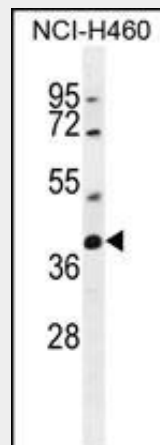
Predominantly expressed in the heart and skeletal muscle.

## SRD5A2L2 Antibody (C-term) - Protocols

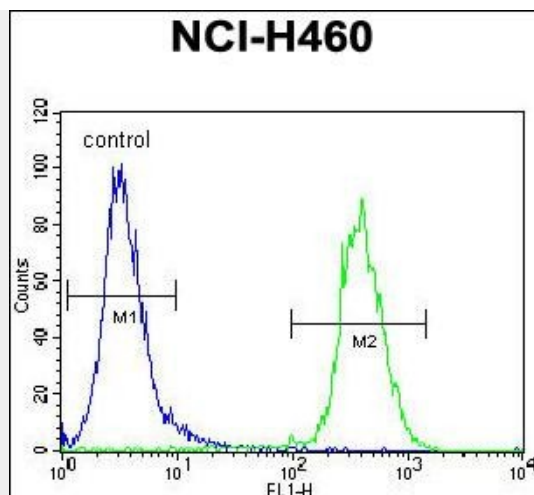
Provided below are standard protocols that you may find useful for product applications.

- [Western Blot](#)
- [Blocking Peptides](#)
- [Dot Blot](#)
- [Immunohistochemistry](#)
- [Immunofluorescence](#)
- [Immunoprecipitation](#)
- [Flow Cytometry](#)
- [Cell Culture](#)

## SRD5A2L2 Antibody (C-term) - Images



SRD5A2L2 Antibody (C-term) (Cat. #AP11735b) western blot analysis in NCI-H460 cell line lysates (35ug/lane). This demonstrates the SRD5A2L2 antibody detected the SRD5A2L2 protein (arrow).



SRD5A2L2 Antibody (C-term) (Cat. #AP11735b) flow cytometric analysis of NCI-H460 cells (right histogram) compared to a negative control cell (left histogram). FITC-conjugated goat-anti-rabbit secondary antibodies were used for the analysis.

#### **SRD5A2L2 Antibody (C-term) - References**

- Bailey, S.D., et al. Diabetes Care 33(10):2250-2253(2010)  
Rose, J.E., et al. Mol. Med. 16 (7-8), 247-253 (2010) :  
Talmud, P.J., et al. Am. J. Hum. Genet. 85(5):628-642(2009)