

**PCDHB10 Antibody (C-term)**  
**Affinity Purified Rabbit Polyclonal Antibody (Pab)**  
**Catalog # AP11699b**

**Specification**

---

**PCDHB10 Antibody (C-term) - Product Information**

Application	WB, FC,E
Primary Accession	<a href="#">O9UN67</a>
Other Accession	<a href="#">NP_061753.1</a>
Reactivity	Human
Host	Rabbit
Clonality	Polyclonal
Isotype	Rabbit IgG
Calculated MW	87621
Antigen Region	766-794

**PCDHB10 Antibody (C-term) - Additional Information**

**Gene ID** 56126

**Other Names**

Protocadherin beta-10, PCDH-beta-10, PCDHB10

**Target/Specificity**

This PCDHB10 antibody is generated from rabbits immunized with a KLH conjugated synthetic peptide between 766-794 amino acids from the C-terminal region of human PCDHB10.

**Dilution**

WB~~1:1000

FC~~1:10~50

**Format**

Purified polyclonal antibody supplied in PBS with 0.09% (W/V) sodium azide. This antibody is purified through a protein A column, followed by peptide affinity purification.

**Storage**

Maintain refrigerated at 2-8°C for up to 2 weeks. For long term storage store at -20°C in small aliquots to prevent freeze-thaw cycles.

**Precautions**

PCDHB10 Antibody (C-term) is for research use only and not for use in diagnostic or therapeutic procedures.

**PCDHB10 Antibody (C-term) - Protein Information**

**Name** PCDHB10

**Function** Potential calcium-dependent cell-adhesion protein. May be involved in the

establishment and maintenance of specific neuronal connections in the brain.

### Cellular Location

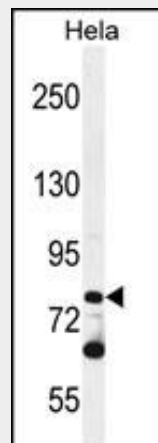
Cell membrane; Single-pass type I membrane protein

### PCDHB10 Antibody (C-term) - Protocols

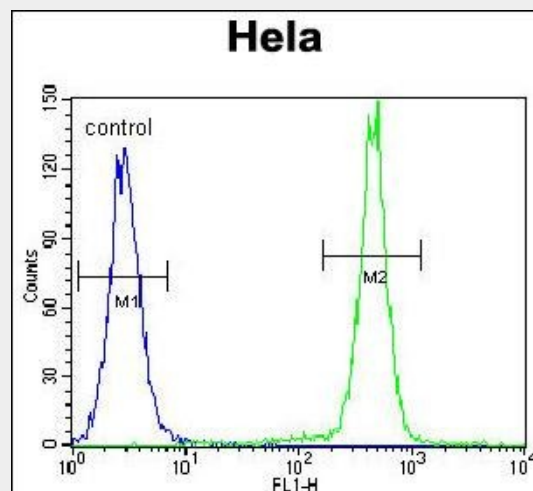
Provided below are standard protocols that you may find useful for product applications.

- [Western Blot](#)
- [Blocking Peptides](#)
- [Dot Blot](#)
- [Immunohistochemistry](#)
- [Immunofluorescence](#)
- [Immunoprecipitation](#)
- [Flow Cytometry](#)
- [Cell Culture](#)

### PCDHB10 Antibody (C-term) - Images



PCDHB10 Antibody (C-term) (Cat. #AP11699b) western blot analysis in HeLa cell line lysates (35ug/lane). This demonstrates the PCDHB10 antibody detected the PCDHB10 protein (arrow).



PCDHB10 Antibody (C-term) (Cat. #AP11699b) flow cytometric analysis of HeLa cells (right

histogram) compared to a negative control cell (left histogram).FITC-conjugated goat-anti-rabbit secondary antibodies were used for the analysis.

### **PCDHB10 Antibody (C-term) - Background**

This gene is a member of the protocadherin beta gene cluster, one of three related gene clusters tandemly linked on chromosome five. The gene clusters demonstrate an unusual genomic organization similar to that of B-cell and T-cell receptor gene clusters. The beta cluster contains 16 genes and 3 pseudogenes, each encoding 6 extracellular cadherin domains and a cytoplasmic tail that deviates from others in the cadherin superfamily. The extracellular domains interact in a homophilic manner to specify differential cell-cell connections. Unlike the alpha and gamma clusters, the transcripts from these genes are made up of only one large exon, not sharing common 3' exons as expected. These neural cadherin-like cell adhesion proteins are integral plasma membrane proteins. Their specific functions are unknown but they most likely play a critical role in the establishment and function of specific cell-cell neural connections.

### **PCDHB10 Antibody (C-term) - References**

Zhang, Z., et al. Protein Sci. 13(10):2819-2824(2004)  
Clark, H.F., et al. Genome Res. 13(10):2265-2270(2003)  
Frank, M., et al. Curr. Opin. Cell Biol. 14(5):557-562(2002)  
Vanhalst, K., et al. FEBS Lett. 495 (1-2), 120-125 (2001) :  
Wu, Q., et al. Genome Res. 11(3):389-404(2001)